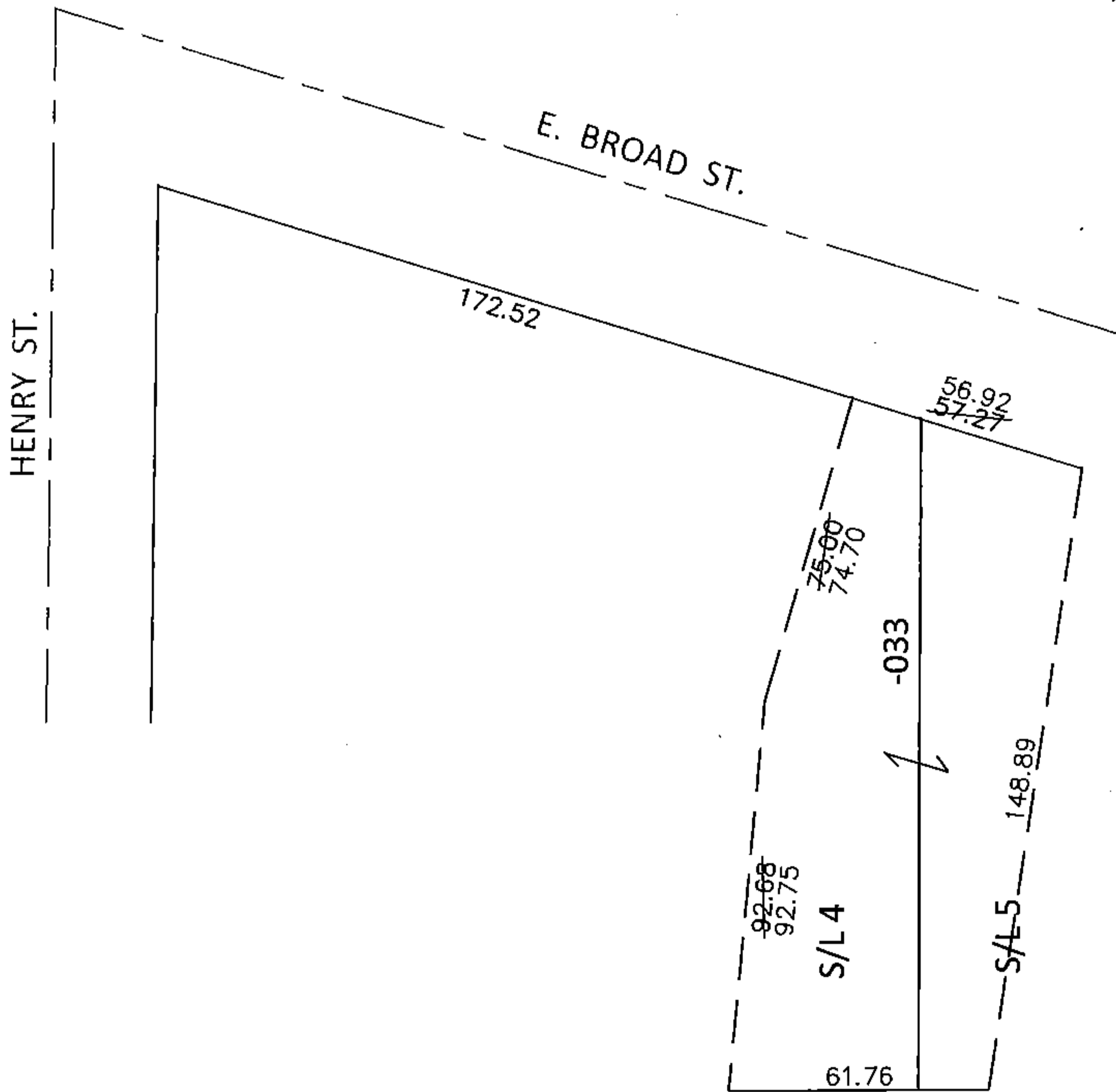
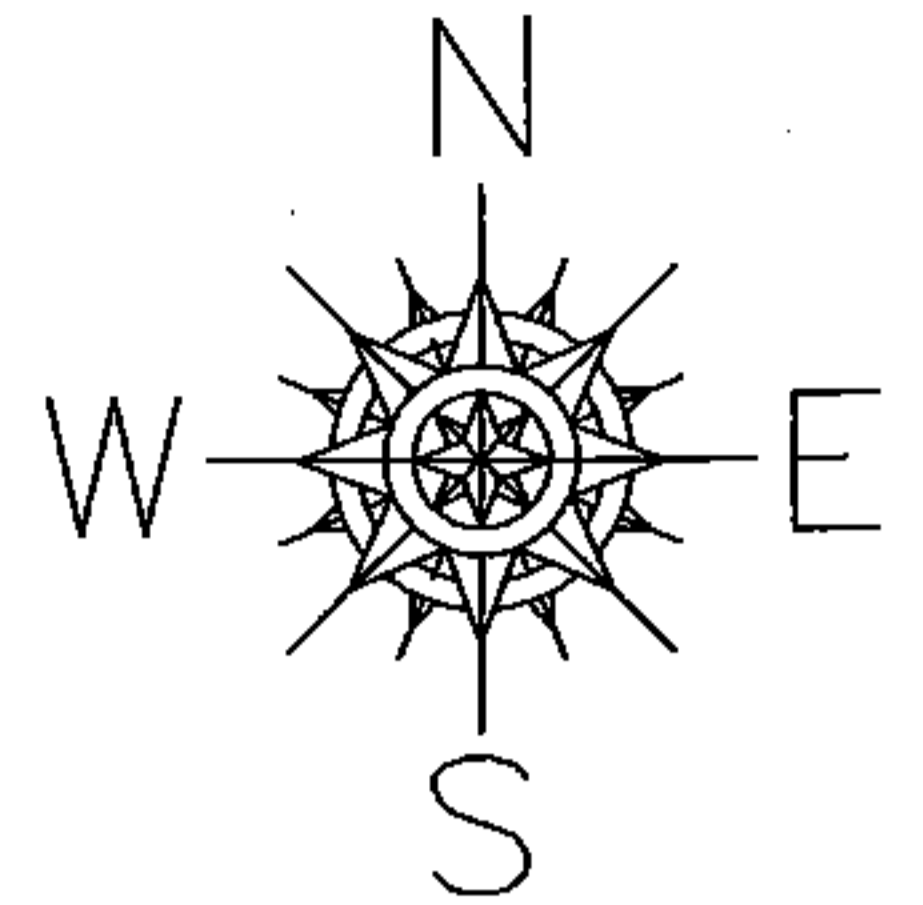


PARENT PARCEL: 06-25-006-108-033

CHILD PARCEL:

STARTING POINT: INTERSECTION OF SOUTH LINE OF E. BROAD ST. AND EAST LINE OF HENRY ST.

15-03307-D



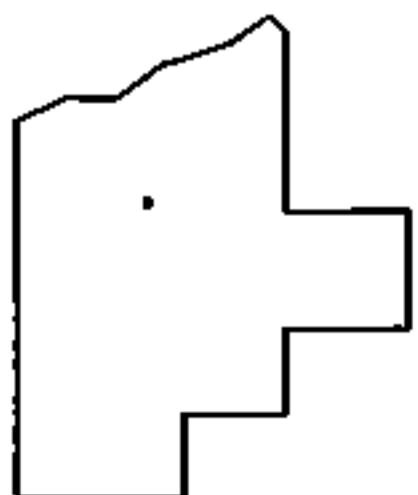
FRONTAGE & DEPTH CORRECTION

06-25-006-108-033

56.92 X 167.45

~~57.27 X 167.68~~

CORRECTION PER SURVEY BY SCOTT A. ENGLAND



SPLITS/DEEDS PROCESSED

LORAIN COUNTY TAX MAP DEPARTMENT
226 MIDDLE AVE. ELYRIA, OHIO

SURVEYED BY: SCOTT A. ENGLAND

CLOSURE: .01:10,000

MAP PAGE(S): 6-123

APPROVED BY: RRM DATE: 9-30-15

SCALE: 1"= 50' PRIOR INST.: 19980519795