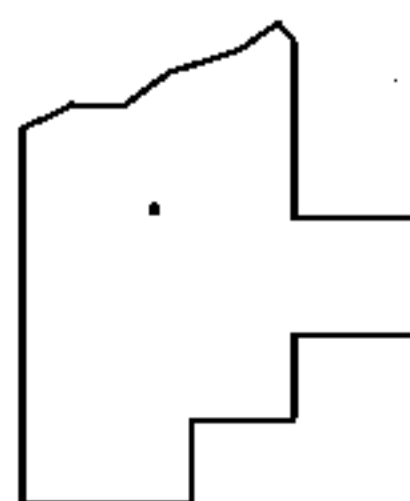
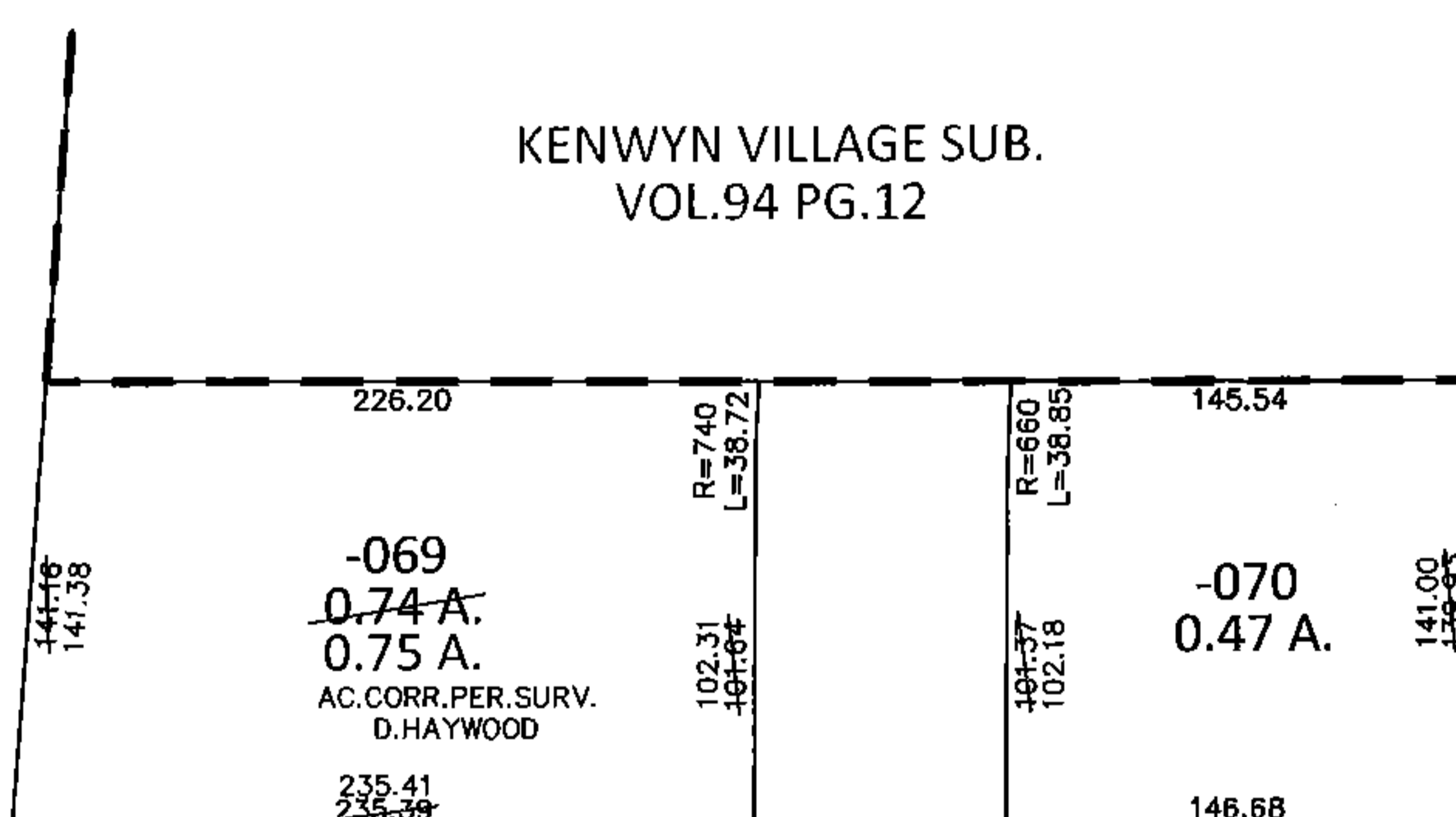
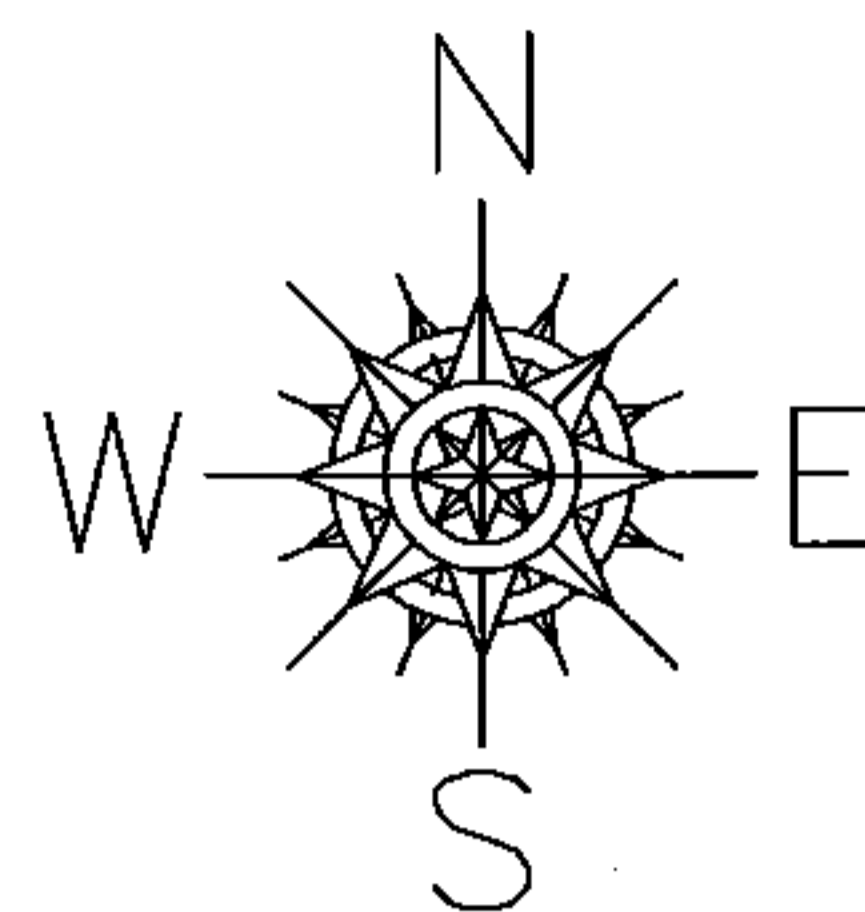


PARENT PARCEL: 04-00-003-103-069, -070

CHILD PARCEL: _____

STARTING POINT: SOUTHEAST CORNER OF S/L 8 IN KENWYN VILLAGE SUB. (VOL.94 PG.12)

15-03305-D



SPLITS/DEEDS PROCESSED

LORAIN COUNTY TAX MAP DEPARTMENT
226 MIDDLE AVE. ELYRIA, OHIO

SURVEYED BY: DALE R. HAYWOOD
 CLOSURE: .01:10,000
 MAP PAGE(S): 4-00-003-H
 APPROVED BY: RRM DATE: 9-29-15
 SCALE: 1"= 100 PRIOR INST.: 20150530767