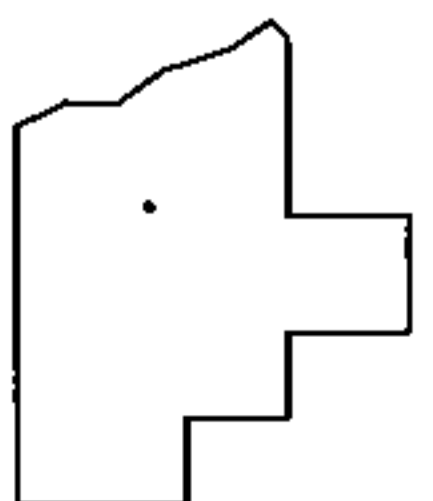
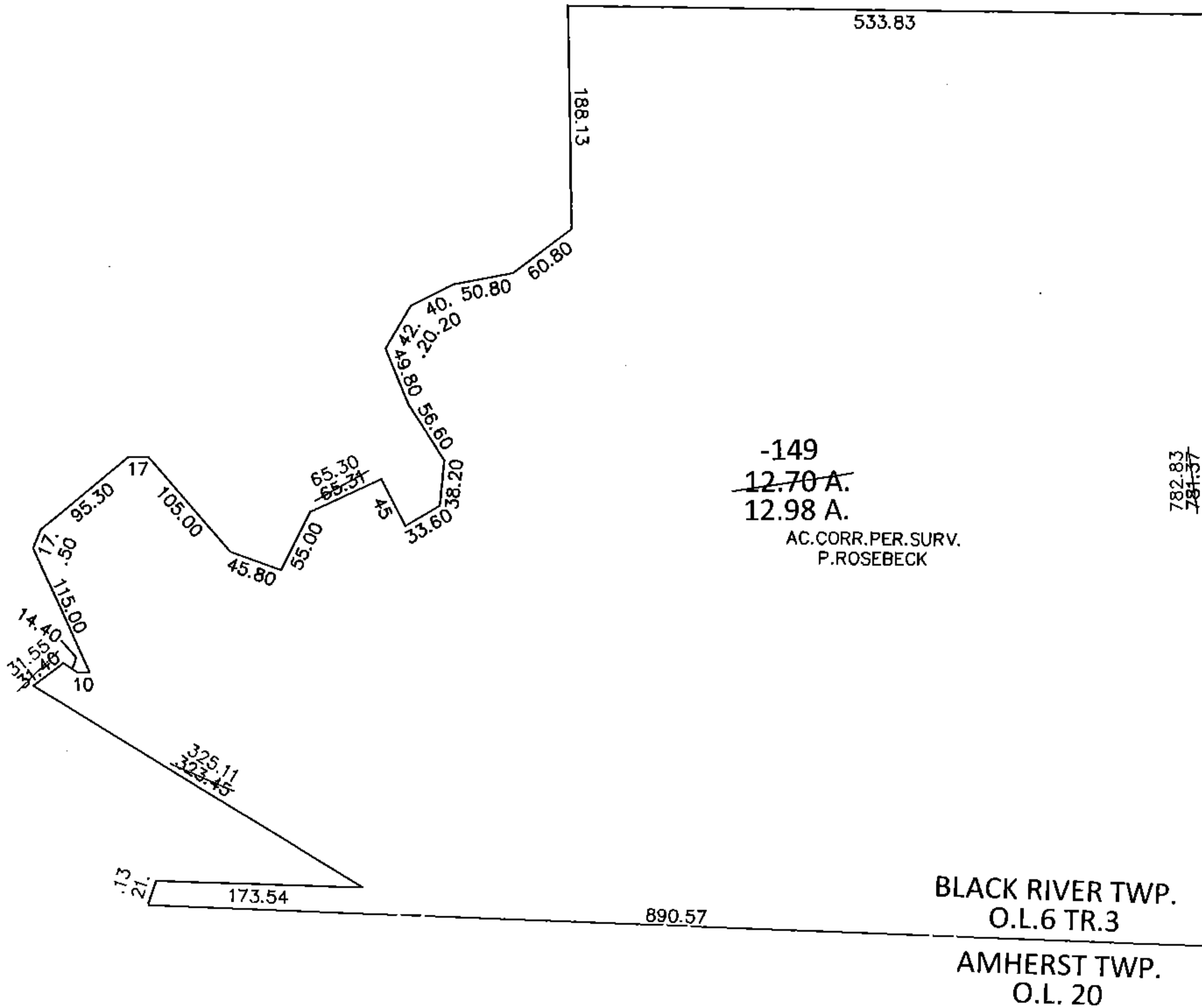
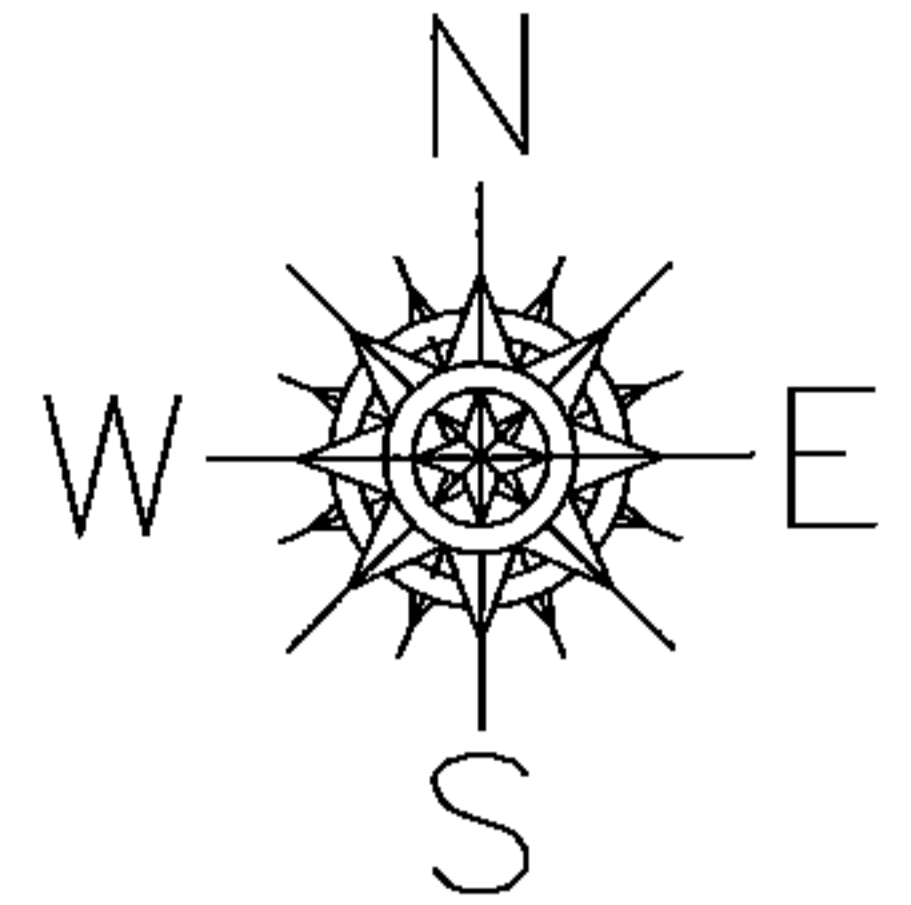


PARENT PARCEL: 02-03-006-104-149

CHILD PARCEL: _____

STARTING POINT: SOUTHEAST CORNER OF O.L.6 TR.3

15-03304-A



SPLITS/DEEDS PROCESSED

LORAIN COUNTY TAX MAP DEPARTMENT
226 MIDDLE AVE. ELYRIA, OHIO

SURVEYED BY: PHILLIP A. ROSEBECK

CLOSURE: .01:10,000

MAP PAGE(S): 2-03-006-B

APPROVED BY: RRM DATE: 9-28-15

SCALE: 1"= 150 PRIOR INST.: OR 1390/472