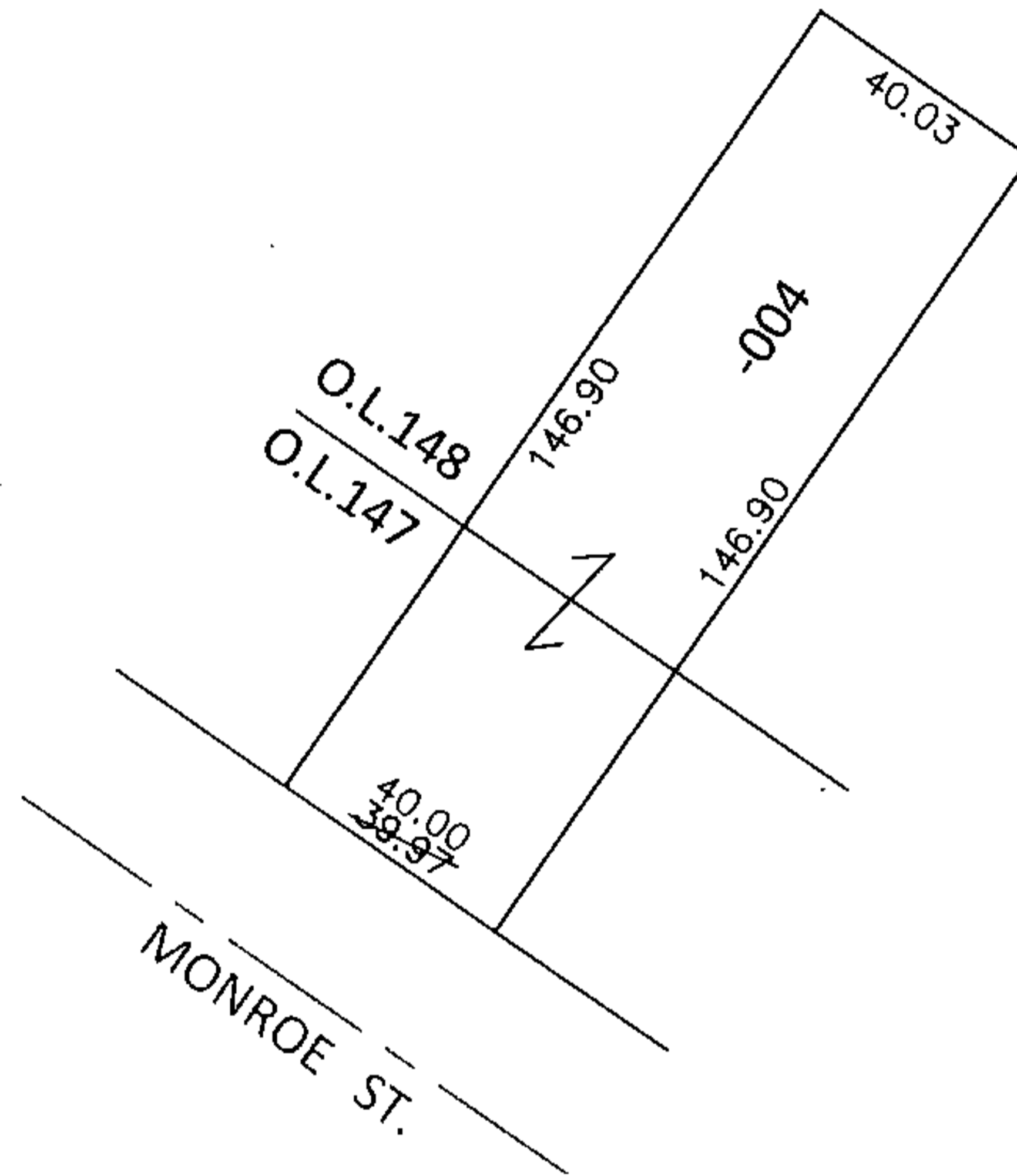
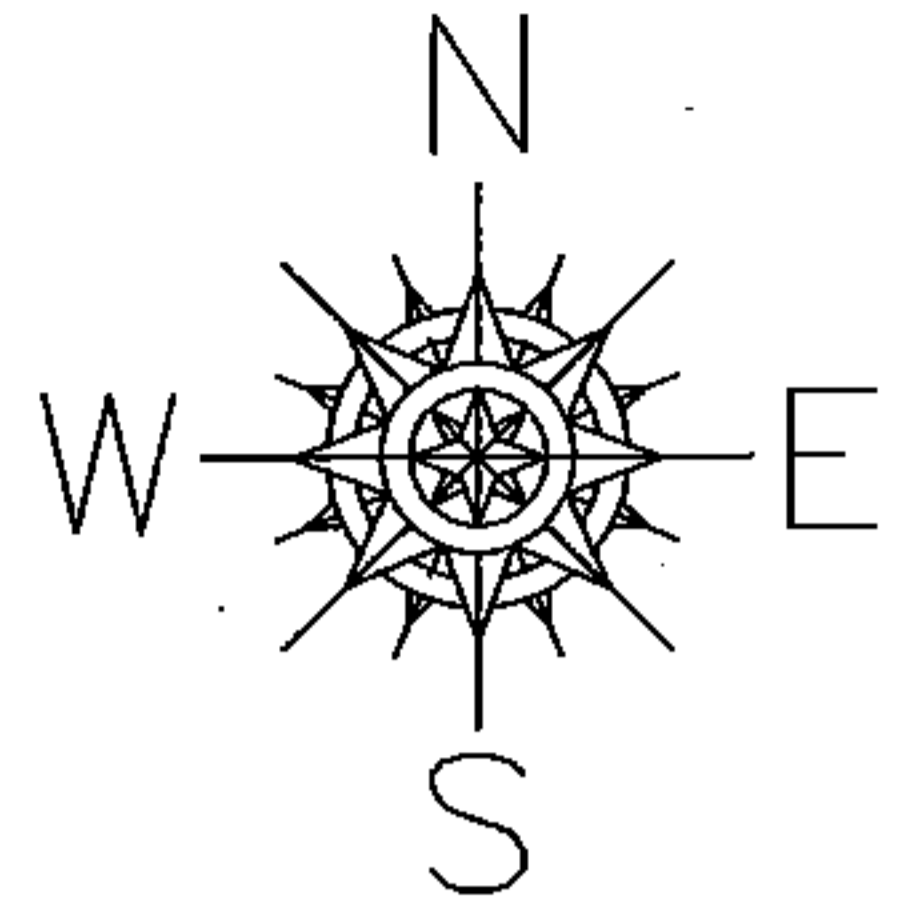


PARENT PARCEL: 06-24-148-000-004

CHILD PARCEL: _____

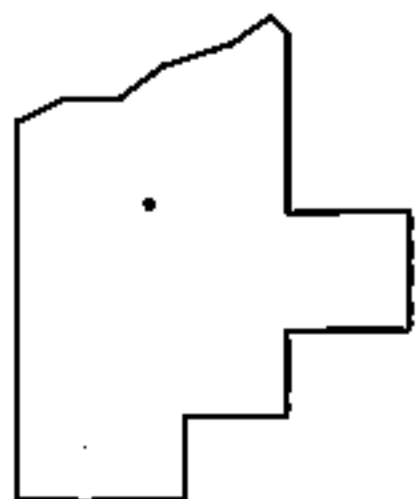
STARTING POINT: MOST WESTERLY CORNER OF LAND CONVEYED TO ADAM C. & ALICE OPFER (DV 157/39)

15-03302-X



FRONTAGE & DEPTH CORRECTION

06-24-148-000-004
40 X 146.90
~~39.97 X 147~~
CORR. PER PRIOR DEEDS



SPLITS/DEEDS PROCESSED

LORAIN COUNTY TAX MAP DEPARTMENT
226 MIDDLE AVE. ELYRIA, OHIO

SURVEYED BY: N/A

CLOSURE: N/A

MAP PAGE(S): 6-100

APPROVED BY: RRM DATE: 9-24-15

SCALE: 1"= 50' PRIOR INST.: 20100336092