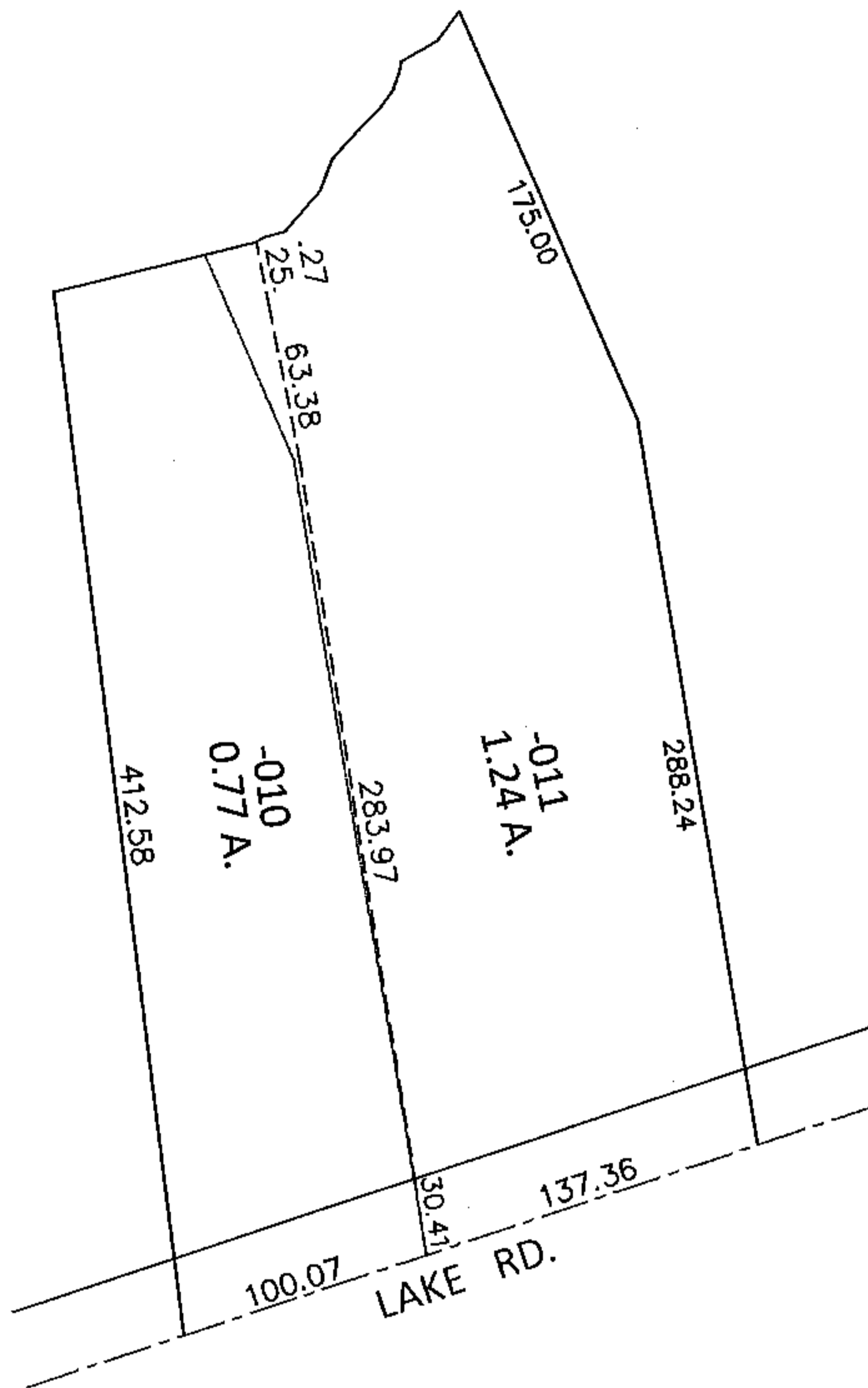
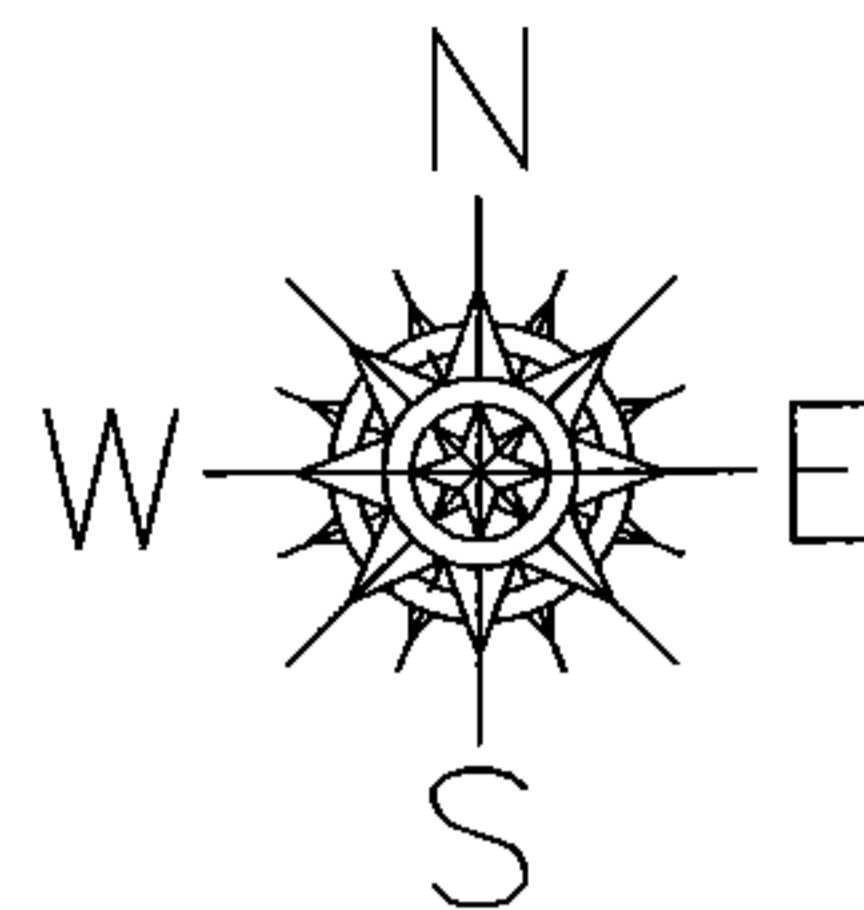


PARENT PARCEL: 04-00-006-101-010, -011

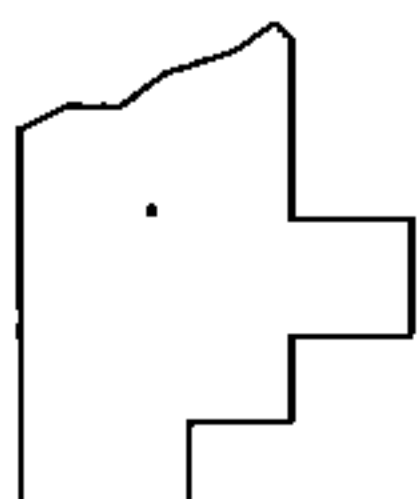
CHILD PARCEL: \_\_\_\_\_

STARTING POINT: \_\_\_\_\_

15-03298-C



MAP CORRECTION ONLY  
BOUNDARY LINE AGREEMENT



SPLITS/DEEDS PROCESSED

LORAIN COUNTY TAX MAP DEPARTMENT  
226 MIDDLE AVE. ELYRIA, OHIO

SURVEYED BY: DALE R. HAYWOOD

CLOSURE: N/A

MAP PAGE(S): 4-00-006-A

APPROVED BY: RRM DATE: 9-21-15

SCALE: 1"= 100 PRIOR INST.: 20150559817