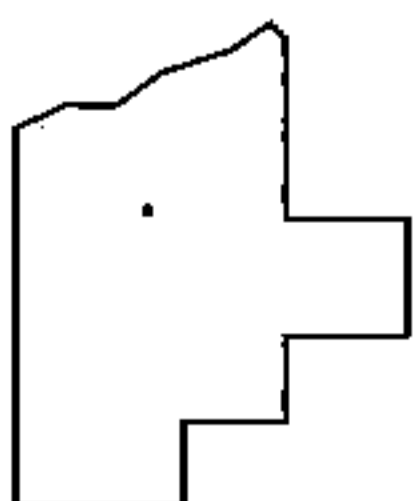
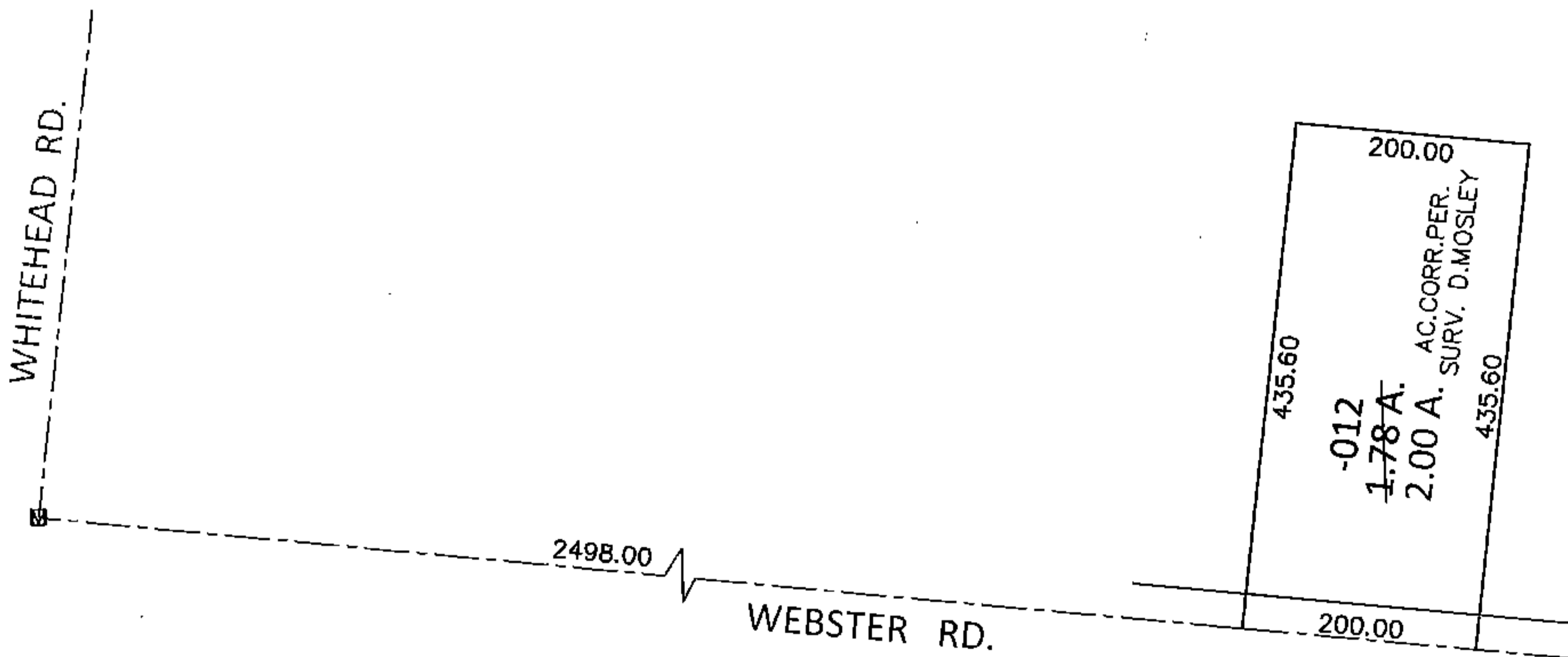
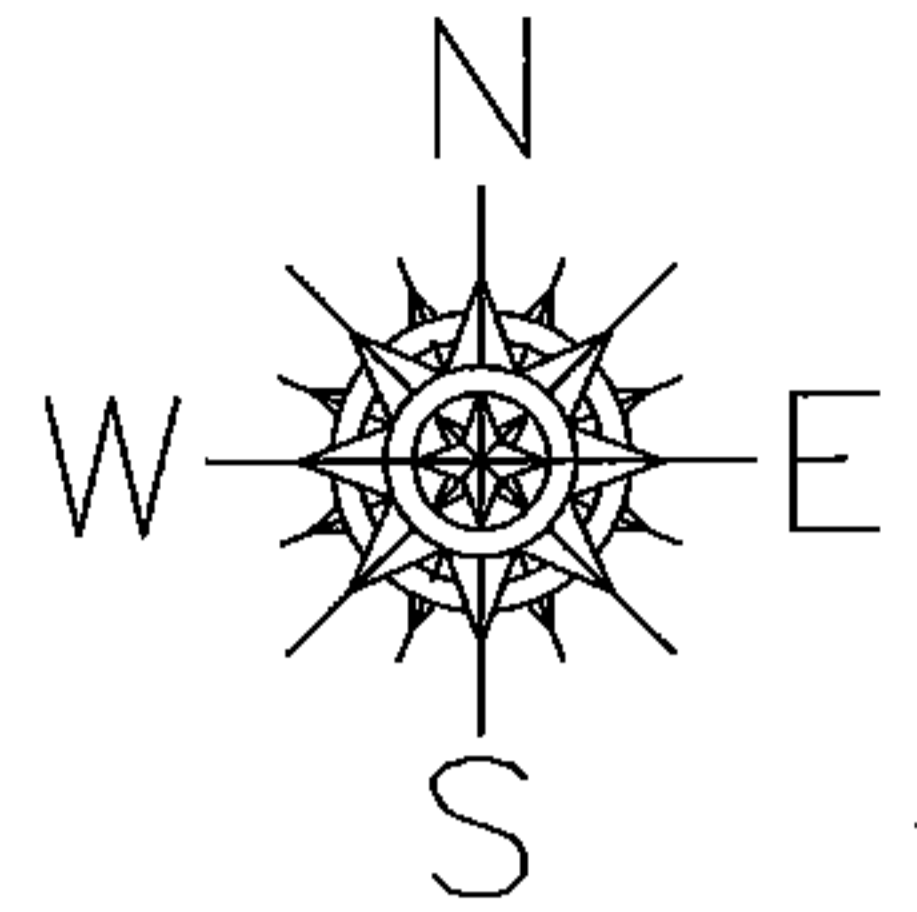


PARENT PARCEL: 15-00-097-000-012

CHILD PARCEL: _____

15-03296-A

STARTING POINT: AT A MON BOX AT THE INTERSECTION OF C/L OF WHITEHEAD RD. AND C/L OF WEBSTER RD.



SPLITS/DEEDS PROCESSED

LORAIN COUNTY TAX MAP DEPARTMENT
226 MIDDLE AVE. ELYRIA, OHIO

SURVEYED BY: DOUG MOSLEY

CLOSURE: .00:10,000

MAP PAGE(S): 15-F

APPROVED BY: RRM DATE: 9-17-15

SCALE: 1"= 200 PRIOR INST.: 20120411563