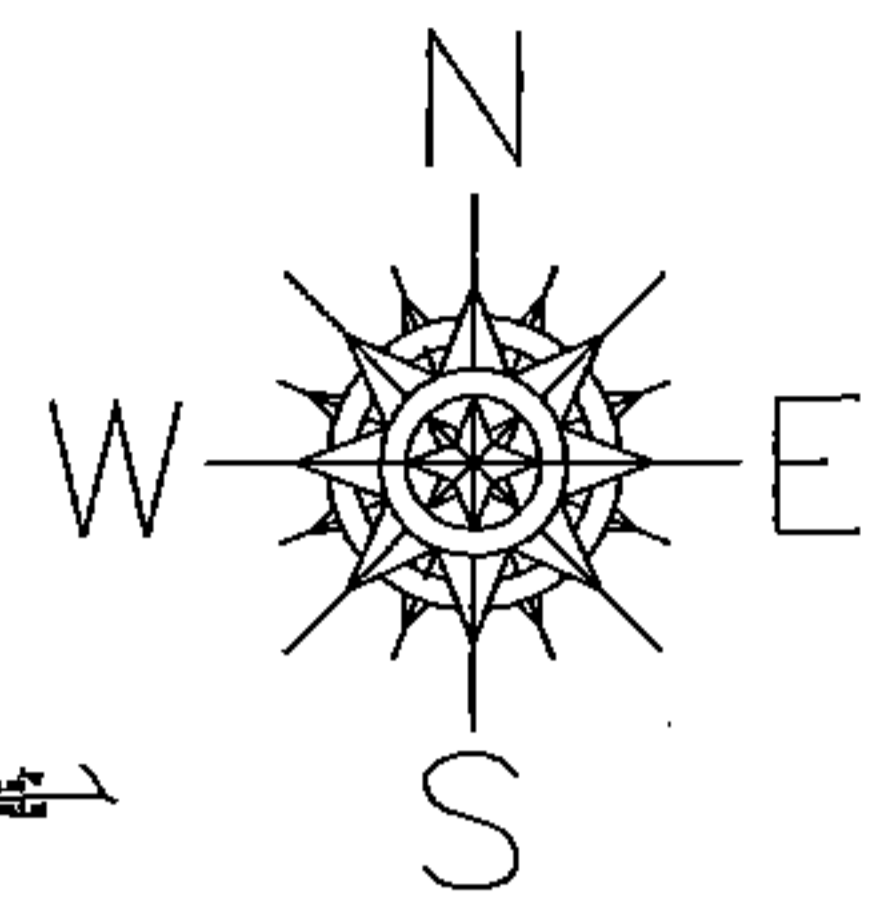


PARENT PARCEL: ADD TO DUPLICATE

CHILD PARCEL: 07-00-017-900-006

STARTING POINT: R.O.W. DEDICATION FOR RIDGEVILLE PARK SUBDIVISION P.V. 20 PG. 20 & 10' ADDITIONAL R.O.W. DEDICATION (RESOLUTION. 14) DV. 775 PG. 593-595

15-03291-A



ADD TO DUPLICATE

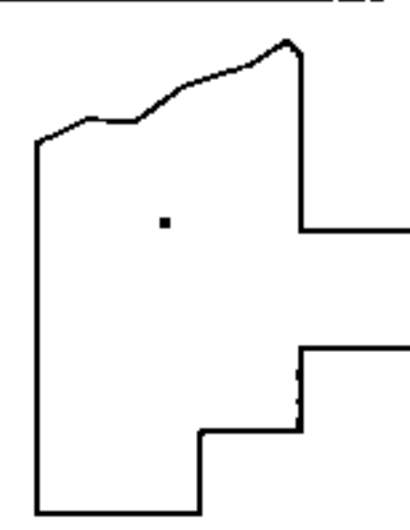
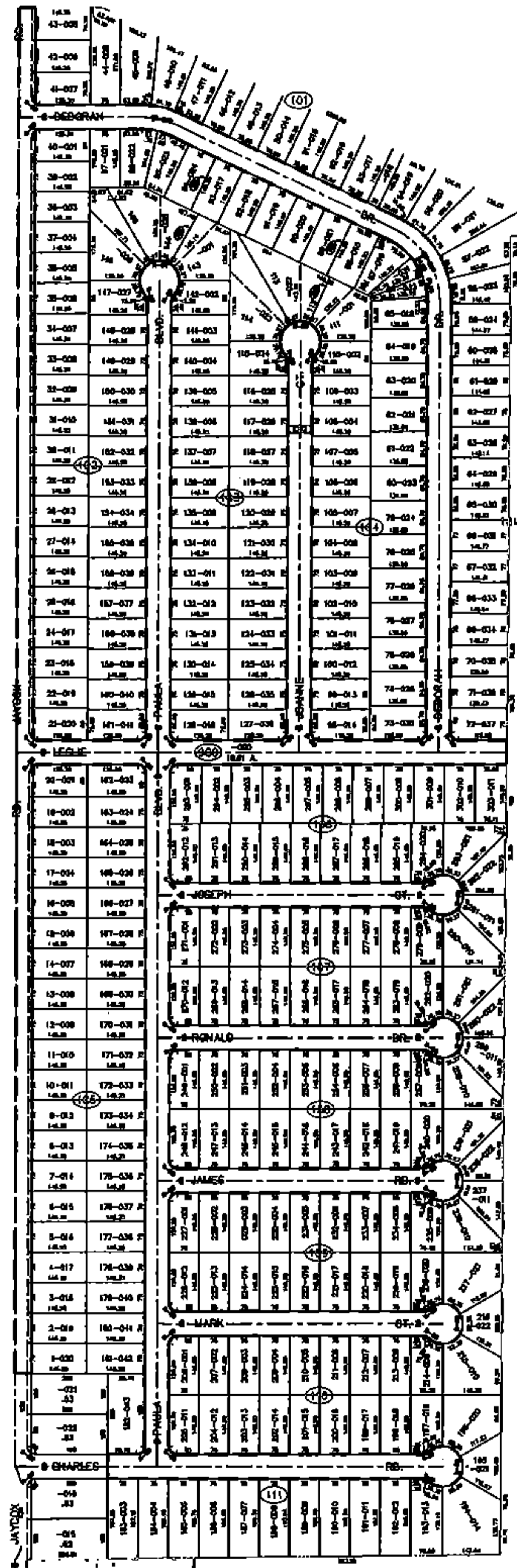
07-00-017-900-006

19.33 A.

PER P.V. 20 PG. 20

&

RESOLUTION NO. 14 DV. 775 PG. 593-595



SPLITS/DEEDS PROCESSED

LORAIN COUNTY TAX MAP DEPARTMENT  
226 MIDDLE AVE. ELYRIA, OHIO

SURVEYED BY: DONALD FRIEDMAN  
CLOSURE: NA  
MAP PAGE(S): 07-00-017  
APPROVED BY: TJS DATE: 9/15/15  
SCALE: 1" = 500 PRIOR INSTRUMENT: DV XXXX/XXX