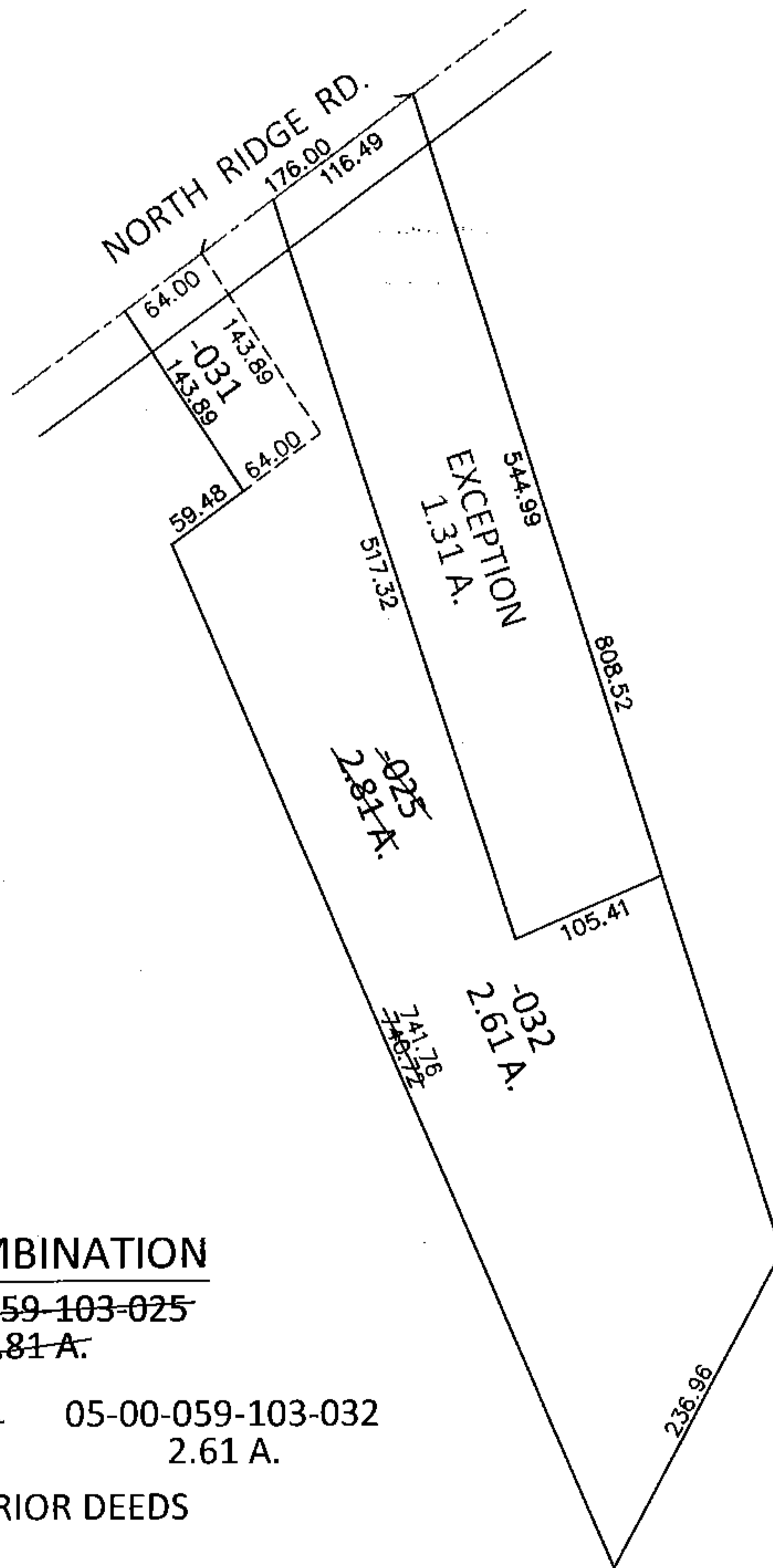
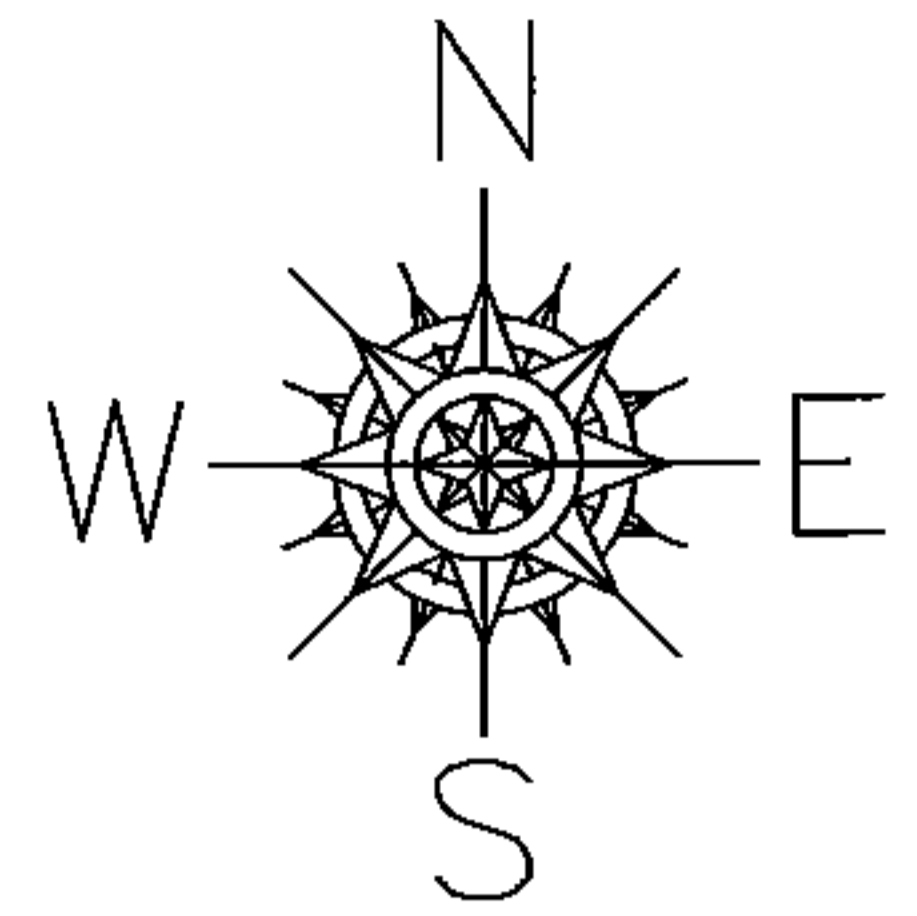


PARENT PARCEL: 05-00-059-103-025

CHILD PARCEL: 05-00-059-103-031, -032

STARTING POINT:

15-03290-U



UNCOMBINATION

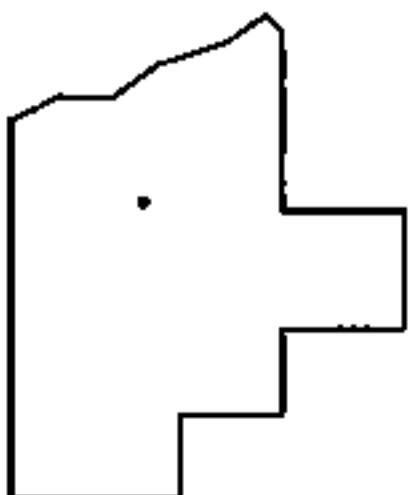
~~05-00-059-103-025~~

~~2.81 A.~~

05-00-059-103-031
64 X 143.89

05-00-059-103-032
2.61 A.

PER PRIOR DEEDS



SPLITS/DEEDS PROCESSED

LORAIN COUNTY TAX MAP DEPARTMENT
226 MIDDLE AVE. ELYRIA, OHIO

SURVEYED BY: N/A

CLOSURE: .01:10,000

MAP PAGE(S): 5-00-059-A

APPROVED BY: RRM DATE: 9-3-15

SCALE: 1"= 150' PRIOR INST.: 20130479143