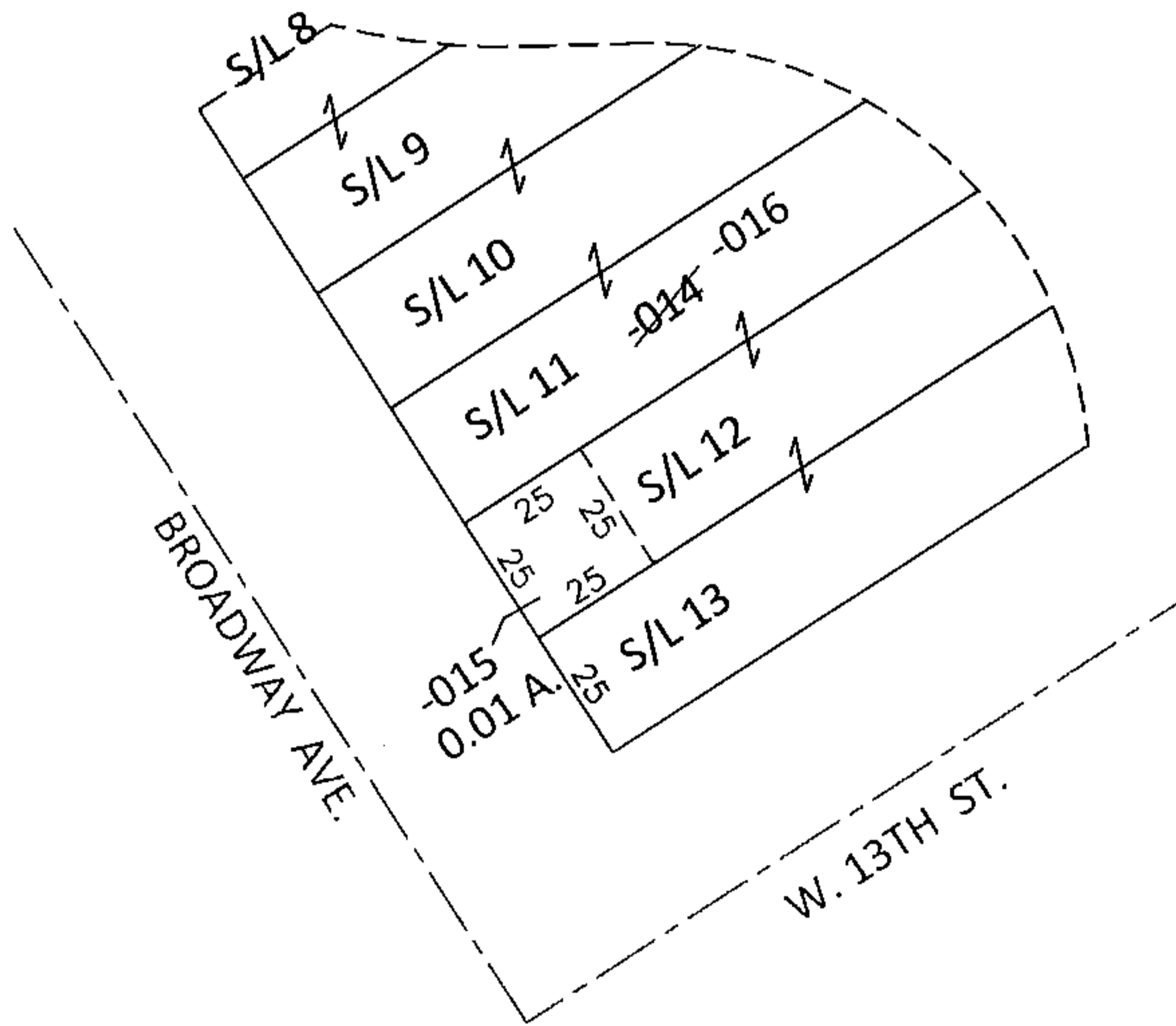
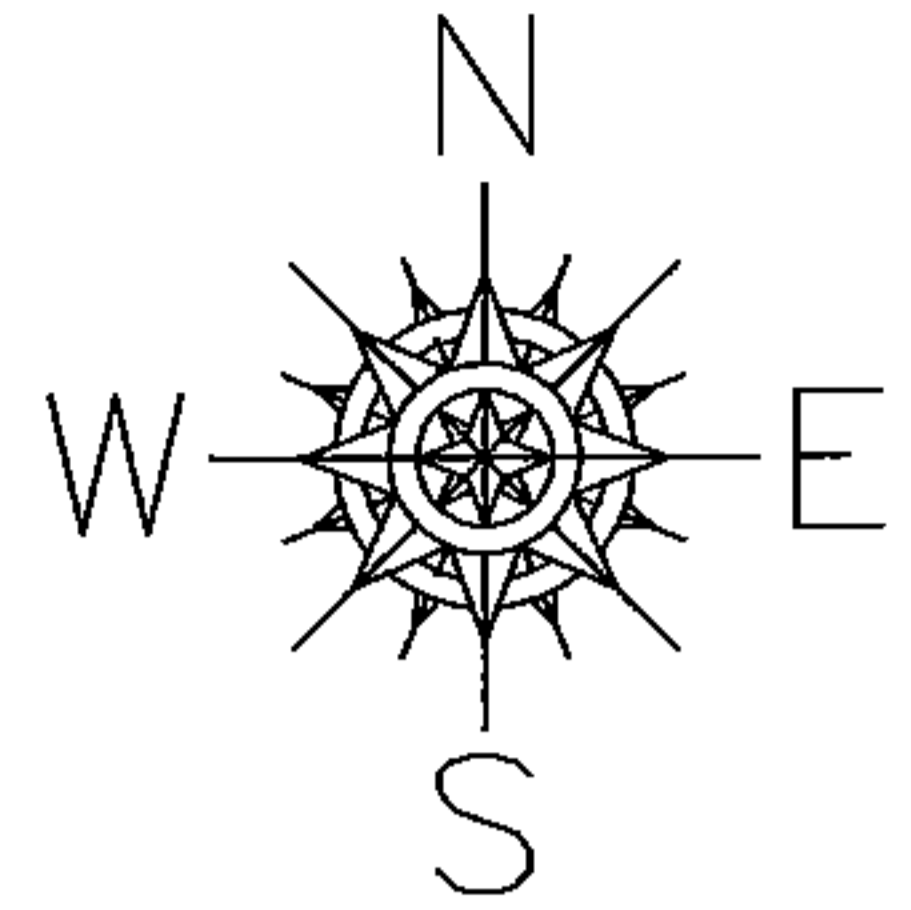


PARENT PARCEL: 02-01-003-130-014

CHILD PARCEL: 02-01-003-130-015, -016

STARTING POINT: INTERSECTION OF NORTH LINE OF W.13TH ST. AND EAST LINE OF BROADWAY AVE.

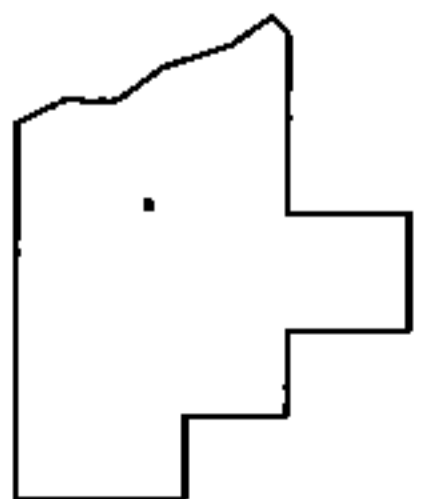
14-03288



~~02-01-003-130-014~~
~~140 X 103.12 IRR~~

02-01-003-130-015
0.01 A.

02-01-003-130-016
115 X 103.12 IRR



SPLITS/DEEDS PROCESSED

LORAIN COUNTY TAX MAP DEPARTMENT
226 MIDDLE AVE. ELYRIA, OHIO

SURVEYED BY: DOUGLAS A. HASEL

CLOSURE: .00:10,000

MAP PAGE(S): 2-01-003-C

APPROVED BY: RRM DATE: 9-17-14

SCALE: 1"= 50' PRIOR INST.: DV XXXX/XXX