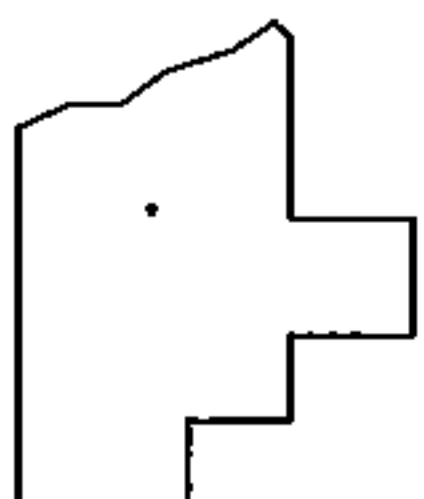
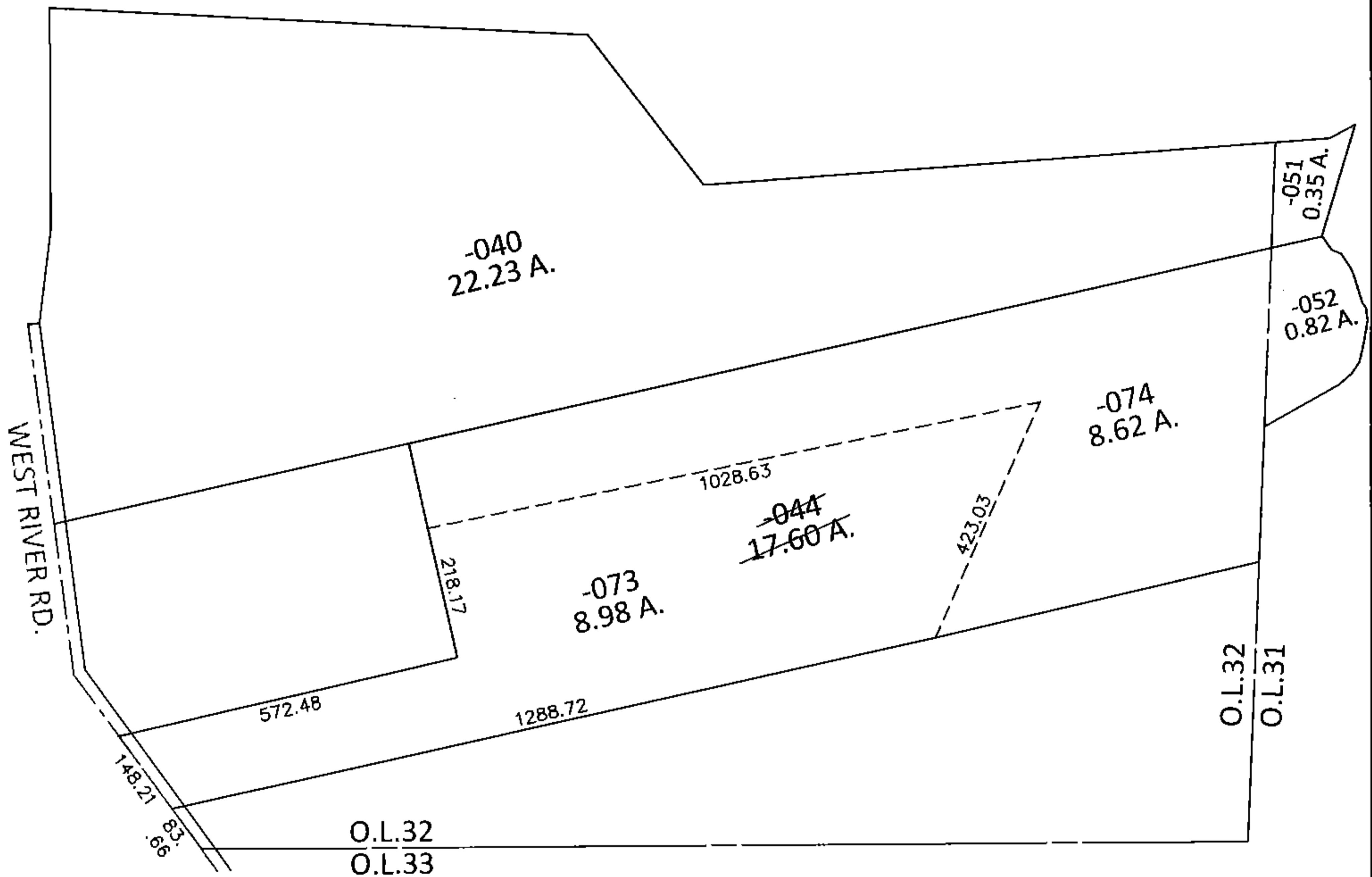
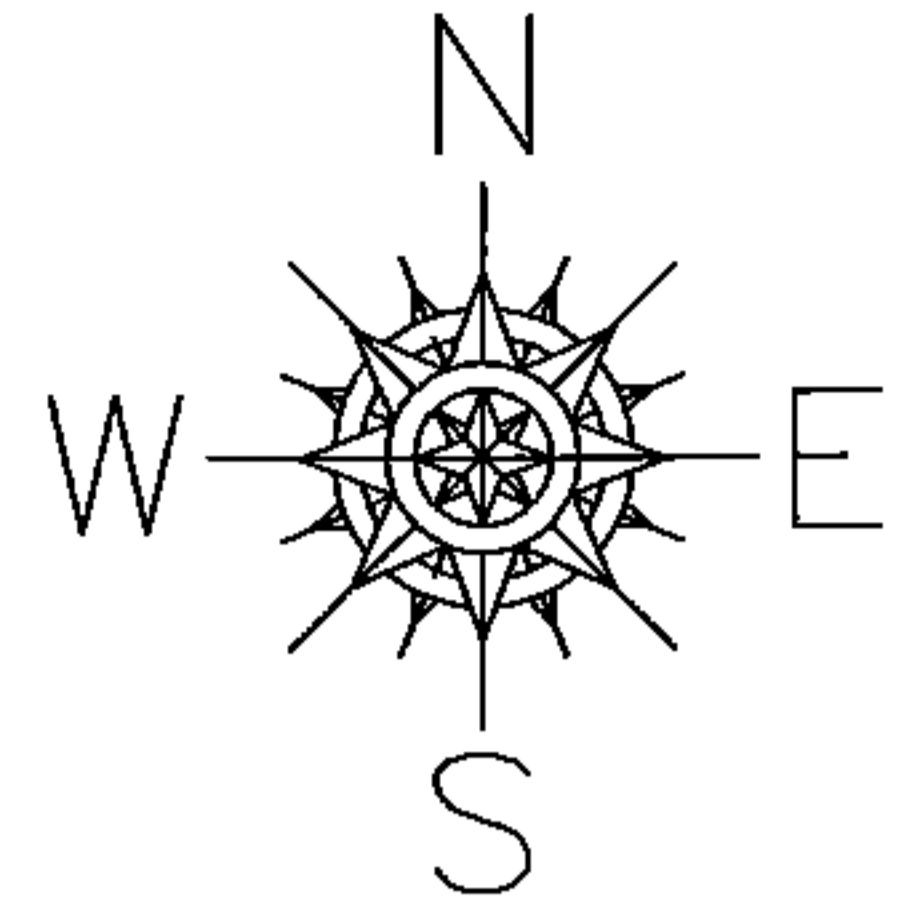


PARENT PARCEL: 01-00-032-000-044

CHILD PARCEL: 01-00-032-000-073, -074

STARTING POINT: INTERSECTION OF C/L OF WEST RIVER RD. AND SOUTH LINE OF O.L.32

14-03287



**SPLITS/DEEDS PROCESSED**

LORAIN COUNTY TAX MAP DEPARTMENT  
226 MIDDLE AVE. ELYRIA, OHIO

SURVEYED BY: ADAM E. WEAVER

CLOSURE: .01:10,000

MAP PAGE(S): 1-E

APPROVED BY: RRM DATE: 9-11-14

SCALE: 1"= 300 PRIOR INST.: 20050116192