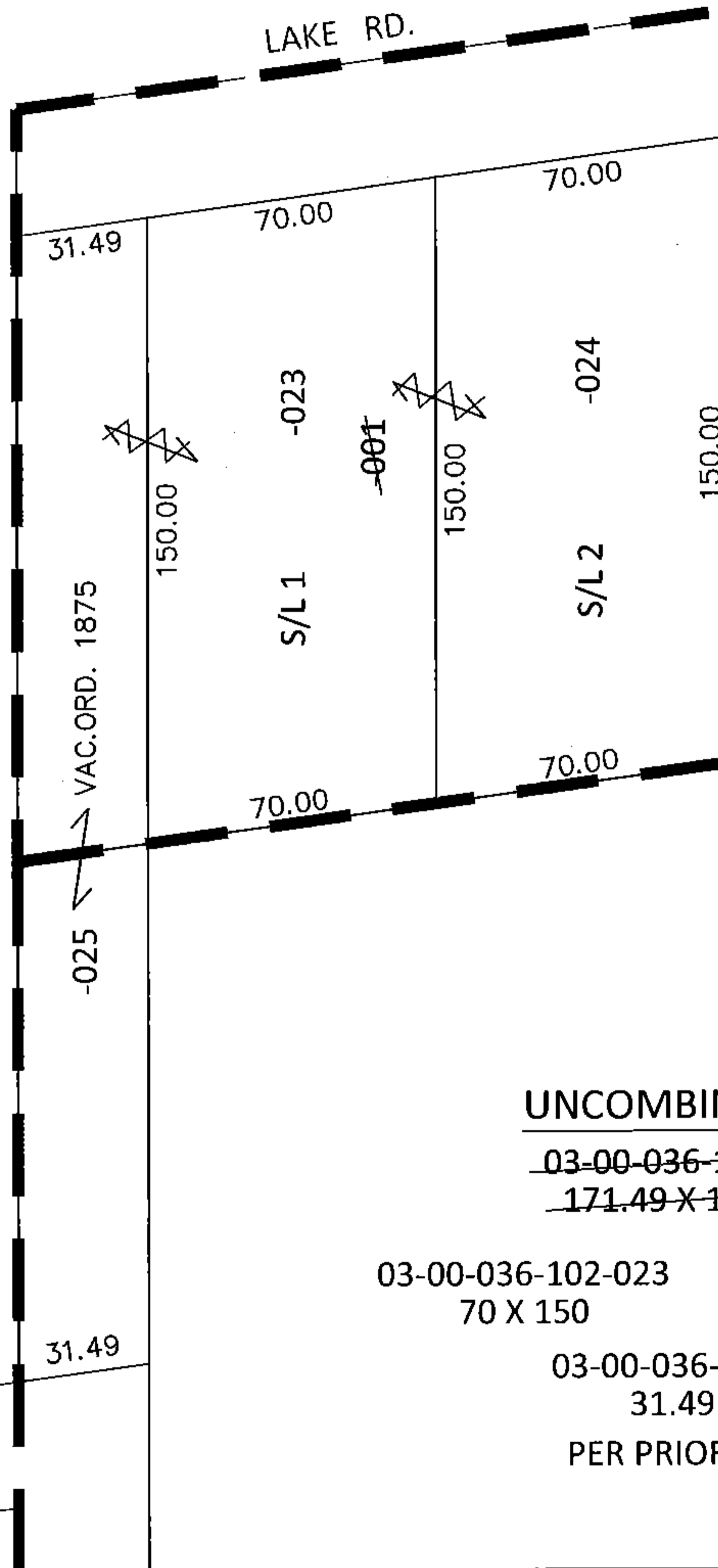
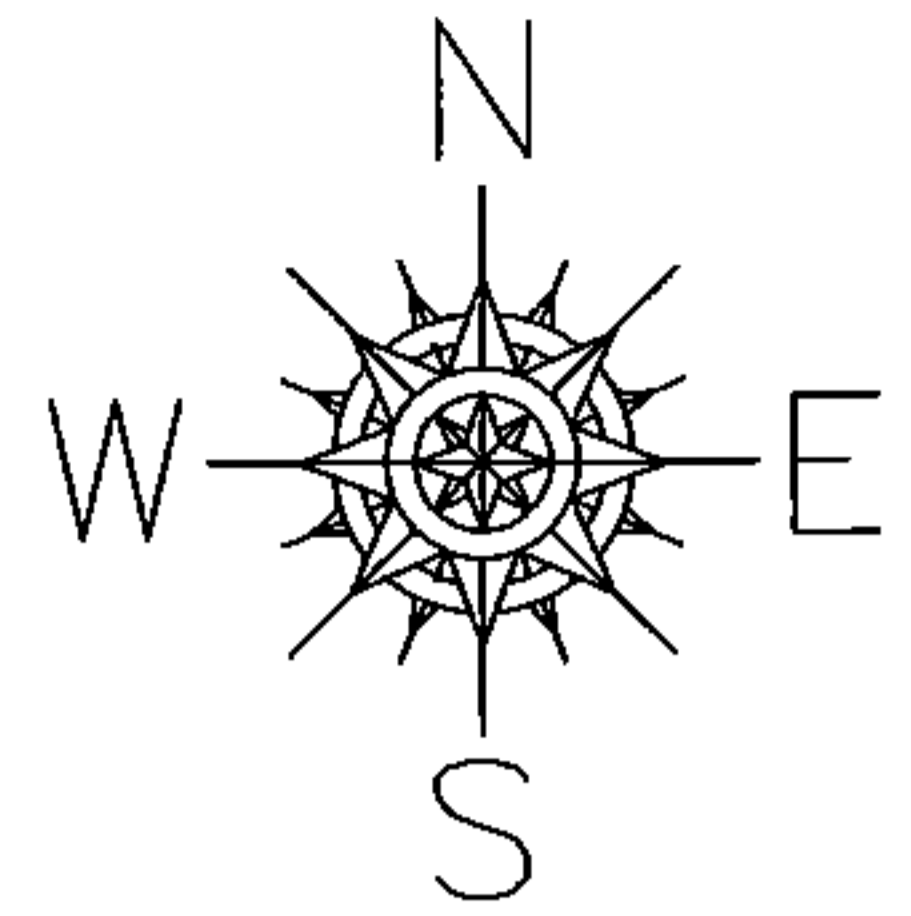


PARENT PARCEL: 03-00-036-102-001

CHILD PARCEL: 03-00-036-102-023 THRU -025

STARTING POINT: INTERSECTION OF WEST LINE OF S/L 1 AND SOUTH LINE OF LAKE RD.

15-03286-X



UNCOMBINATION

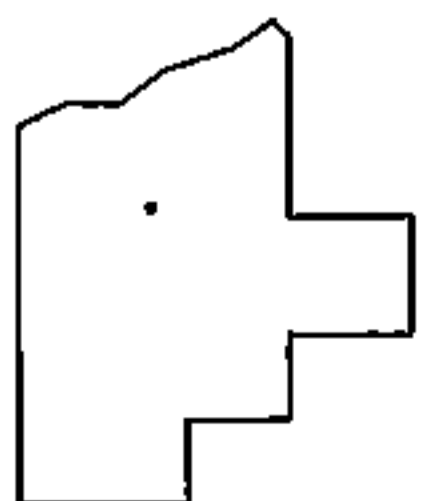
~~03-00-036-102-001~~
~~171.49 X 150 IRR~~

03-00-036-102-023
70 X 150

03-00-036-102-024
70 X 150

03-00-036-102-025
31.49 X ?

PER PRIOR DEEDS



SPLITS/DEEDS PROCESSED

LORAIN COUNTY TAX MAP DEPARTMENT
226 MIDDLE AVE. ELYRIA, OHIO

SURVEYED BY: N/A

CLOSURE: N/A

MAP PAGE(S): 3-00-036

APPROVED BY: RRM DATE: 8-31-15

SCALE: 1" = 50' PRIOR INST.: 20120410562