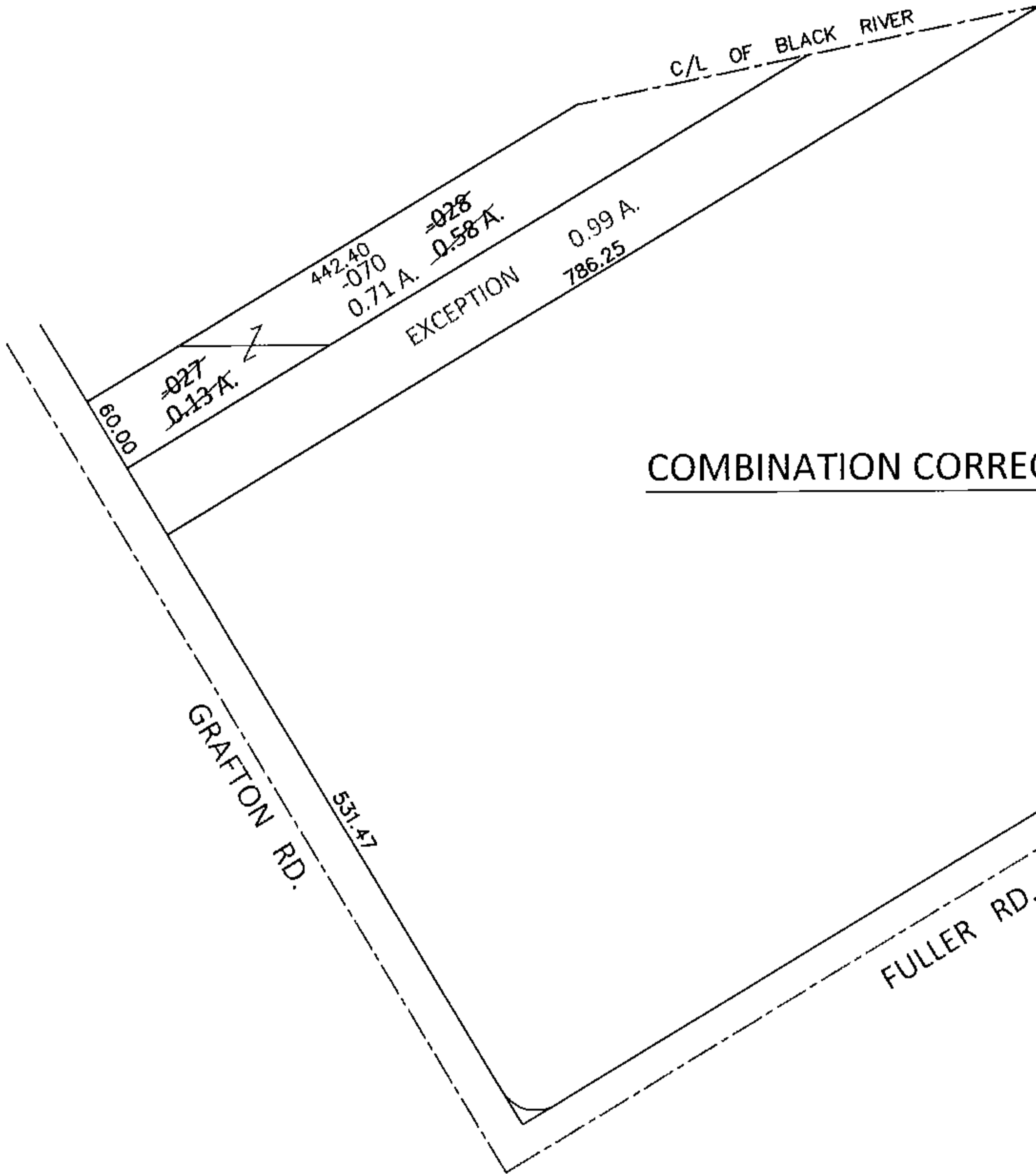
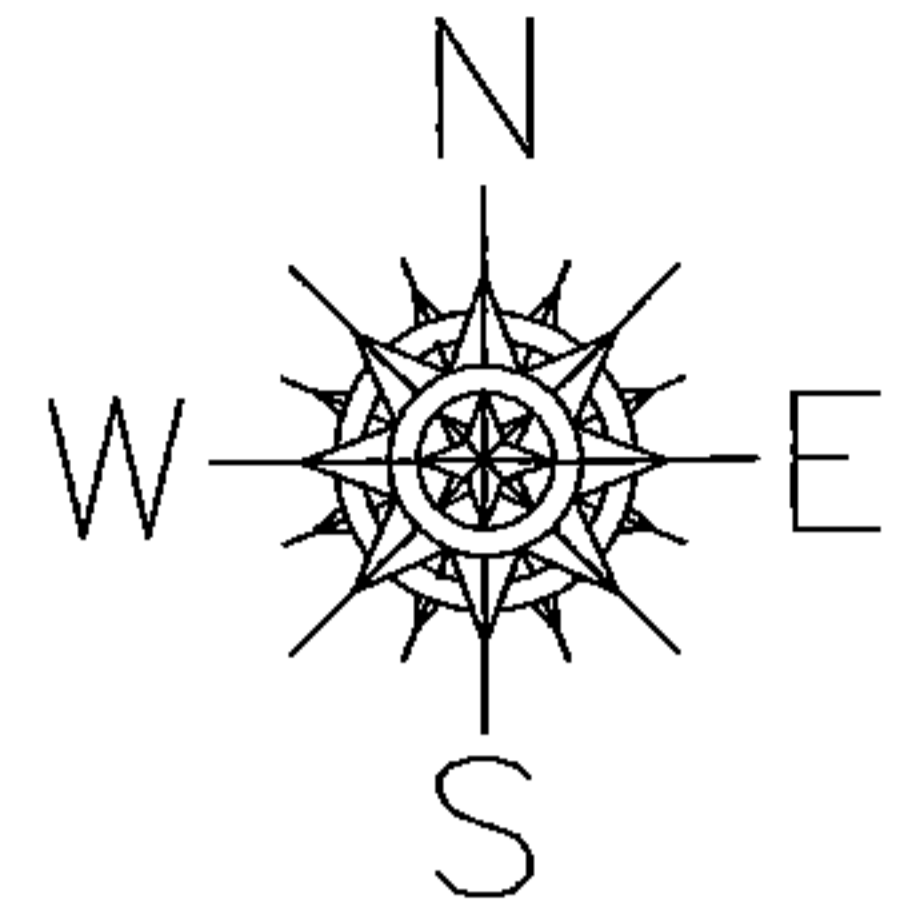


PARENT PARCEL: 10-00-004-129-027,-028

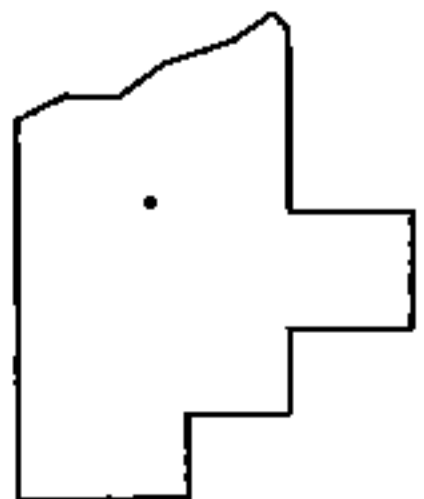
CHILD PARCEL: 10-00-004-129-070

STARTING POINT: INTERSECTION OF EAST LINE OF GRAFTON RD. AND NORTH LINE OF FULLER RD.

15-03278-C



COMBINATION CORRECTION



SPLITS/DEEDS PROCESSED

LORAIN COUNTY TAX MAP DEPARTMENT
226 MIDDLE AVE. ELYRIA, OHIO

SURVEYED BY: N/A

CLOSURE: N/A

MAP PAGE(S): 10-00-004-B

APPROVED BY: RRM DATE: 8-19-15

SCALE: 1"=150 PRIOR INST.: OR 1356/988