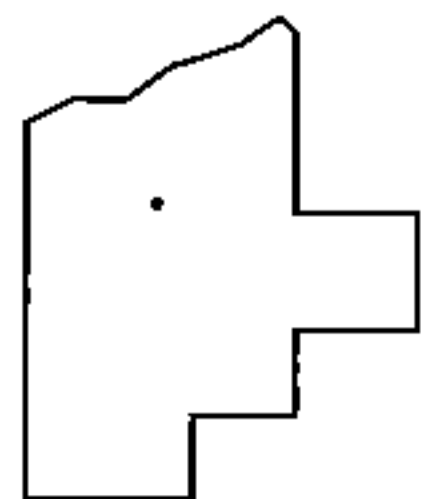
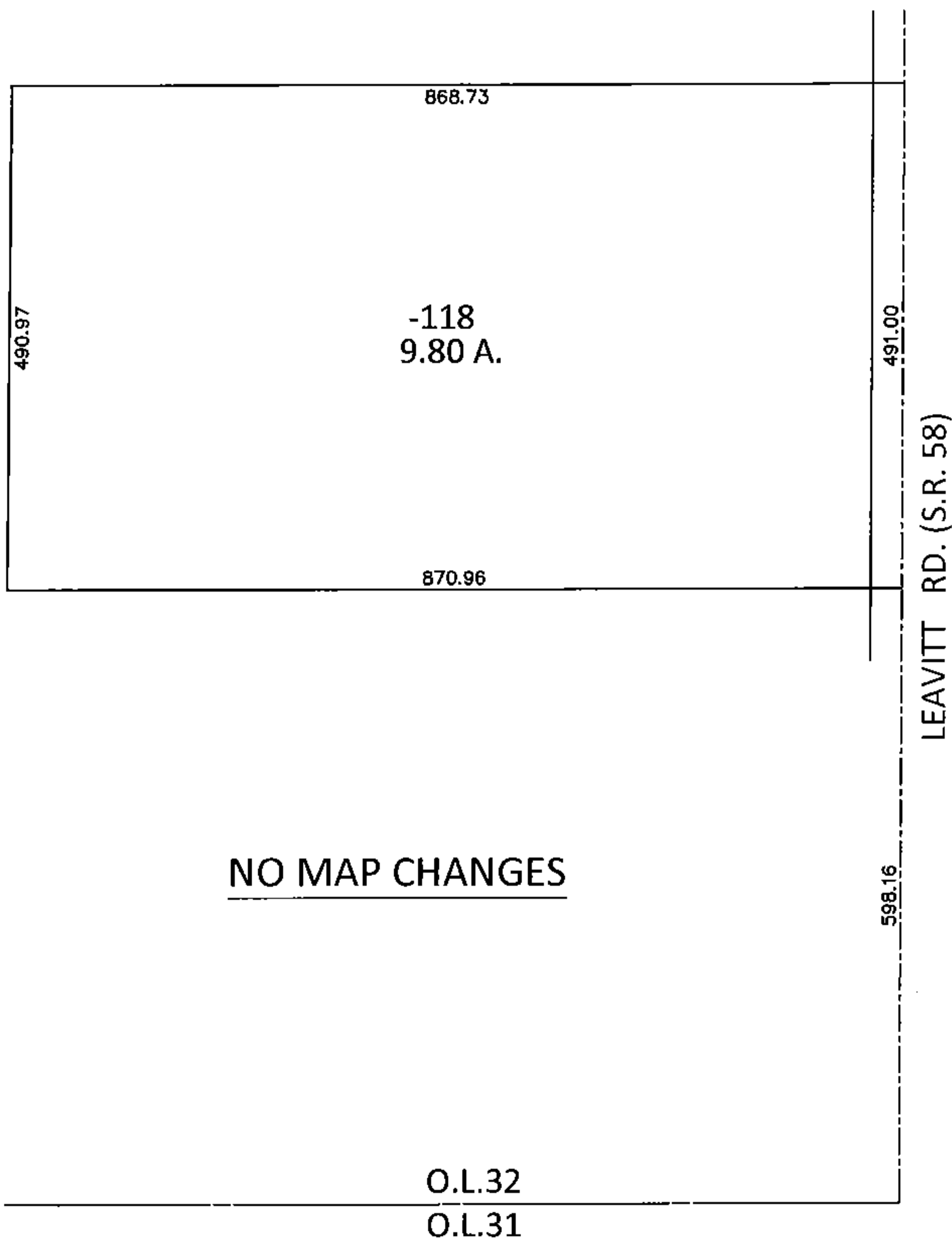
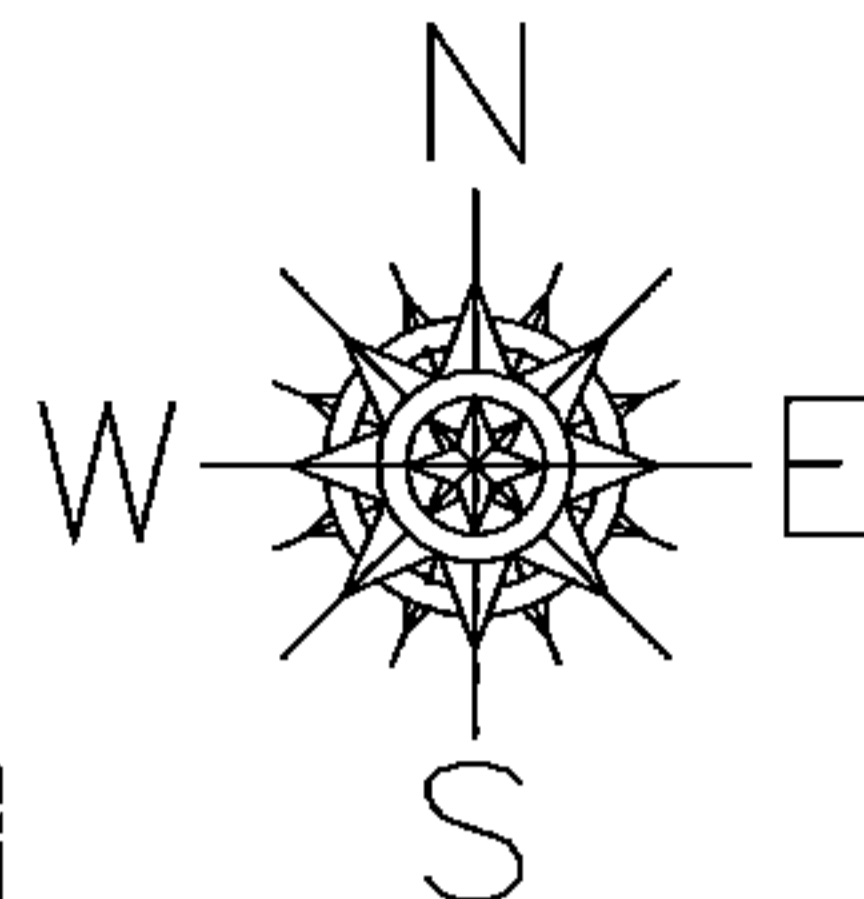


PARENT PARCEL: 05-00-032-000-118

CHILD PARCEL: \_\_\_\_\_

STARTING POINT: SOUTHEAST CORNER OF O.L.32

15-03276-A



**SPLITS/DEEDS PROCESSED**

LORAIN COUNTY TAX MAP DEPARTMENT  
226 MIDDLE AVE. ELYRIA, OHIO

SURVEYED BY: AMY M. KELLY

CLOSURE: .01:10,000

MAP PAGE(S): 5-00-032-B

APPROVED BY: RRM DATE: 8-13-15

SCALE: 1"= 200 PRIOR INST.: OR 295/395