

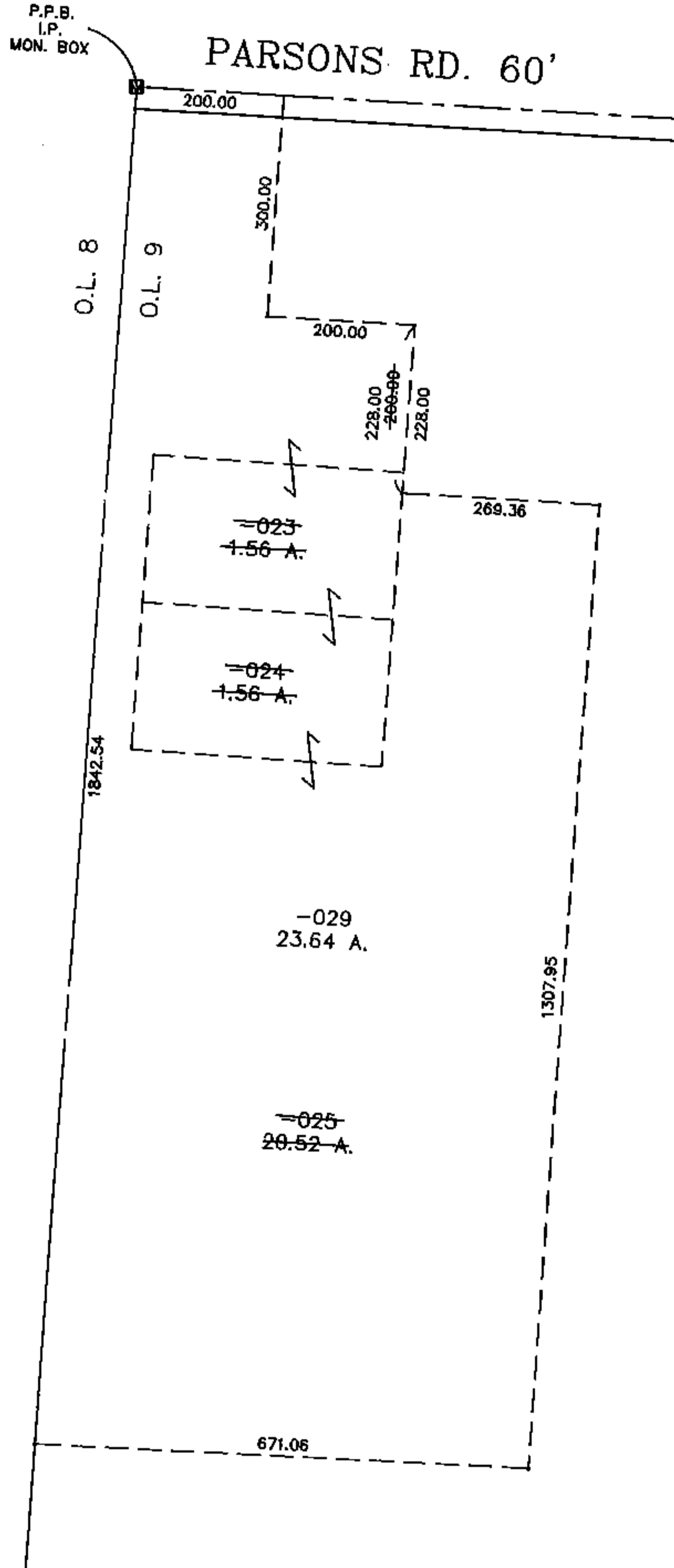
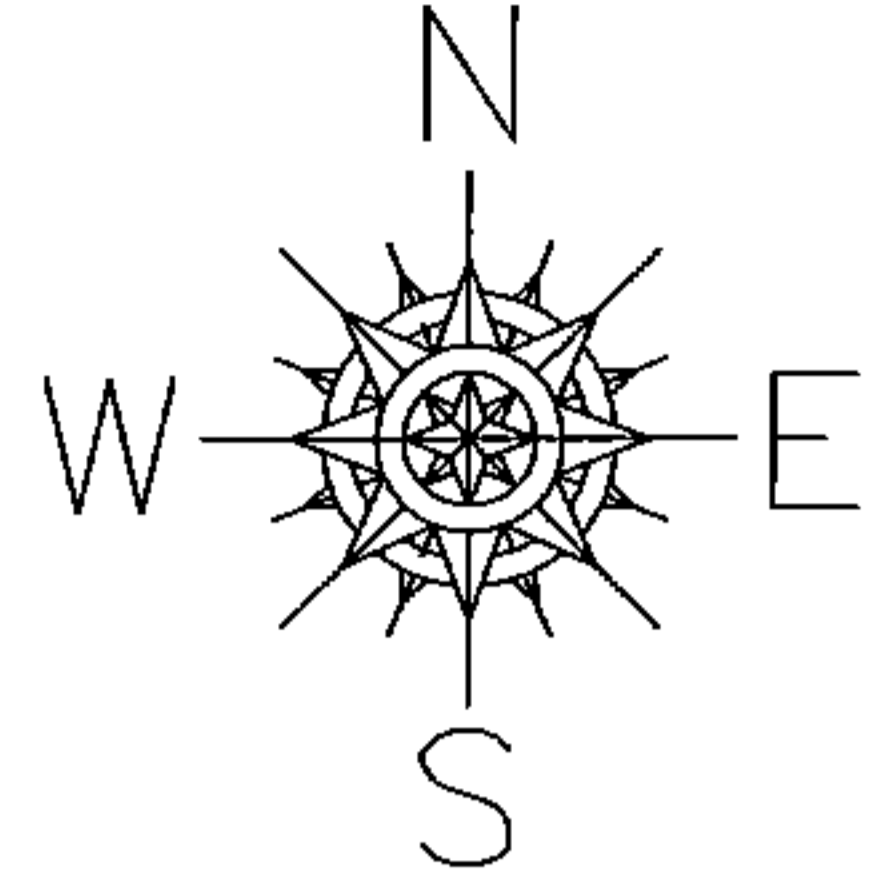
PARENT PARCEL: 15-00-009-000-023, -024, & -025

CHILD PARCEL: 15-00-009-000-029

STARTING POINT: I.P. MON. BOX, CL OF PARSONS RD. & N.W. CORNER OF O.L. 9

14-03273

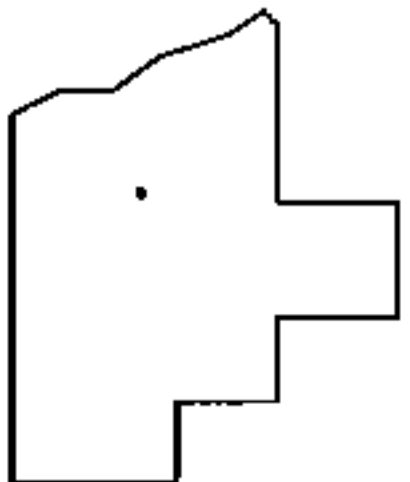
COMBINATION



PRIOR INSTRUMENT: 20070225561

PRIOR INSTRUMENT: 20080238303

PRIOR INSTRUMENT: 20080239509



SPLITS/DEEDS PROCESSED  
LORAIN COUNTY TAX MAP DEPARTMENT  
226 MIDDLE AVE. ELYRIA, OHIO

SURVEYED BY: THOMAS A. SIMON  
CLOSURE: 0.01 : 10.000  
MAP PAGE(S): 15-00-009  
APPROVED BY: TJS DATE: 8/6/14  
SCALE: 1" = 300'