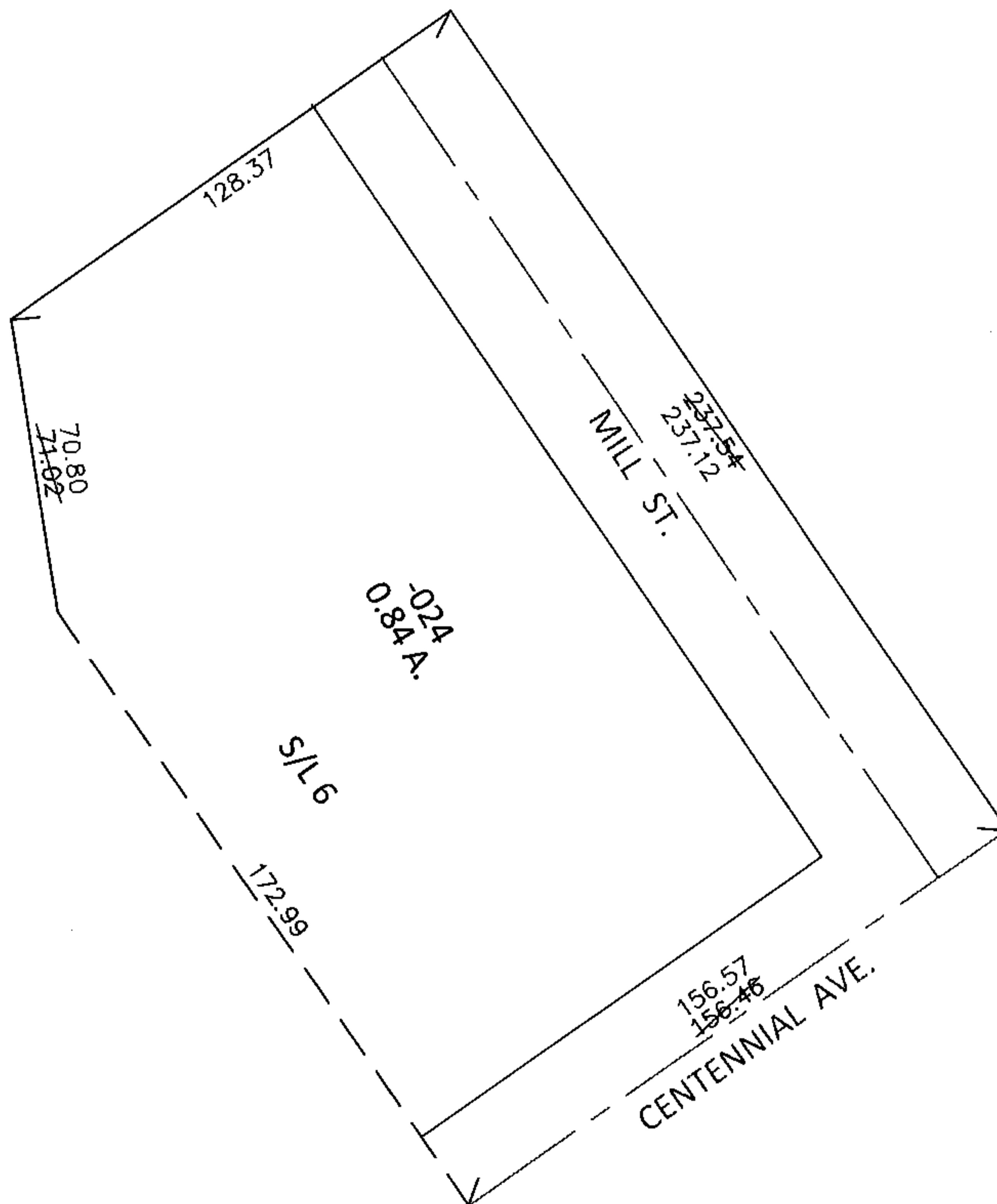
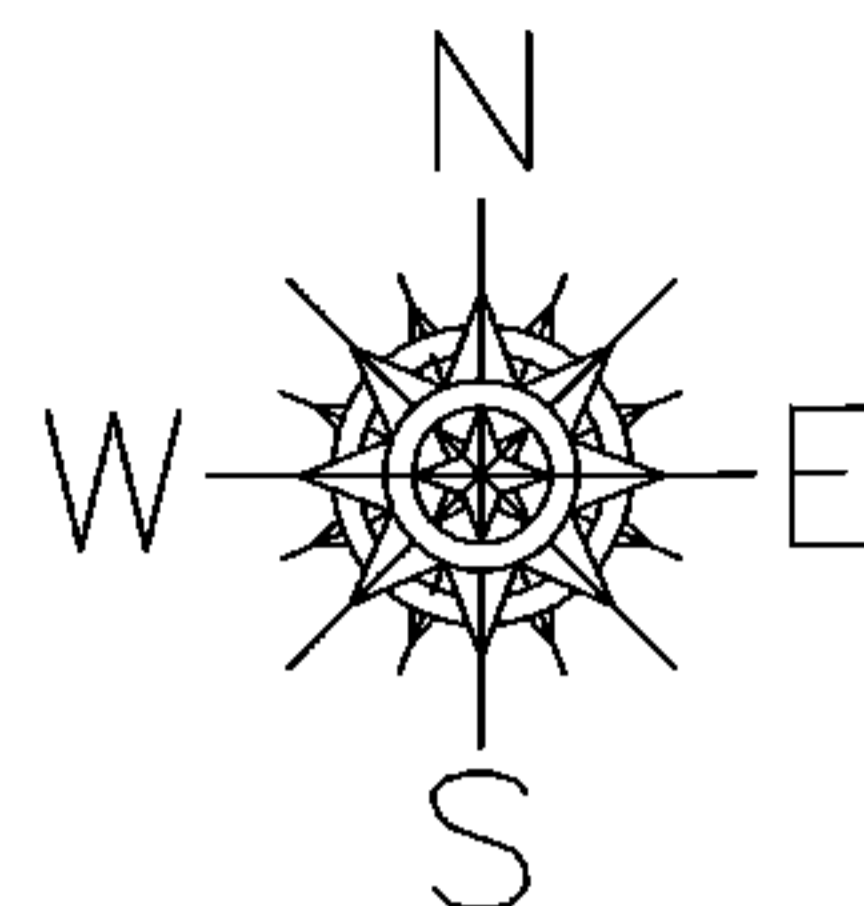


PARENT PARCEL: 04-00-011-103-024

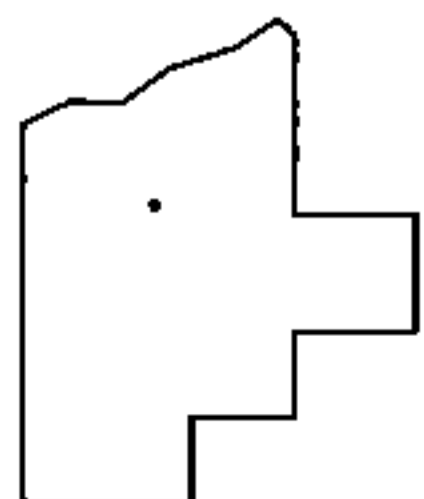
CHILD PARCEL: _____

STARTING POINT: INTERSECTION OF C/L OF CENTENNIAL AVE AND EAST LINE OF MILL ST.

15-03273-D



MAP CORRECTION ONLY



SPLITS/DEEDS PROCESSED

LORAIN COUNTY TAX MAP DEPARTMENT
226 MIDDLE AVE. ELYRIA, OHIO

SURVEYED BY: KS ASSOC.

CLOSURE: .01:10,000

MAP PAGE(S): 4-00-011-B

APPROVED BY: RRM DATE: 8-7-15

SCALE: 1"=50' PRIOR INST.: 20150554535