

PARENT PARCEL: 06-24-069-102-002

CHILD PARCEL: XX-XX-XXX-XXX-XXX

STARTING POINT: N.E. CORNER OF S/L 13

15-03272-C

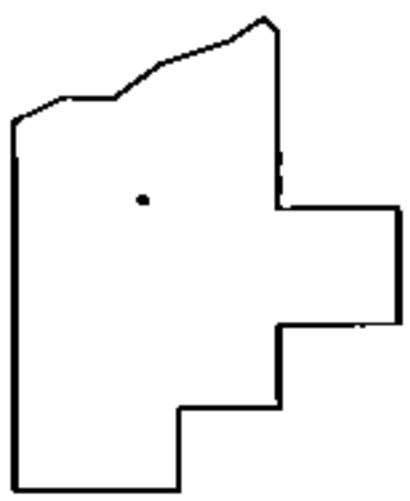
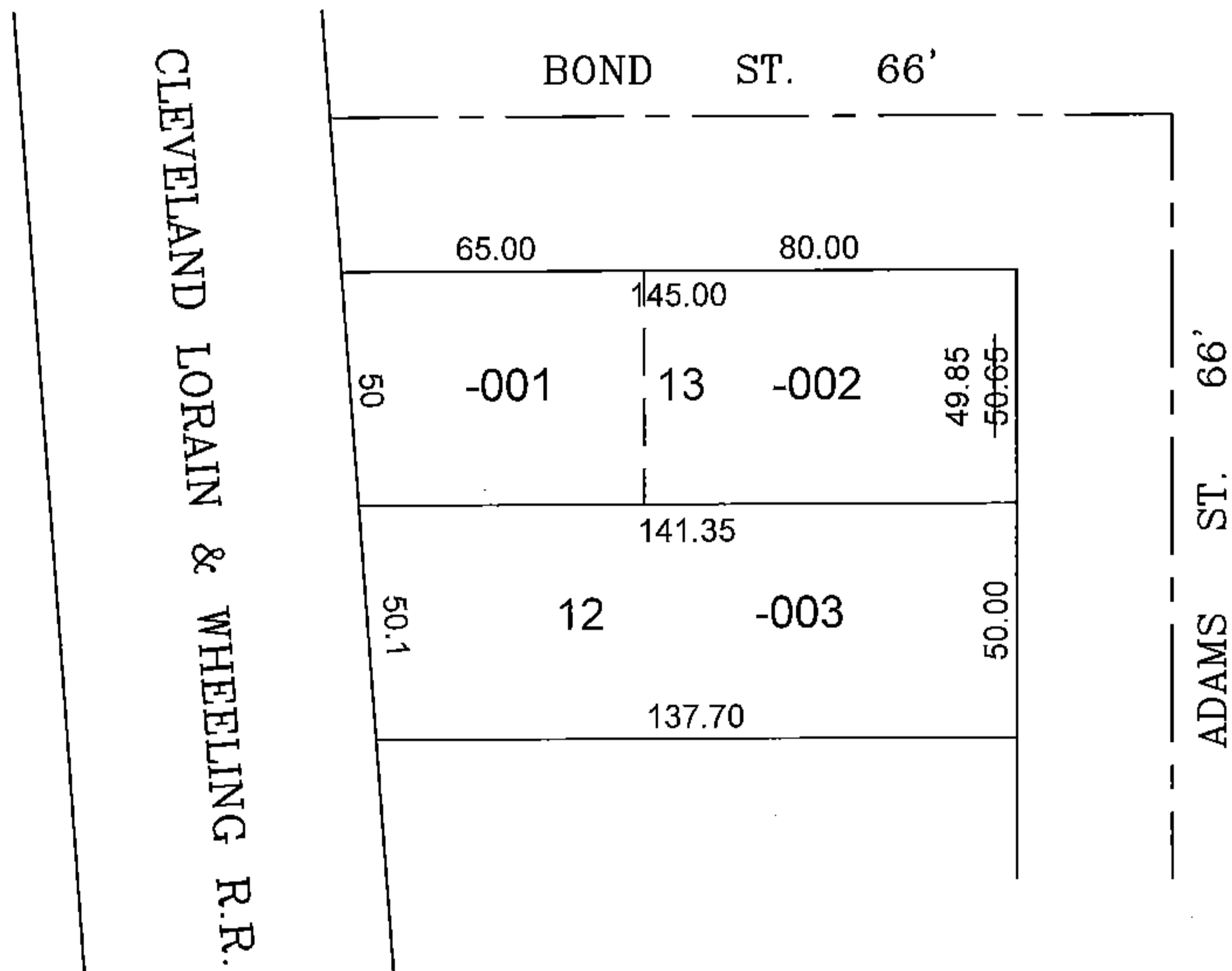
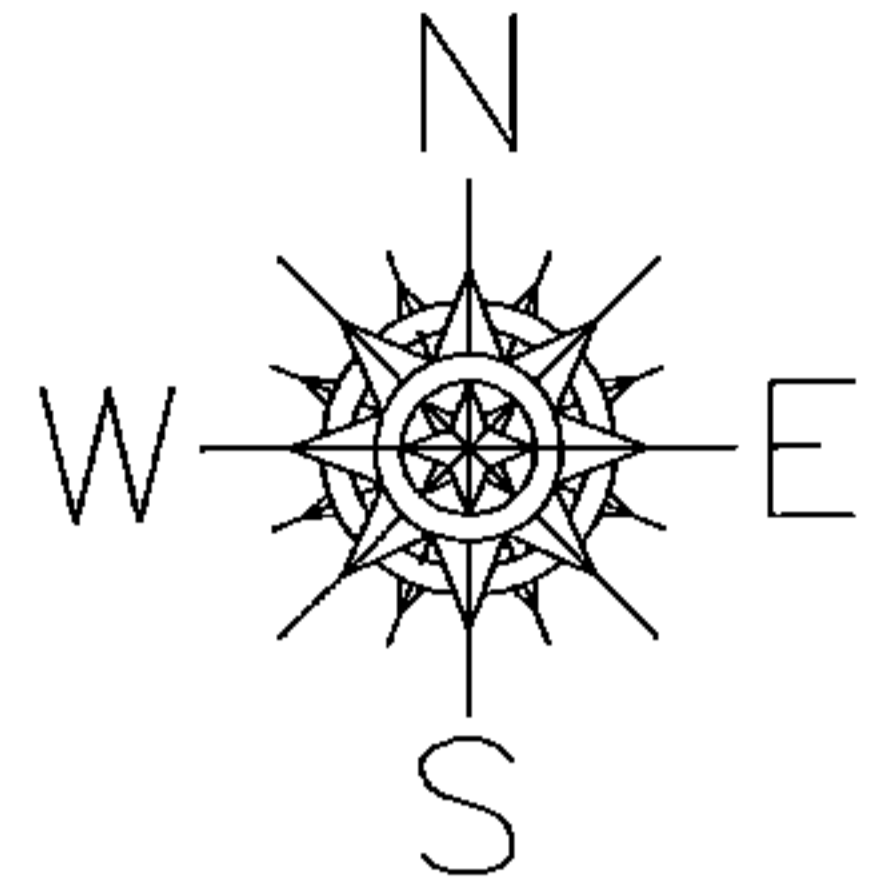
FRONTAGE CORRECTION

06-24-069-102-002

~~50.56 X 80~~

49.85 X 80.00

CORR. PER INST. # 2013-0480654



SPLITS/DEEDS PROCESSED

LORAIN COUNTY TAX MAP DEPARTMENT
226 MIDDLE AVE. ELYRIA, OHIO

SURVEYED BY: NA
 CLOSURE: NA
 MAP PAGE(S): 06-24-069
 APPROVED BY: TJS DATE: 8/10/15
 SCALE: 1"=50' PRIOR INST.: 20130480654