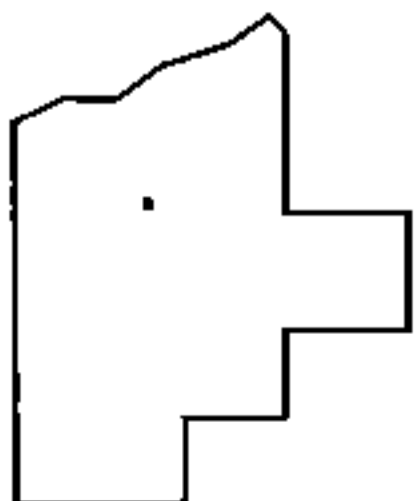
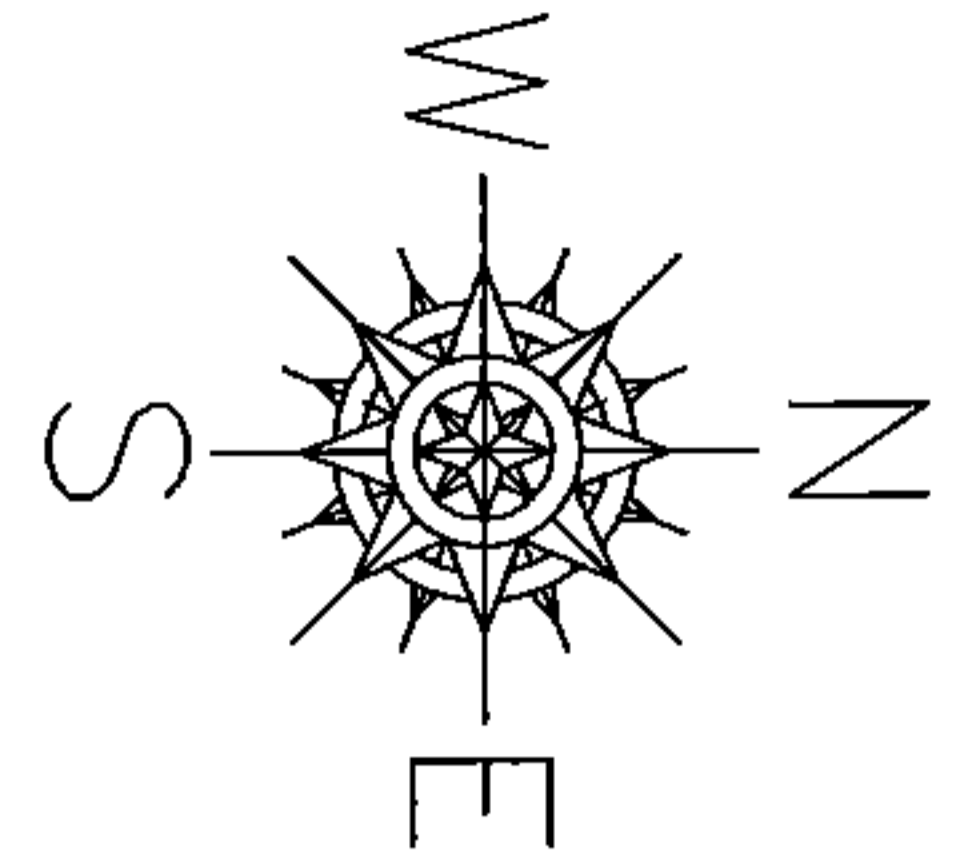
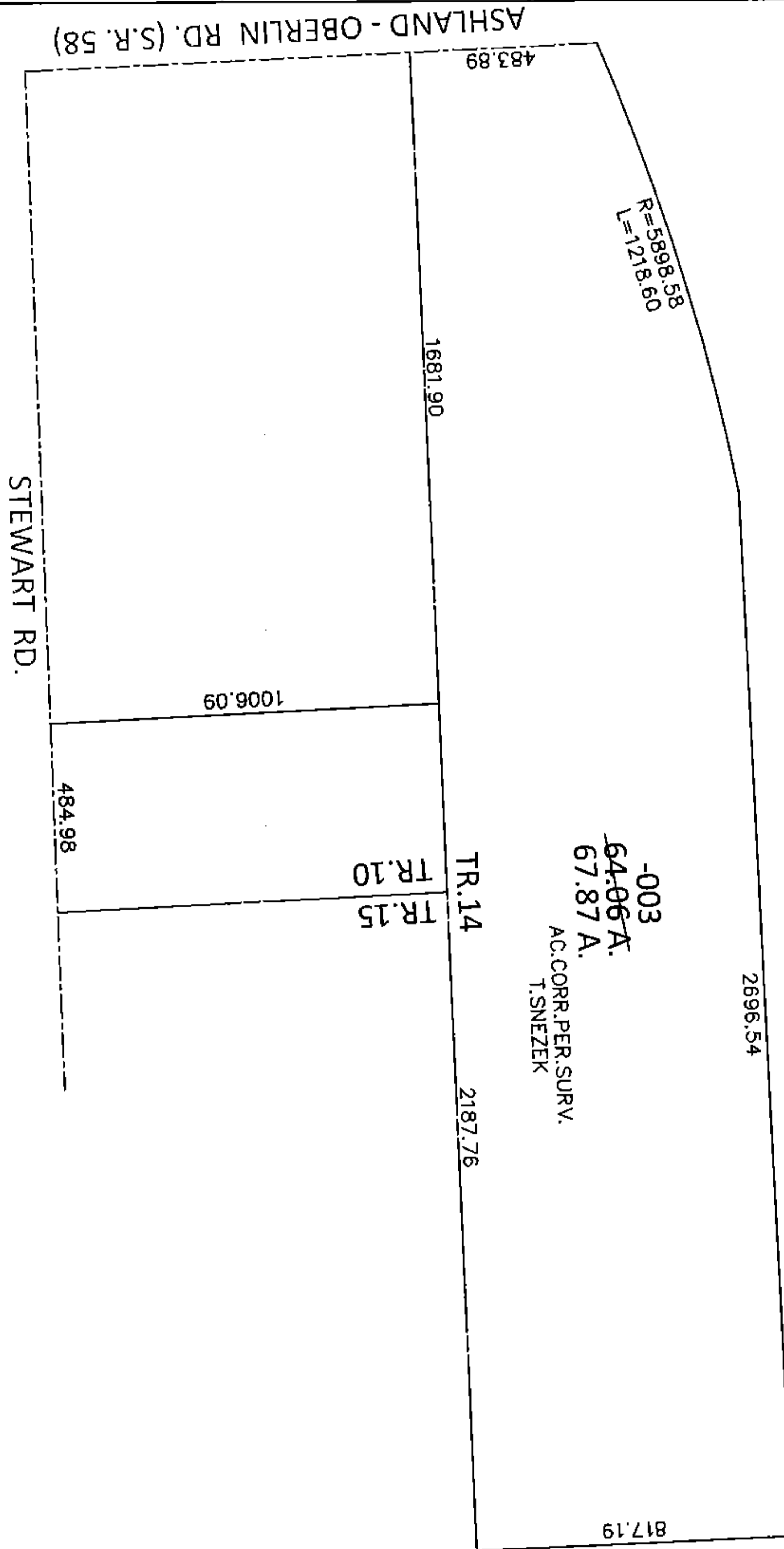


PARENT PARCEL: 21-14-000-000-003

CHILD PARCEL:

STARTING POINT: INTERSECTION OF C/L OF STEWART RD. AND EAST LINE OF TR. 10

15-03267-A



SPLITS/DEEDS PROCESSED

LORAIN COUNTY TAX MAP DEPARTMENT
226 MIDDLE AVE. ELYRIA, OHIO

SURVEYED BY: THOMAS M. SNEZEK

CLOSURE: .01:10,000

MAP PAGE(S): 21-G

APPROVED BY: RRM DATE: 7-31-15

SCALE: 1"= 500 PRIOR INST.: DV 932/297