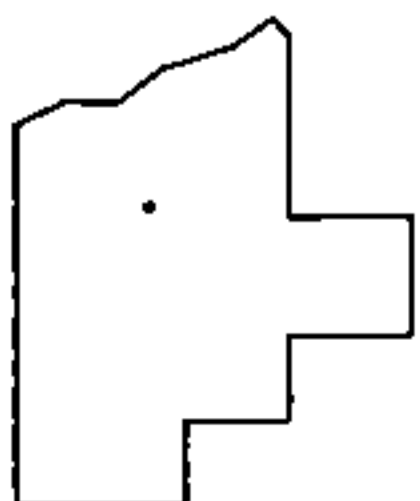
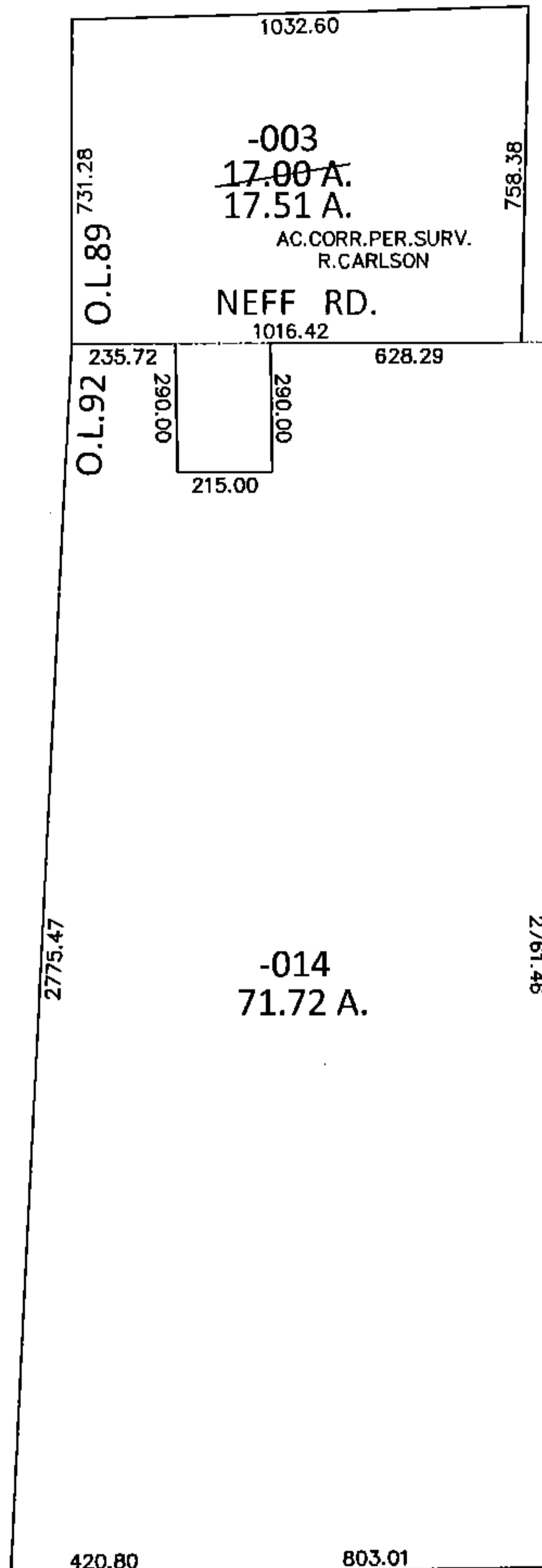
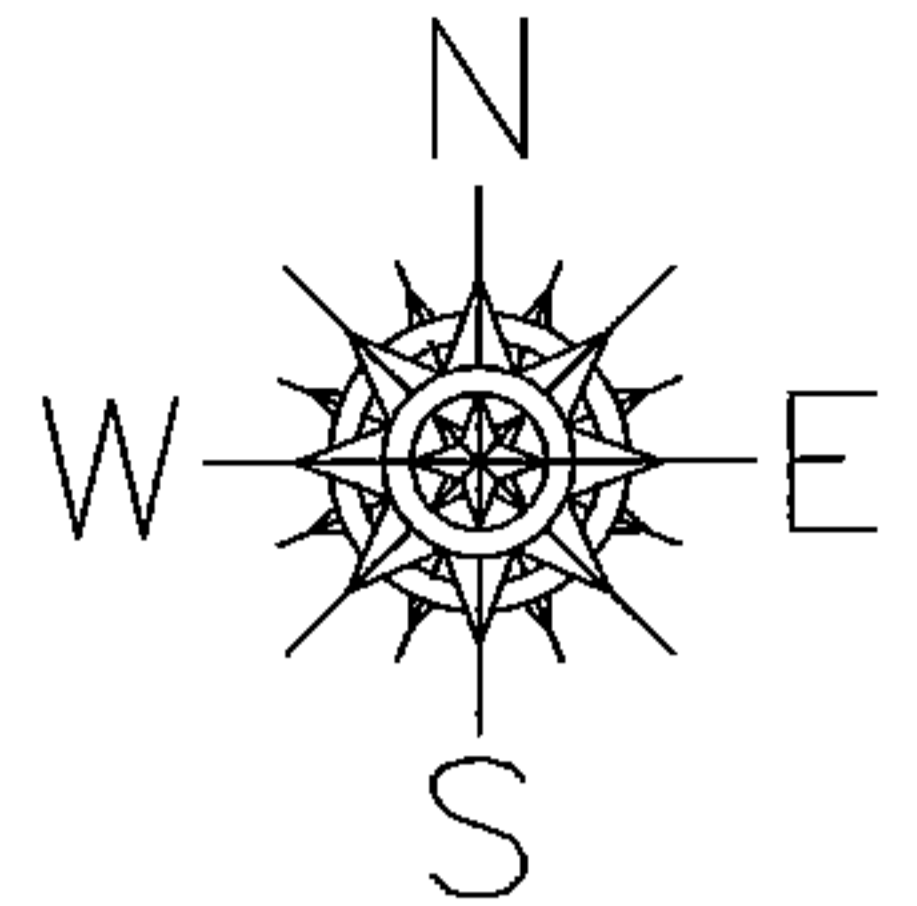


PARENT PARCEL: 16-00-089-000-003, 16-00-092-000-014

CHILD PARCEL: _____

STARTING POINT: SOUTHWEST CORNER OF O.L.89

15-03263-X



SPLITS/DEEDS PROCESSED

LORAIN COUNTY TAX MAP DEPARTMENT
226 MIDDLE AVE. ELYRIA, OHIO

SURVEYED BY: RICHARD D. CARLSON

CLOSURE: .01:10,000

MAP PAGE(S): 16-A

APPROVED BY: RRM DATE: 7-24-15

SCALE: 1"= 500 PRIOR INST.: DV XXXX/XXX