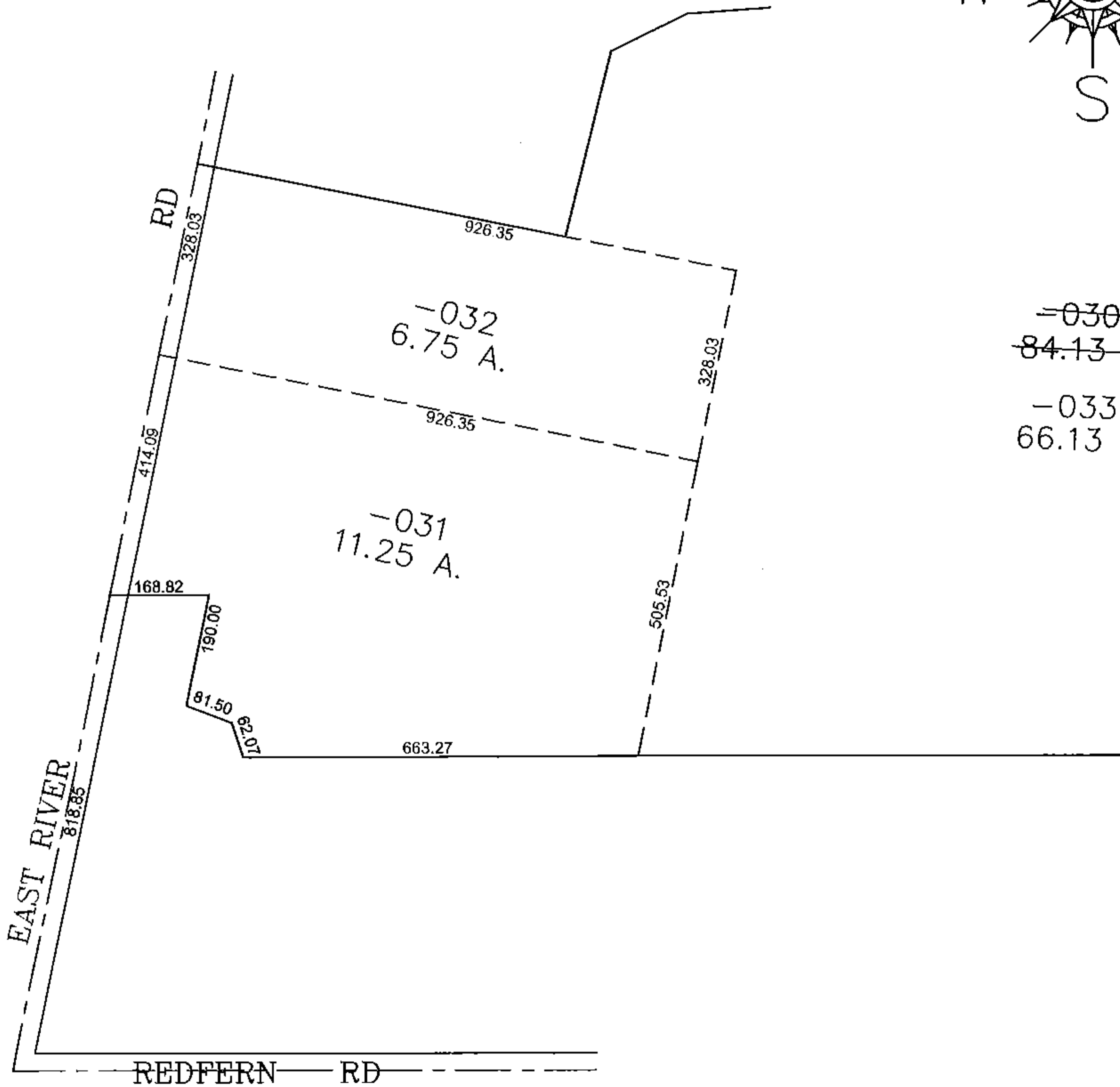
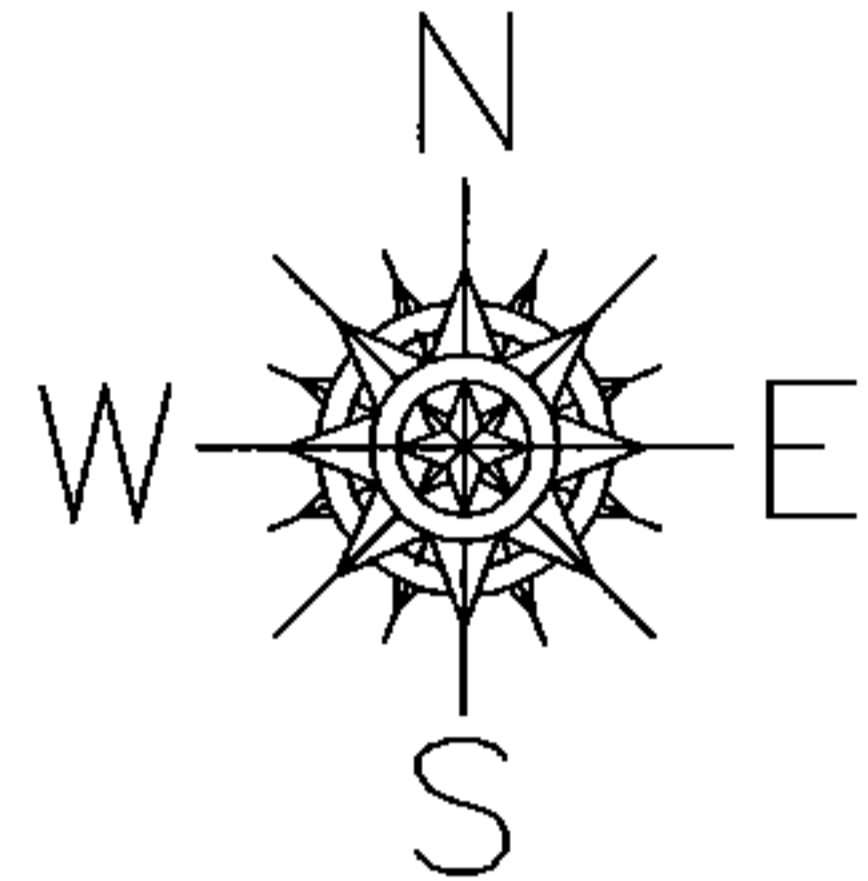


PARENT PARCEL: 12-00-021-105-030

CHILD PARCEL: 12-00-021-105-031 THRU -033

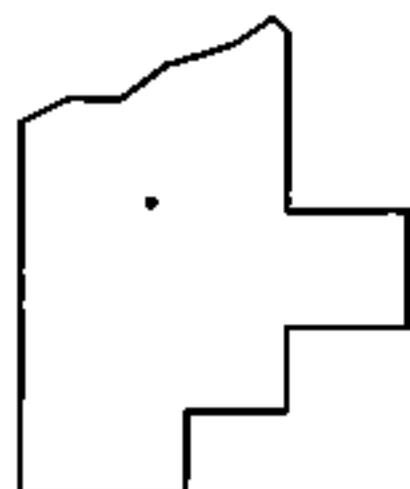
STARTING POINT: CENTERLINE OF EAST RIVER RD & REDFERN RD

14-03257



~~-030~~  
~~84.13 A.~~

-033  
66.13 A.



**SPLITS/DEEDS PROCESSED**

LORAIN COUNTY TAX MAP DEPARTMENT  
226 MIDDLE AVE. ELYRIA, OHIO

SURVEYED BY: GEORGE A HOFMANN

CLOSURE: 0.00 : 10.000

MAP PAGE(S): 12-00-021-A,B

APPROVED BY: JAH DATE: 5-28-2014

SCALE: 1" = 300 PRIOR INSTRUMENT: 20120434918