

PARENT PARCEL: ADD TO DUPLICATE

CHILD PARCEL: 06-24-045-900-001

STARTING POINT: CRESTHAVEN SUB. NO. 3, PLAT VOL. 22 PG. 55

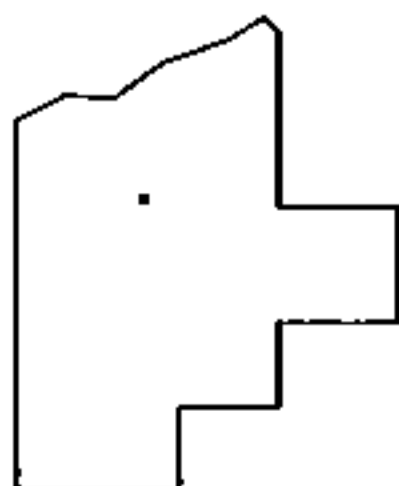
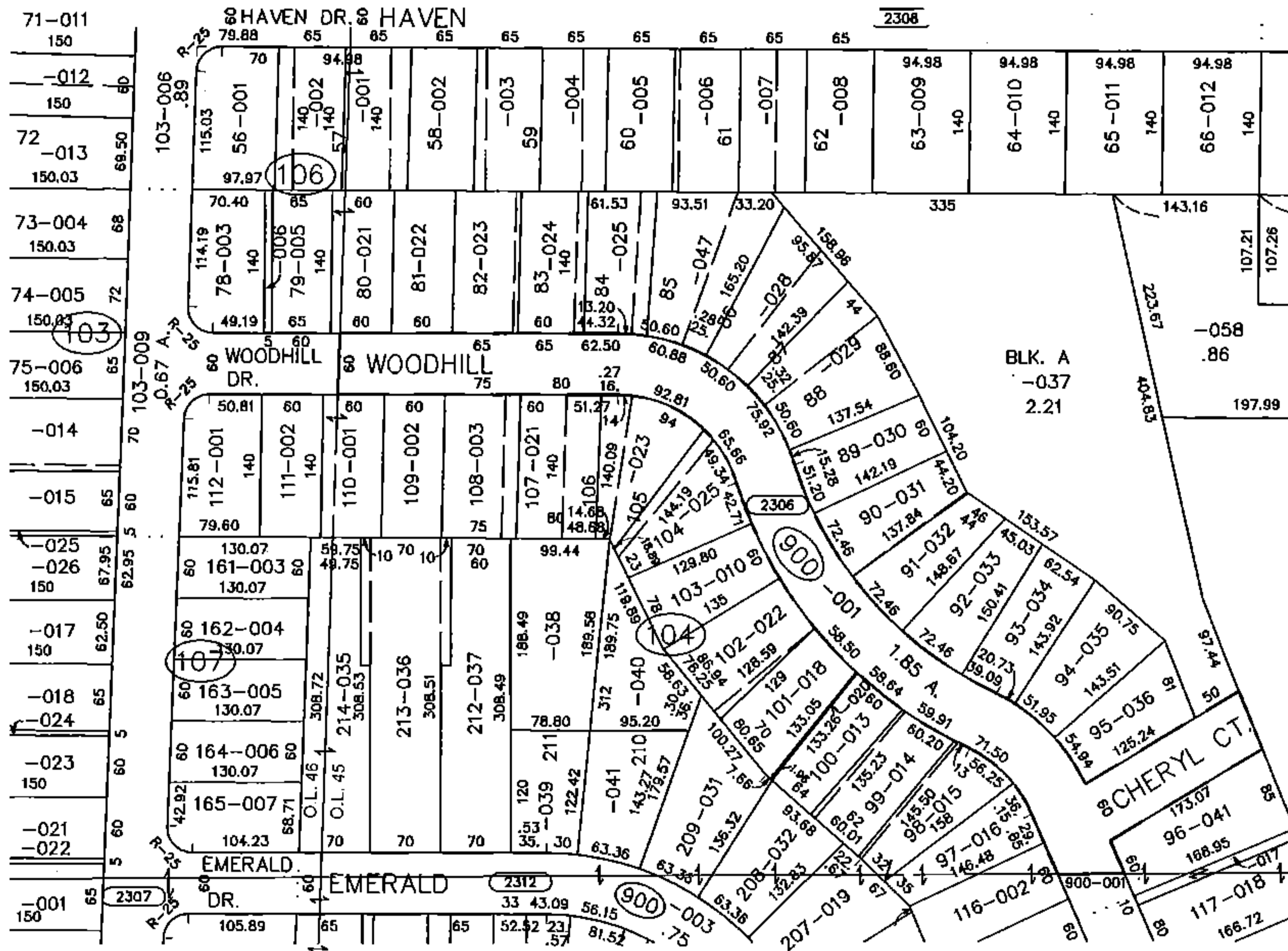
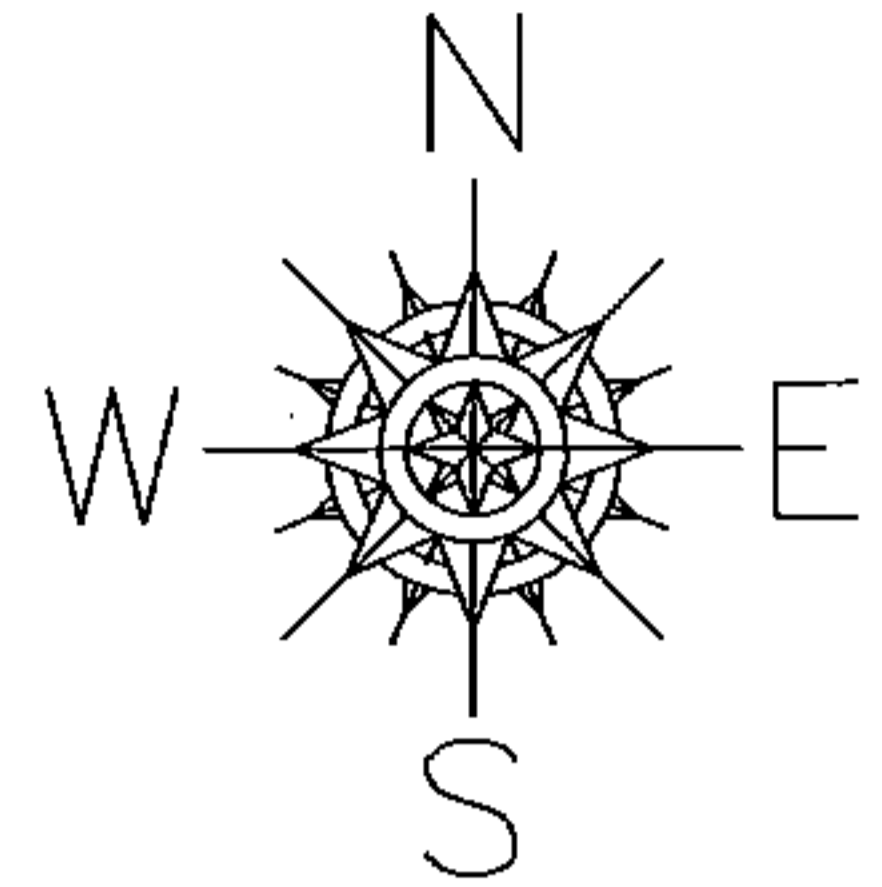
15-03256-A

# ADD TO DUPLICATE

06-24-045-900-001

1.85 A.

PER PLAT VOL. 22 PG. 55



**SPLITS/DEEDS PROCESSED**  
 LORAIN COUNTY TAX MAP DEPARTMENT  
 226 MIDDLE AVE. ELYRIA, OHIO

SURVEYED BY: RAY HOLLIS  
 CLOSURE: NA  
 MAP PAGE(S): 06-24-046  
 APPROVED BY: TJS DATE: 7/21/15  
 SCALE: 1" = 200' PRIOR INSTRUMENT: NA