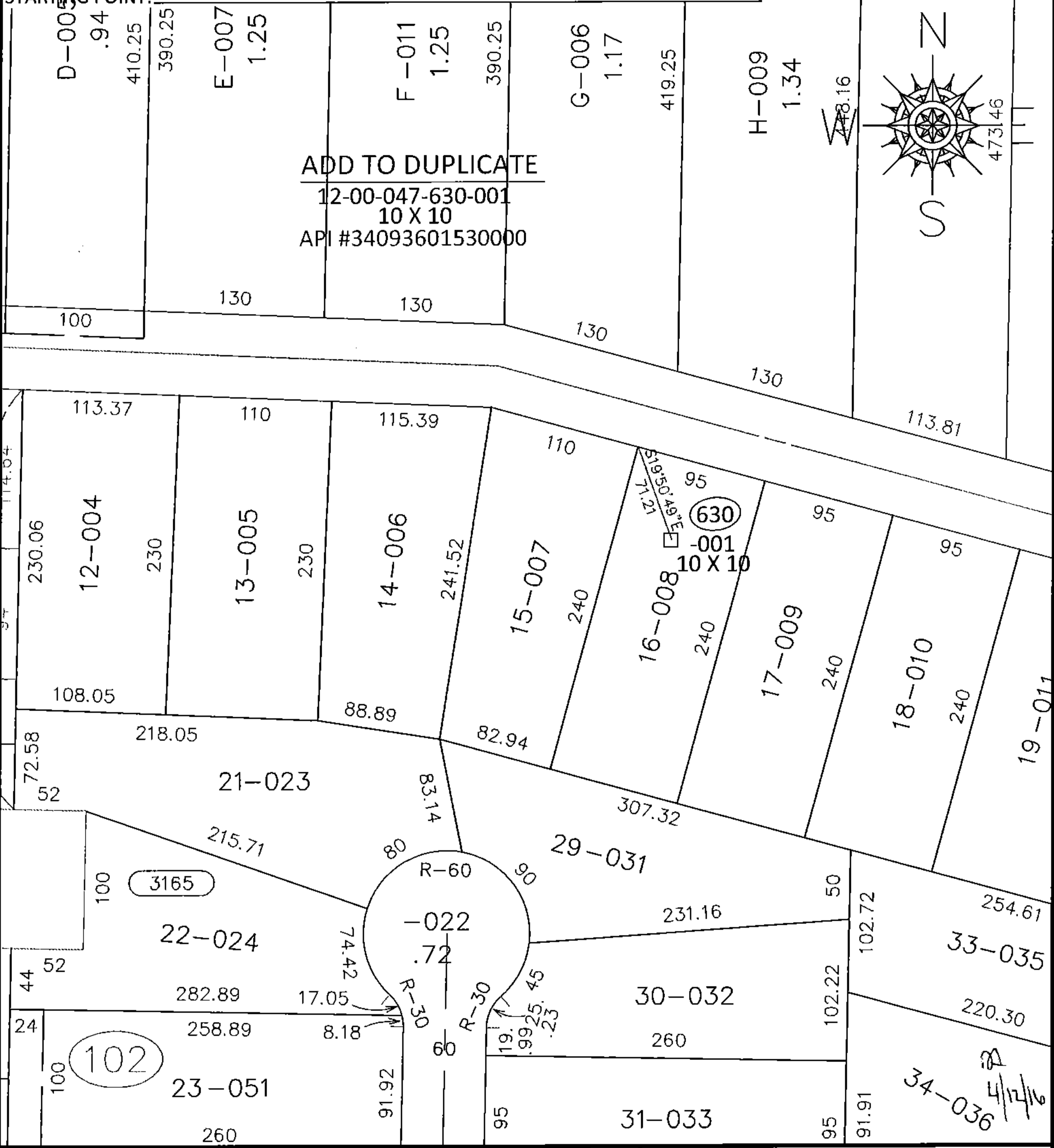


PARENT PARCEL: 12-00-047-102-008

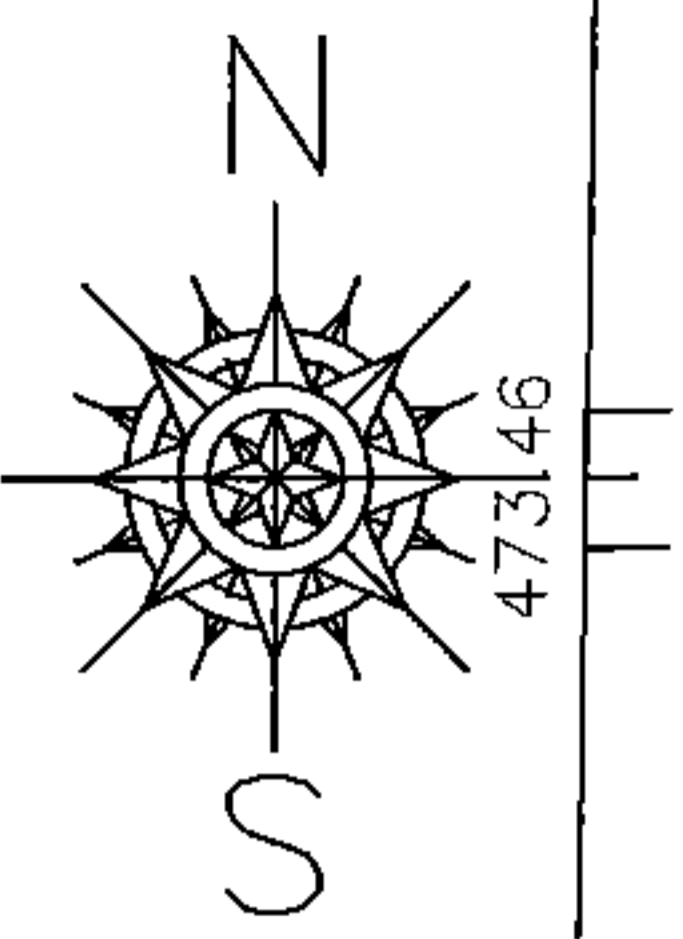
CHILD PARCEL: 12-00-047-630-001

15-03255-A

STARTING POINT:



ADD TO DUPLICATE
 12-00-047-630-001
 10 X 10
 API #34093601530000



SPLITS/DEEDS PROCESSED
 LORAIN COUNTY TAX MAP DEPARTMENT
 226 MIDDLE AVE. ELYRIA, OHIO

SURVEYED BY: _____
 CLOSURE: _____
 MAP PAGE(S): 12-00-047-A
 APPROVED BY: RRM DATE: 7-20-15
 SCALE: 1"= 100 PRIOR INST.: _____