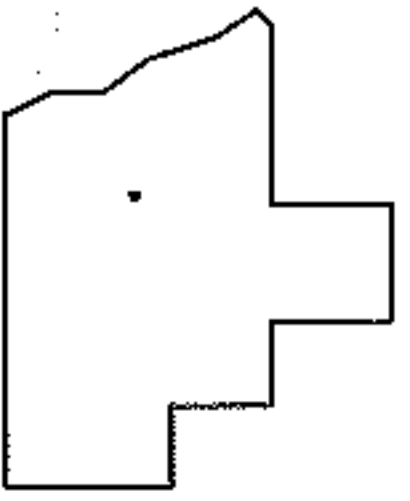
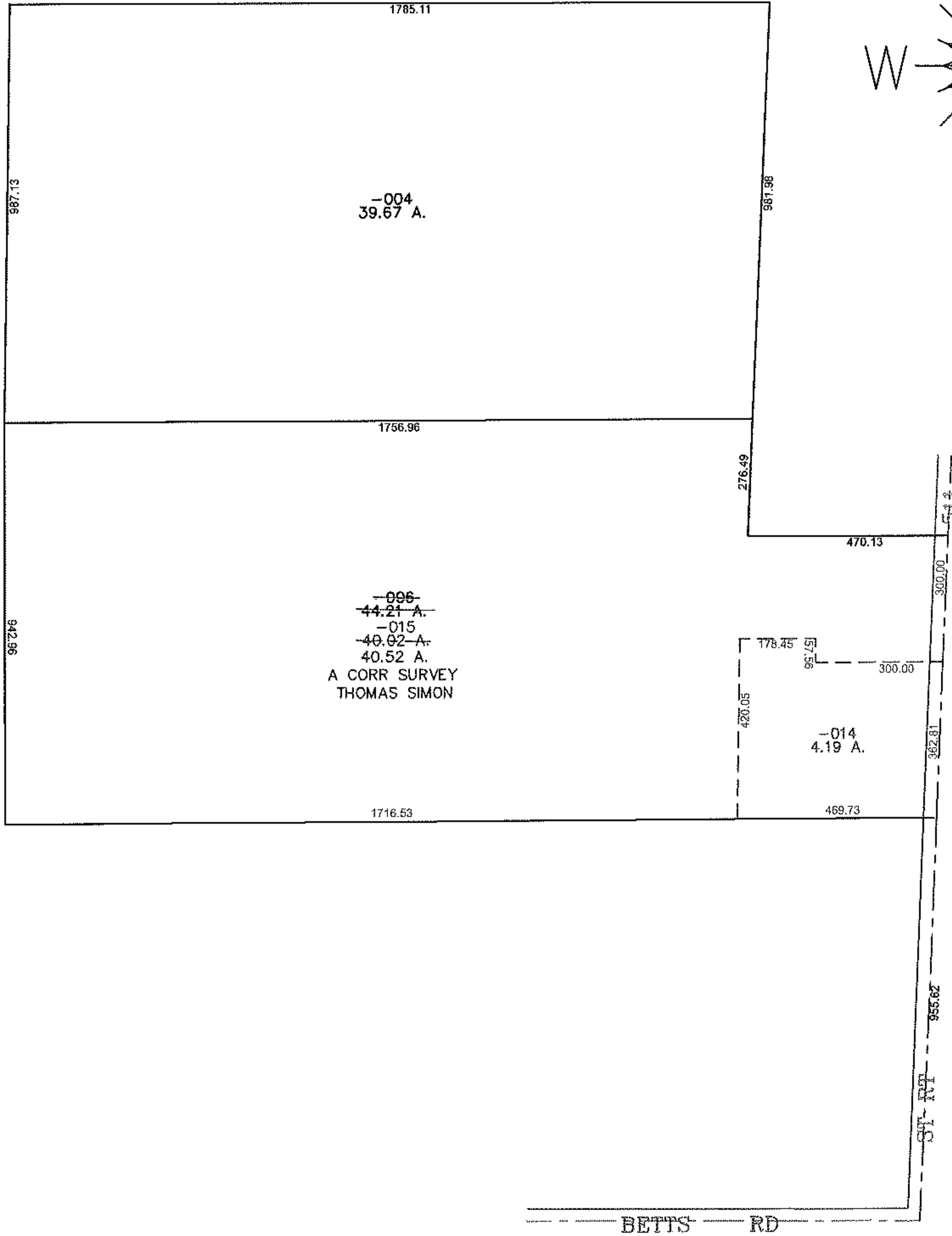


PARENT PARCEL: 13-09-033-000-006

SUBDIVISION PARCEL: 13-09-033-000-014, -015

STARTING POINT: CENTERLINE OF BETTS RD & ST RT 511

14-03254



SPLITS/DEEDS PROCESSED

LORAIN COUNTY TAX MAP DEPARTMENT
226 MIDDLE AVE. ELYRIA, OHIO

SURVEYED BY: THOMAS SIMON

CLOSURE: 0.00 : 10,000

MAP PAGE(S): 13-F

APPROVED BY: JAH DATE: 5-9-2014

SCALE: 1"= 400 PRIOR INST.: 20080240339