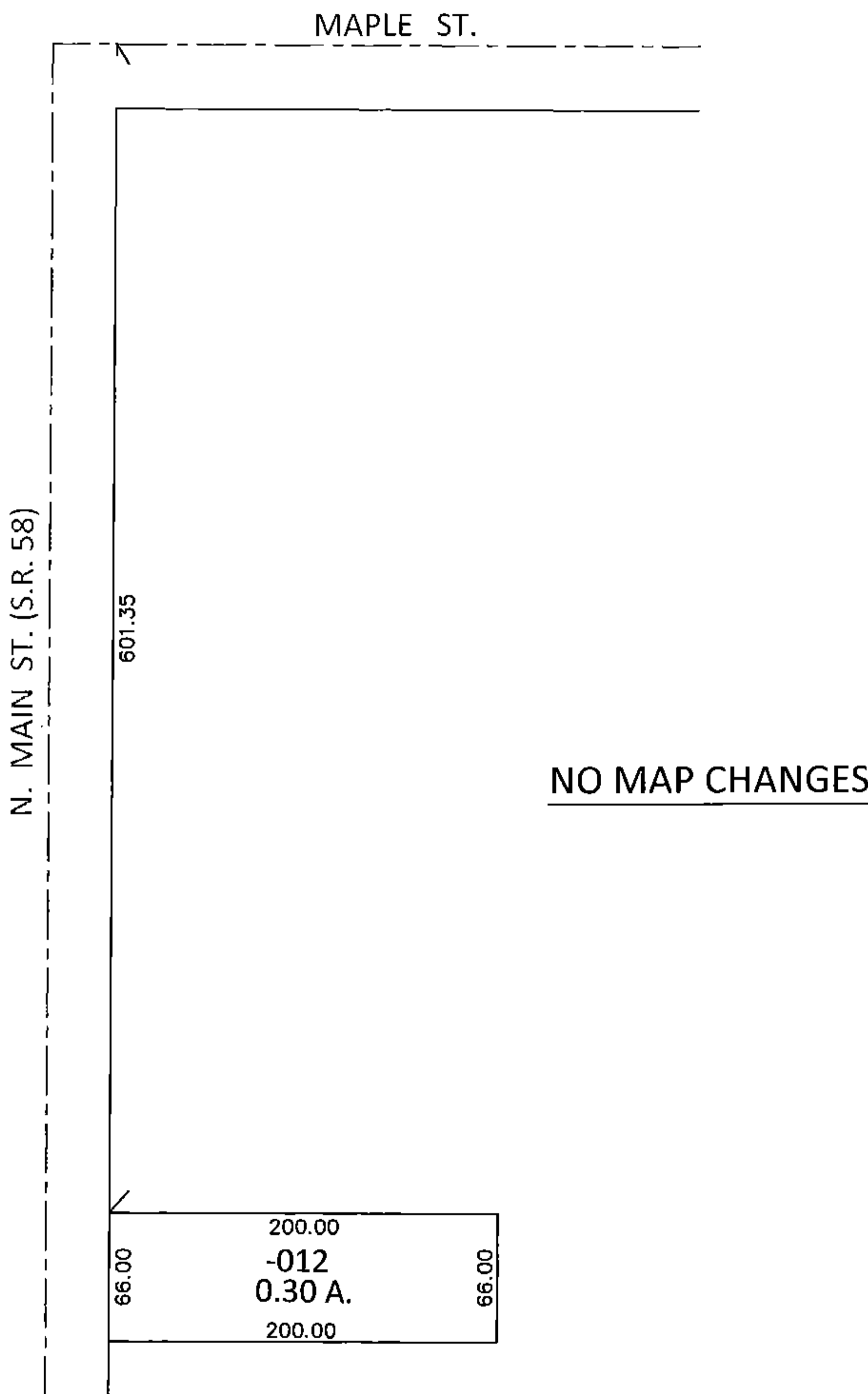
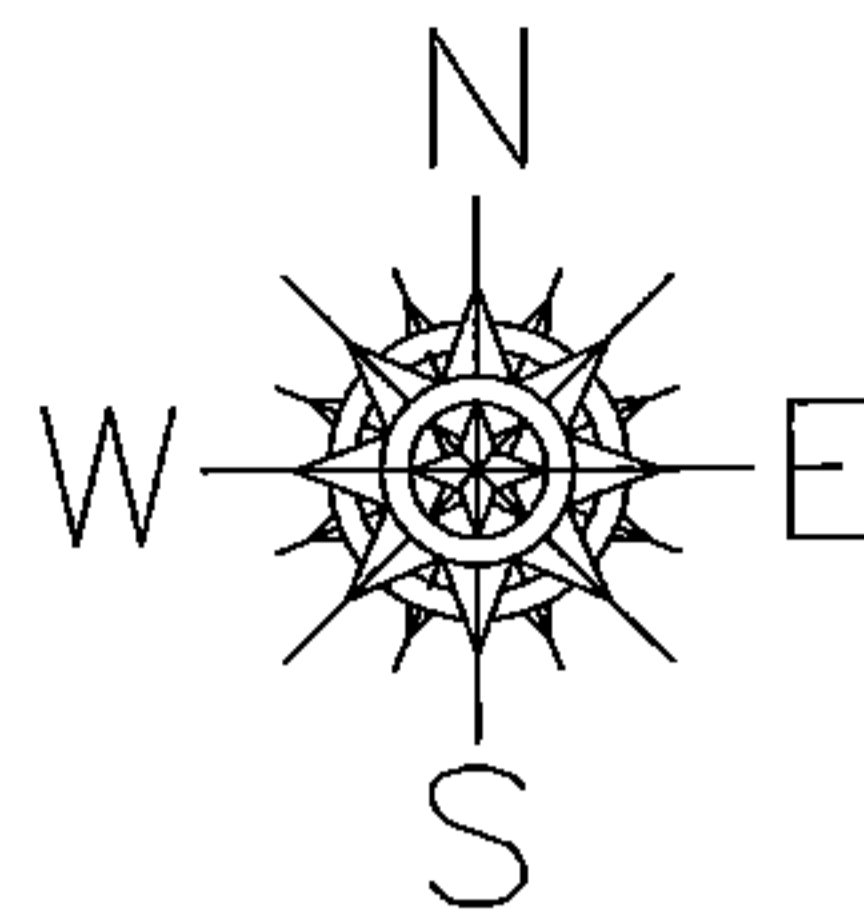


PARENT PARCEL: 18-00-021-101-012

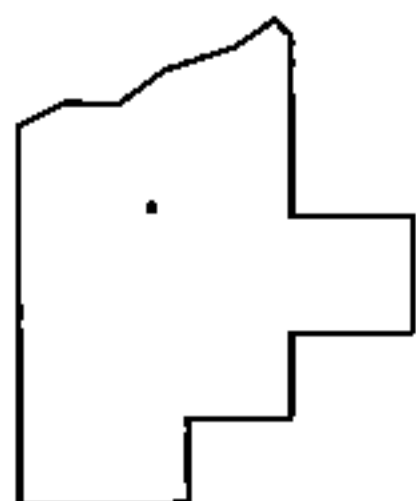
CHILD PARCEL:

STARTING POINT: INTERSECTION OF C/L OF MAPLE ST. AND EAST LINE OF S.R.58

15-03249-D



NO MAP CHANGES



SPLITS/DEEDS PROCESSED

LORAIN COUNTY TAX MAP DEPARTMENT
226 MIDDLE AVE. ELYRIA, OHIO

SURVEYED BY: THOMAS M. SNEZEK

CLOSURE: .00:10,000

MAP PAGE(S): 18-00-021-A

APPROVED BY: RRM DATE: 7-20-15

SCALE: 1"= 100 PRIOR INST.: 20140527470