

PARENT PARCEL: 09-00-106-000-058

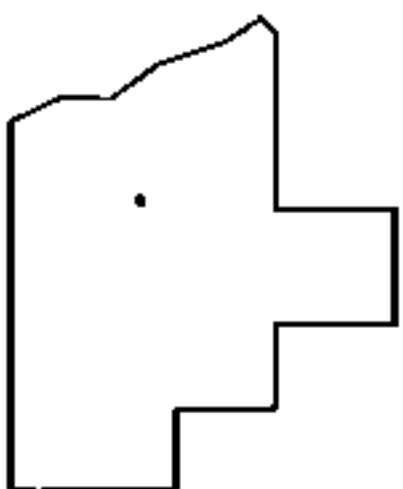
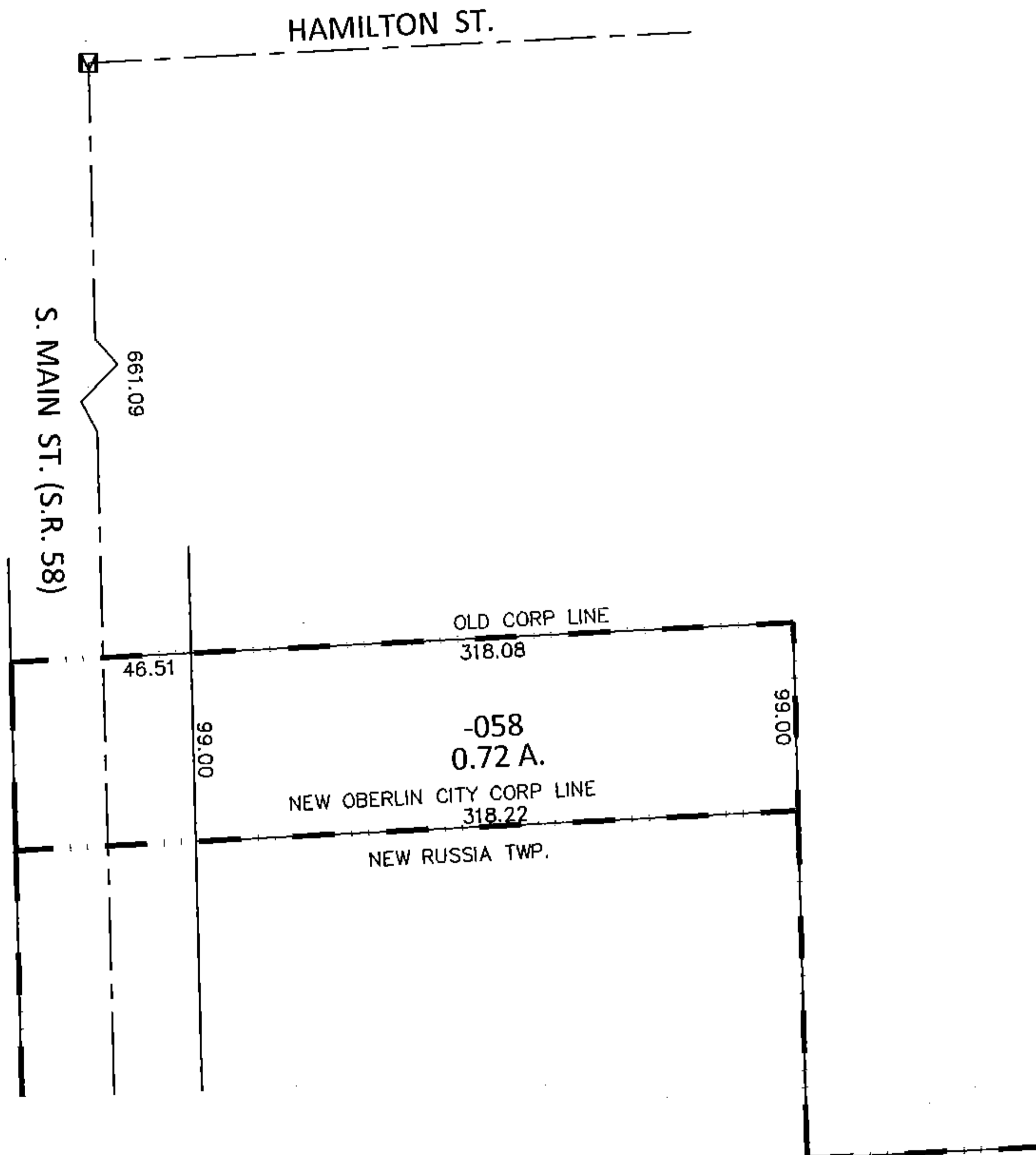
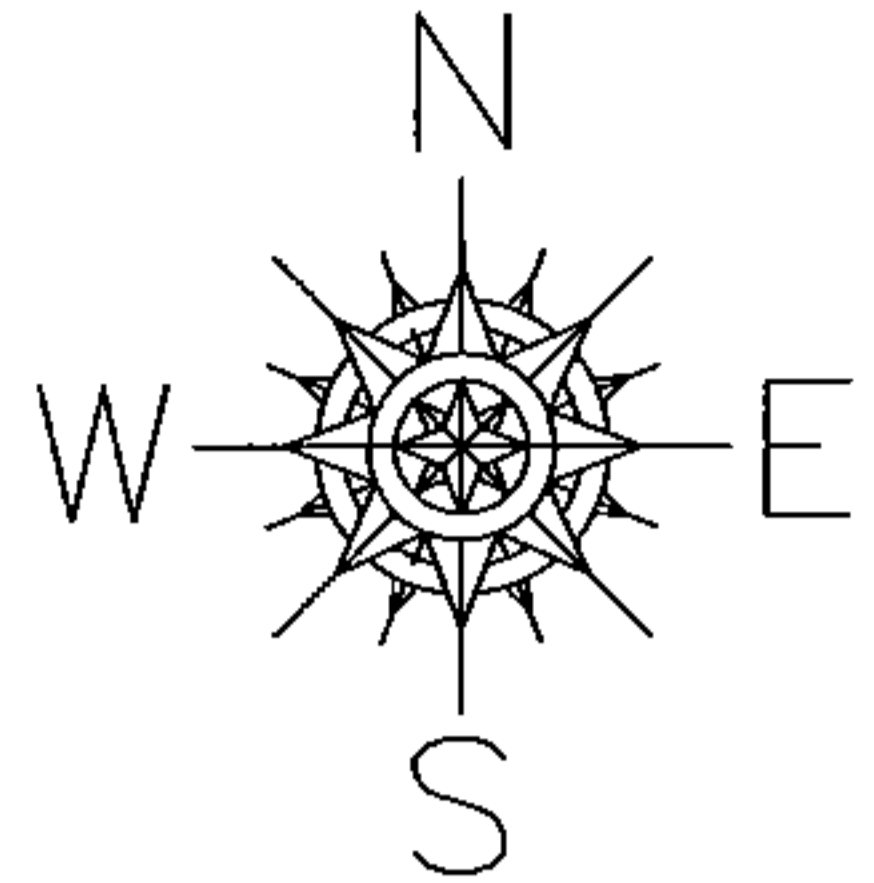
CHILD PARCEL: _____

STARTING POINT: AT A MON BOX AT THE INTERSECTION OF C/L OF HAMILTON ST. AND C/L OF S.R.58

15-03248-A

OBERLIN CITY ANNEXATION

RESOLUTION # 15-328



SPLITS/DEEDS PROCESSED

LORAIN COUNTY TAX MAP DEPARTMENT
226 MIDDLE AVE. ELYRIA, OHIO

SURVEYED BY: THOMAS A. SIMON

CLOSURE: .00:10,000

MAP PAGE(S): 9-00-106-A

APPROVED BY: TJS DATE: 7/17/15

SCALE: 1"=100 PRIOR INST.: 20120407040