

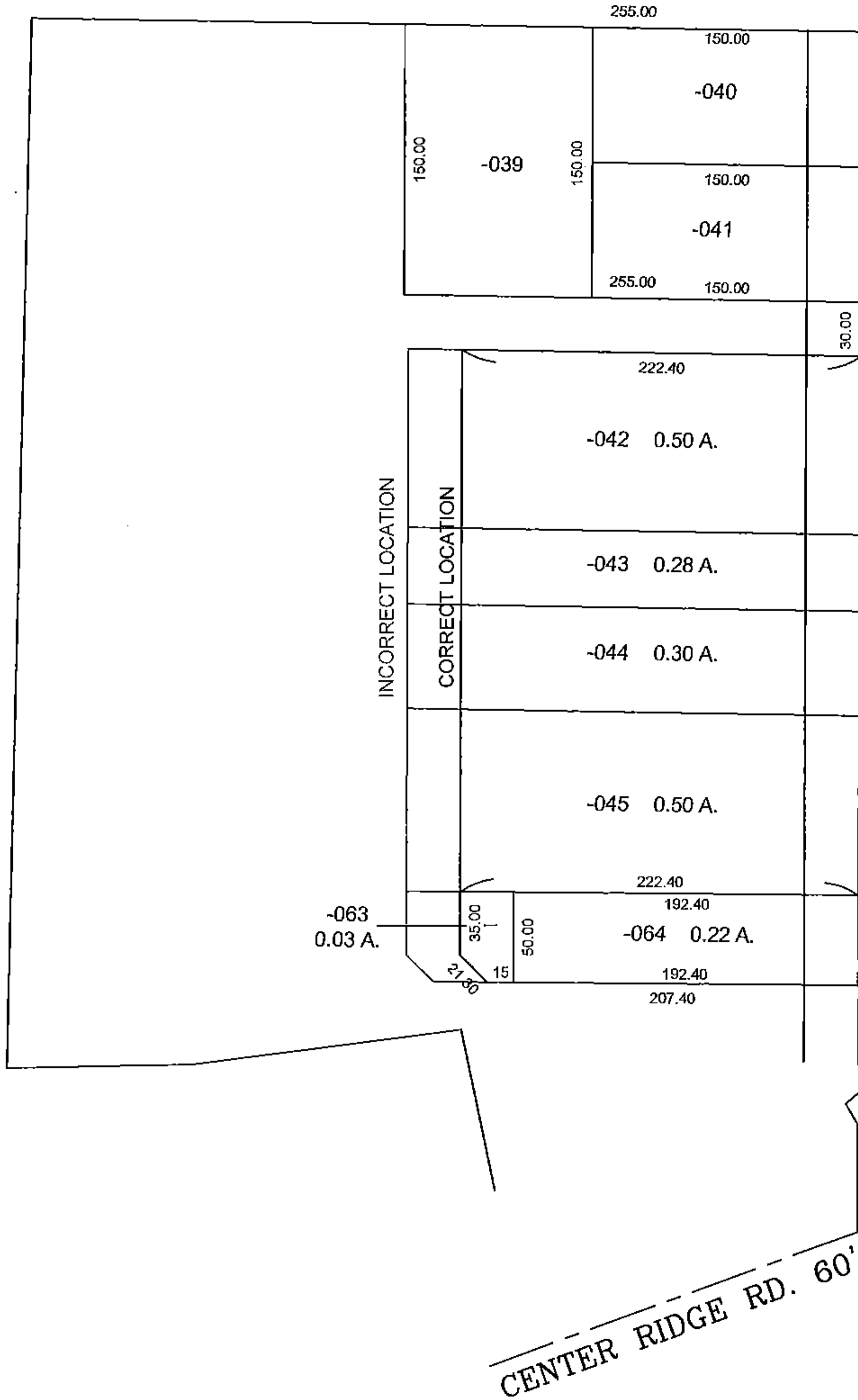
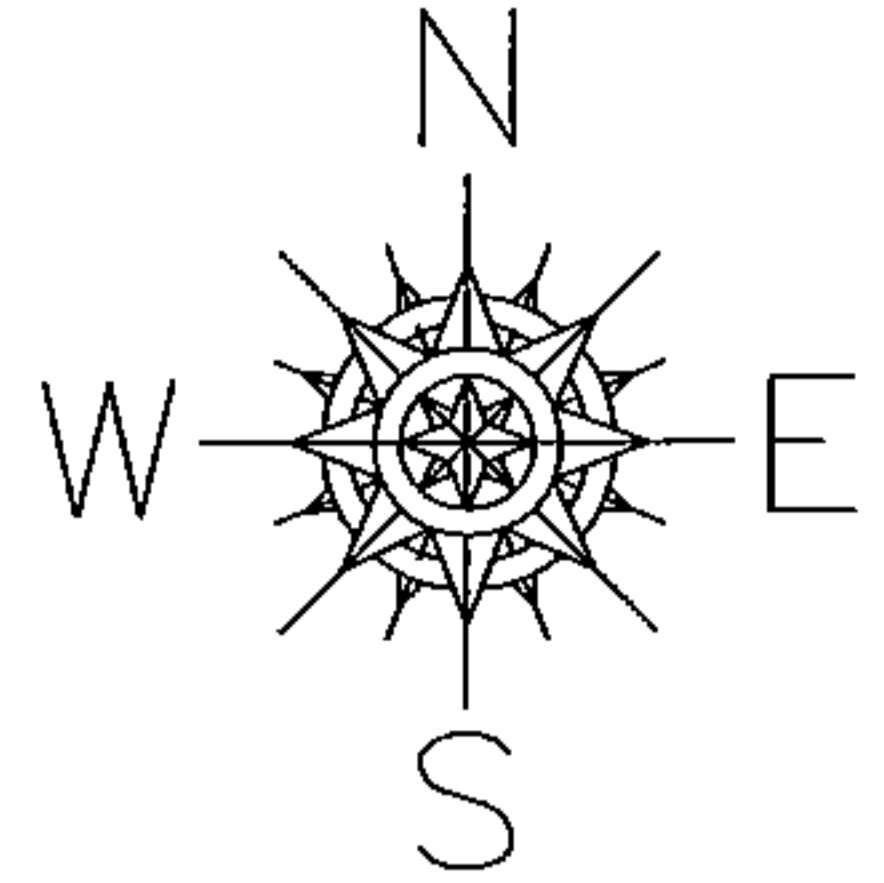
PARENT PARCEL: 07-00-028-102-042 THRU -045 & -063, -064

CHILD PARCEL: XX-XX-XXX-XXX-XXX

STARTING POINT: XXXXXX

15-03243-C

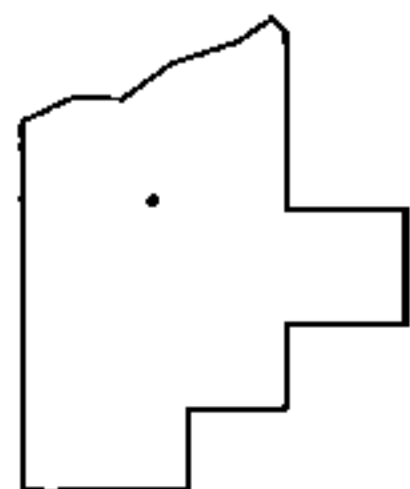
MAP CORRECTION ONLY



AVON-BELDON RD. (S.R. 83)

PRIOR INSTRUMENT: 20120437498

PRIOR INSTRUMENT: 20040011257



SPLITS/DEEDS PROCESSED

LORAIN COUNTY TAX MAP DEPARTMENT
226 MIDDLE AVE. ELYRIA, OHIO

SURVEYED BY: J.W. WARDEN & G. PENFOUND
CLOSURE: NA
MAP PAGE(S): 07-00-028
APPROVED BY: TJS DATE: 7/2/15
SCALE: 1" = 100'