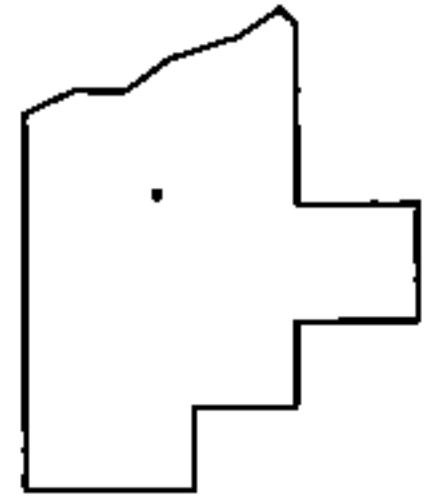
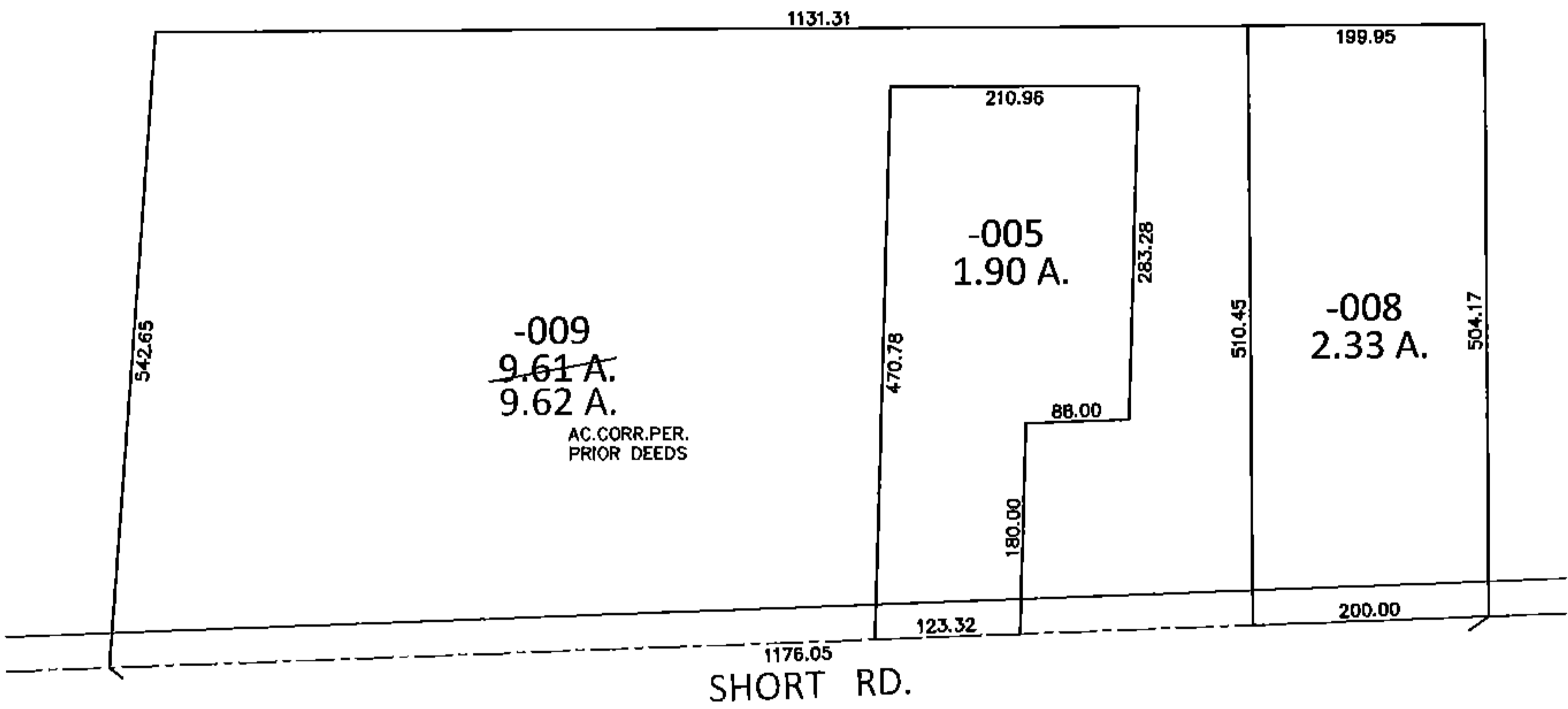
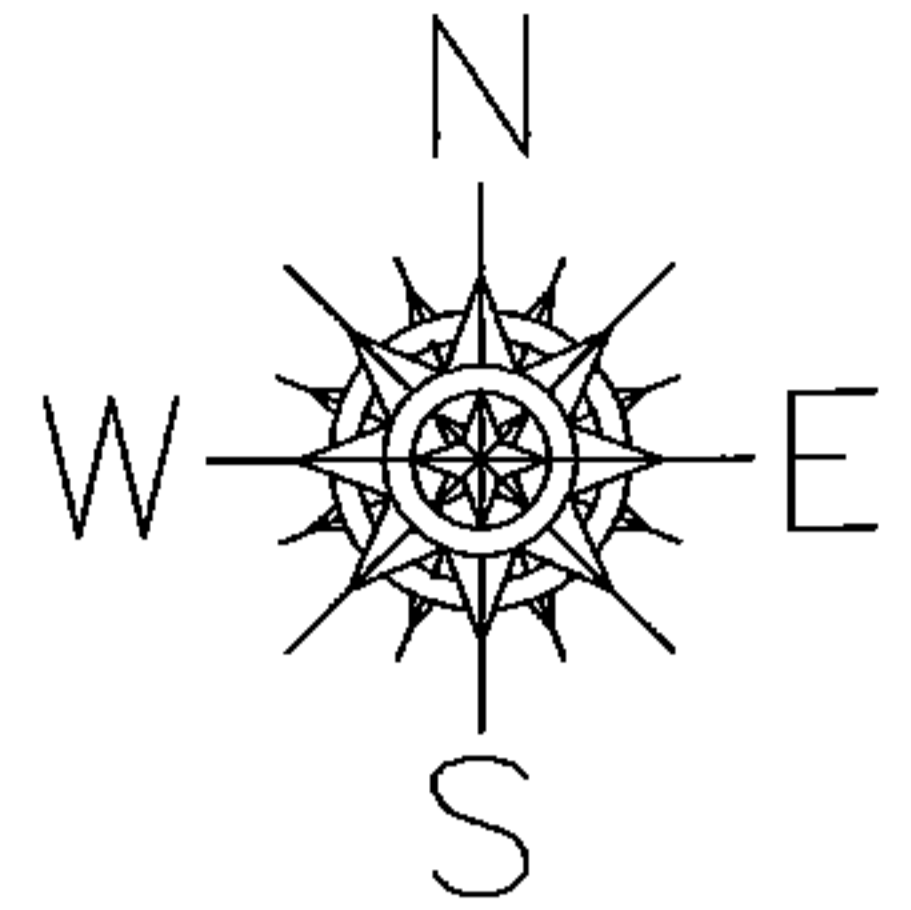


PARENT PARCEL: 19-06-040-000-009

CHILD PARCEL: _____

STARTING POINT: _____

15-03237-A



SPLITS/DEEDS PROCESSED

LORAIN COUNTY TAX MAP DEPARTMENT
226 MIDDLE AVE. ELYRIA, OHIO

SURVEYED BY: N/A

CLOSURE: .01:10,000

MAP PAGE(S): 19-A

APPROVED BY: RRM DATE: 6-24-15

SCALE: 1"= 200 PRIOR INST.: 20150548690