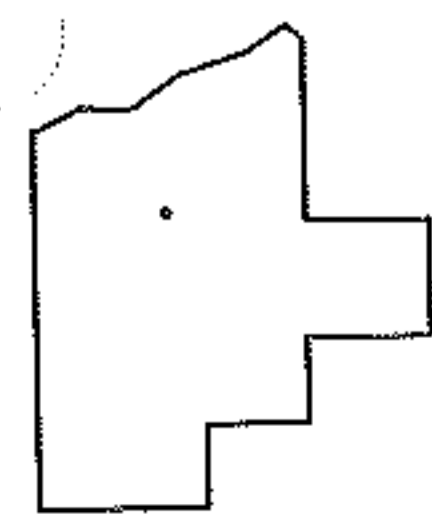
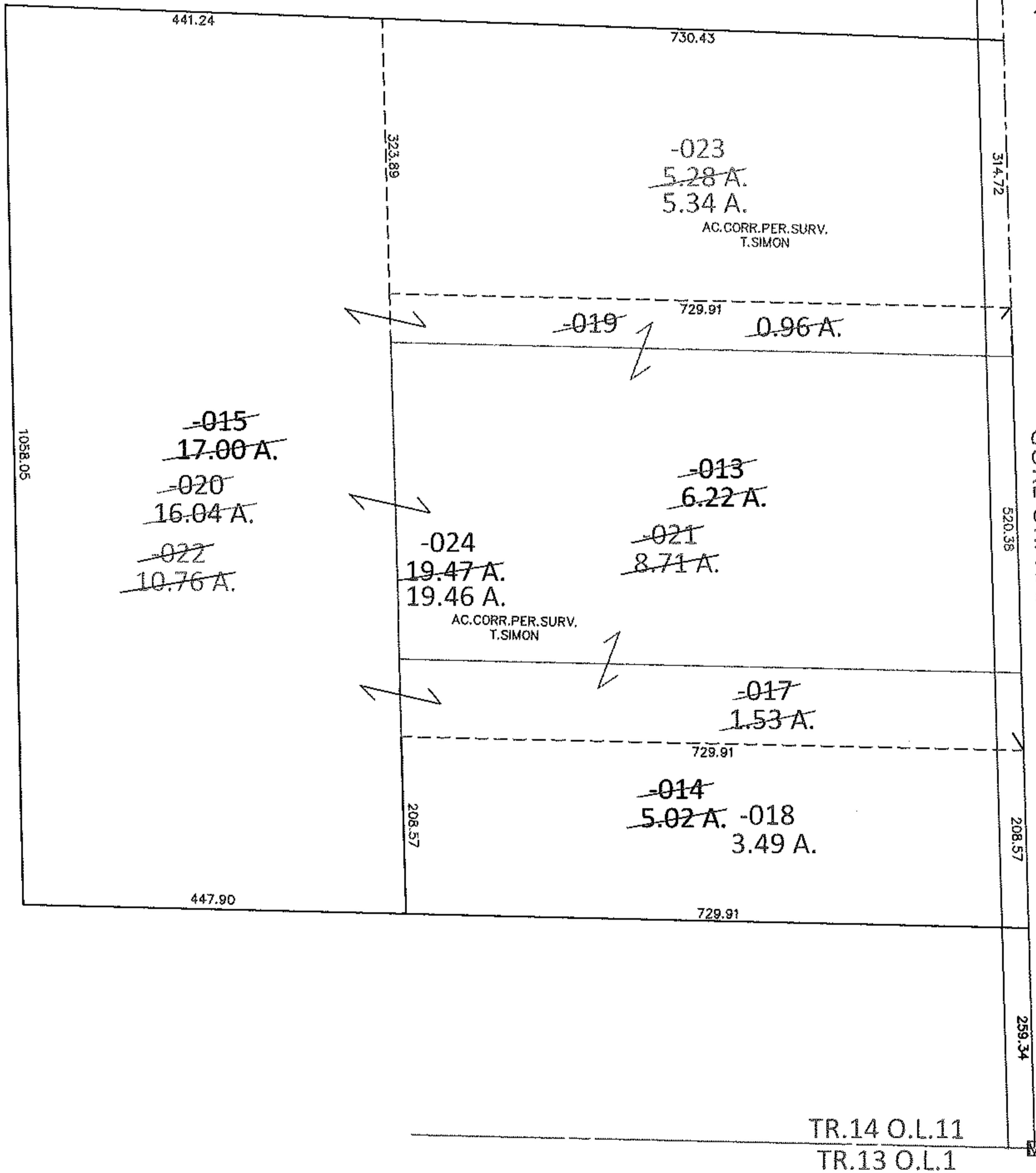
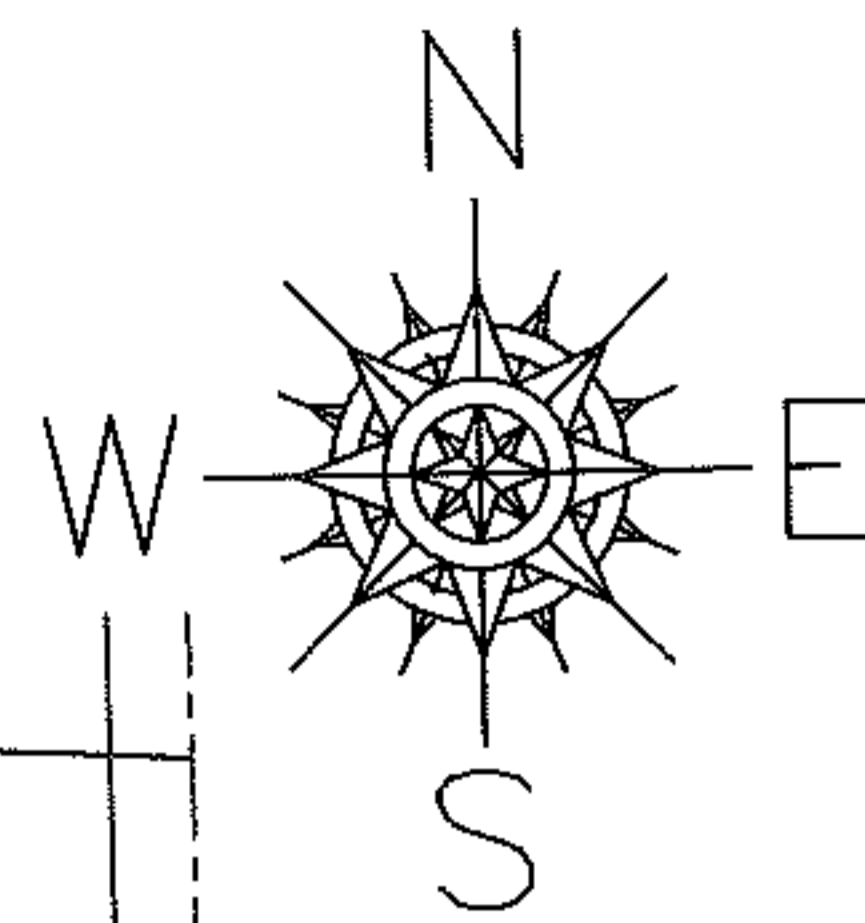


PARENT PARCEL: 08-14-011-000-013, -014, -015
 CHILD PARCEL: 08-14-011-000-017 THRU -024
 STARTING POINT: AT A MON BOX AT THE SOUTHEAST CORNER OF TR. 14 O.L.11

14-03236



SPLITS/DEEDS PROCESSED
 LORAIN COUNTY TAX MAP DEPARTMENT
 226 MIDDLE AVE. ELYRIA, OHIO

SURVEYED BY: THOMAS A. SIMON
 CLOSURE: .01:10,000
 MAP PAGE(S): 8-E
 APPROVED BY: RRM DATE: 3-24-14
 SCALE: 1" = 200 PRIOR INST.: OR 1140/460