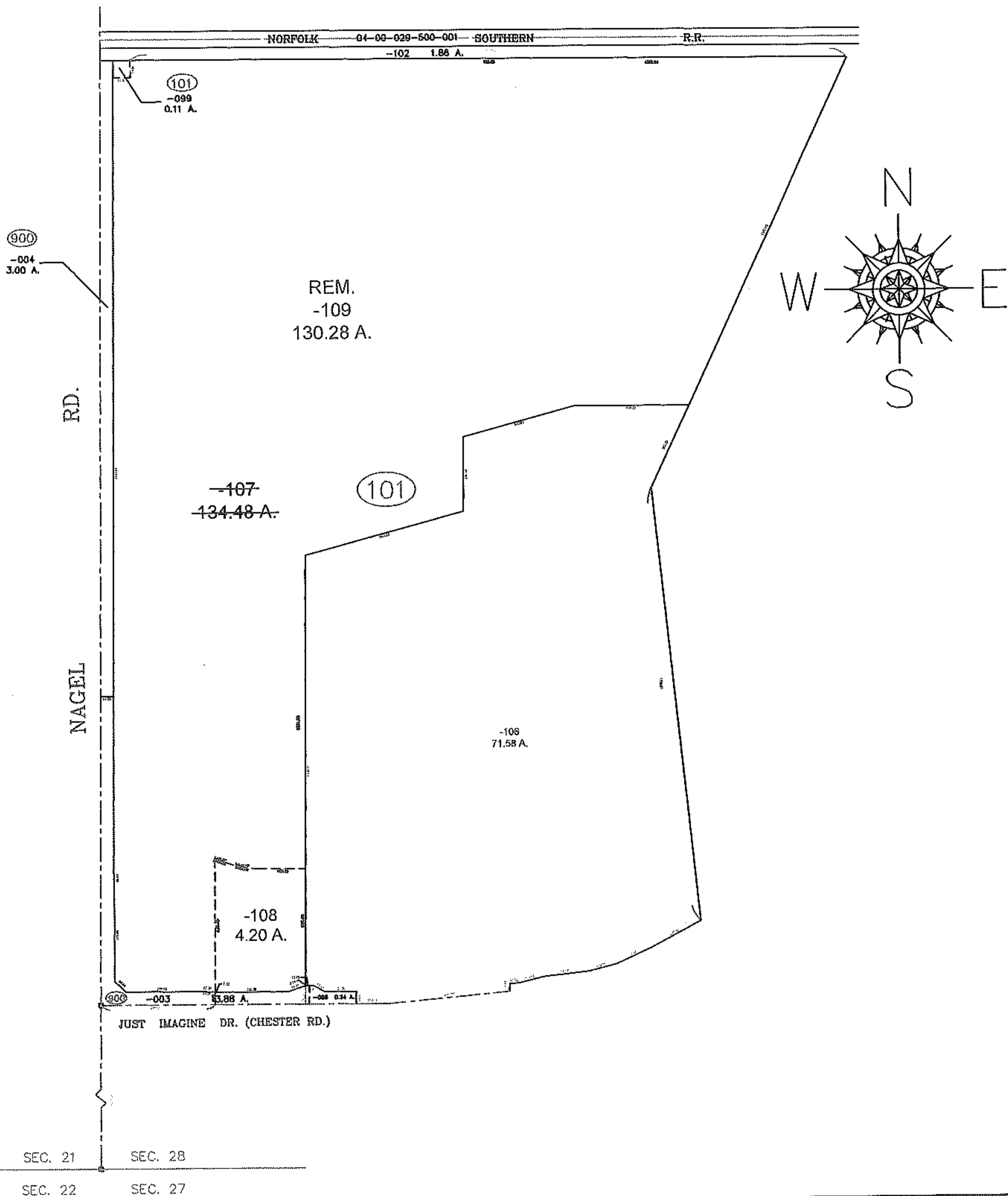


PARENT PARCEL: 04-00-028-101-107

CHILD PARCEL: 04-00-028-101-108 & -109

STARTING POINT: MON. BOX AT THE SOUTHWEST CORNER OF SECTION NO.28

14-03235



SPLITS/DEEDS PROCESSED

LORAIN COUNTY TAX MAP DEPARTMENT  
226 MIDDLE AVE. ELYRIA, OHIO

SURVEYED BY: CHRISTOPHER J. TOMKO

CLOSURE: .01:10,000

MAP PAGE(S): 4-00-028

APPROVED BY: TJS DATE: 3/21/14

SCALE: 1"= 600 PRIOR INST.: 20130482288