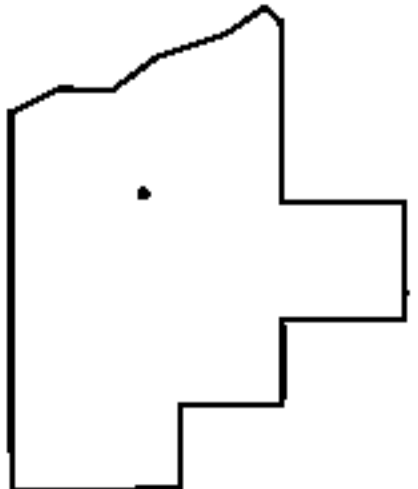
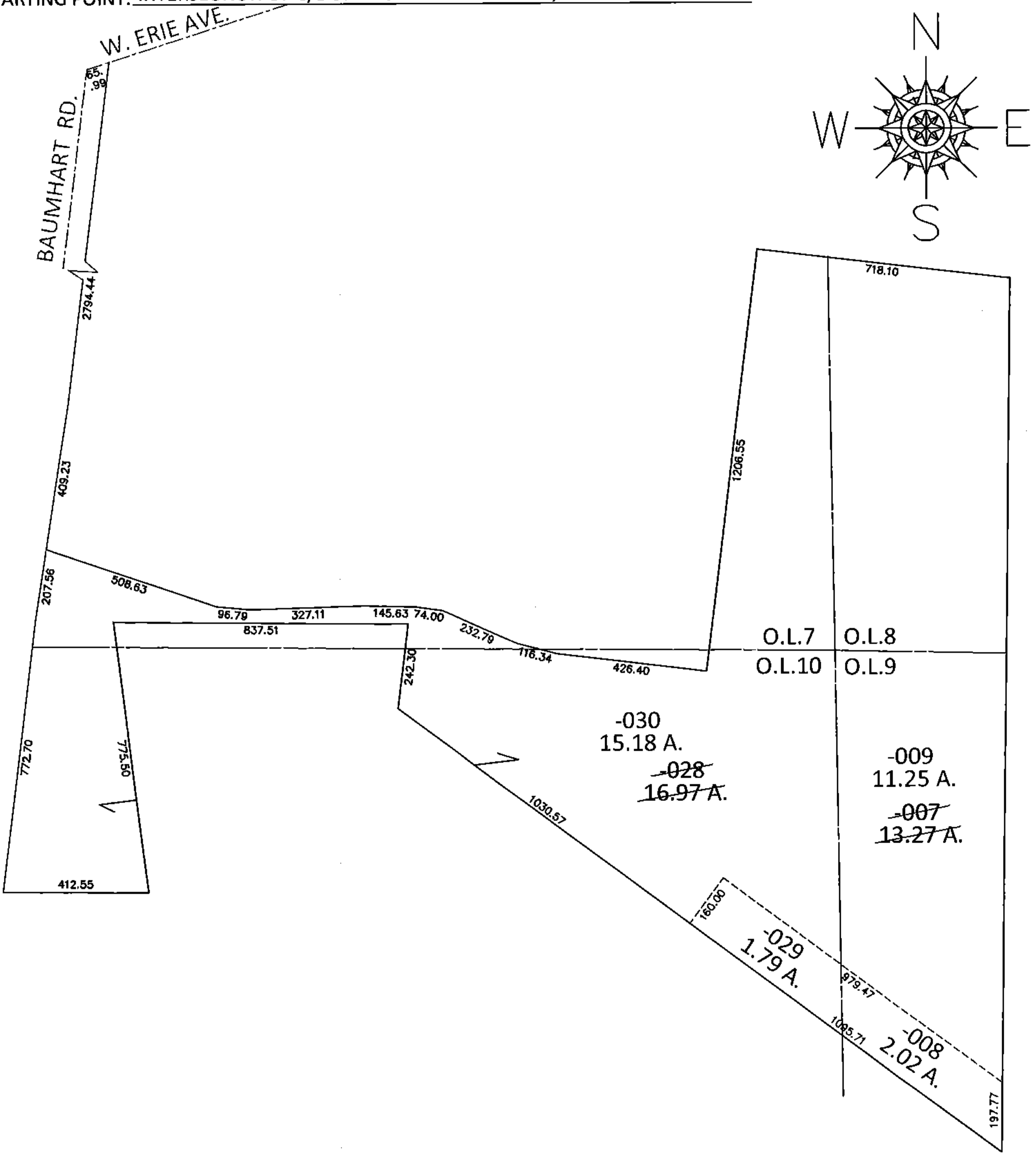


PARENT PARCEL: 01-00-009-000-007, 01-00-010-000-028
 CHILD PARCEL: 01-00-009-000-008, -009, 01-00-010-000-029, -030
 STARTING POINT: INTERSECTION OF C/L OF BAUMHART RD. AND C/L OF W.ERIE AVE.

14-03229



SPLITS/DEEDS PROCESSED
 LORAIN COUNTY TAX MAP DEPARTMENT
 226 MIDDLE AVE. ELYRIA, OHIO

SURVEYED BY: JOHN R. ALBAN
 CLOSURE: .01:10,000
 MAP PAGE(S): 1-D
 APPROVED BY: RRM DATE: 9-4-14
 SCALE: 1"= 400 PRIOR INST.: 20090300044