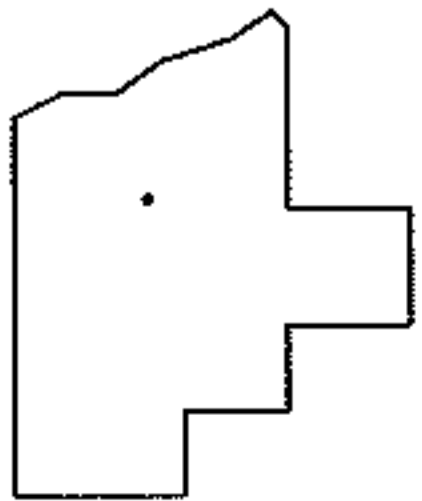
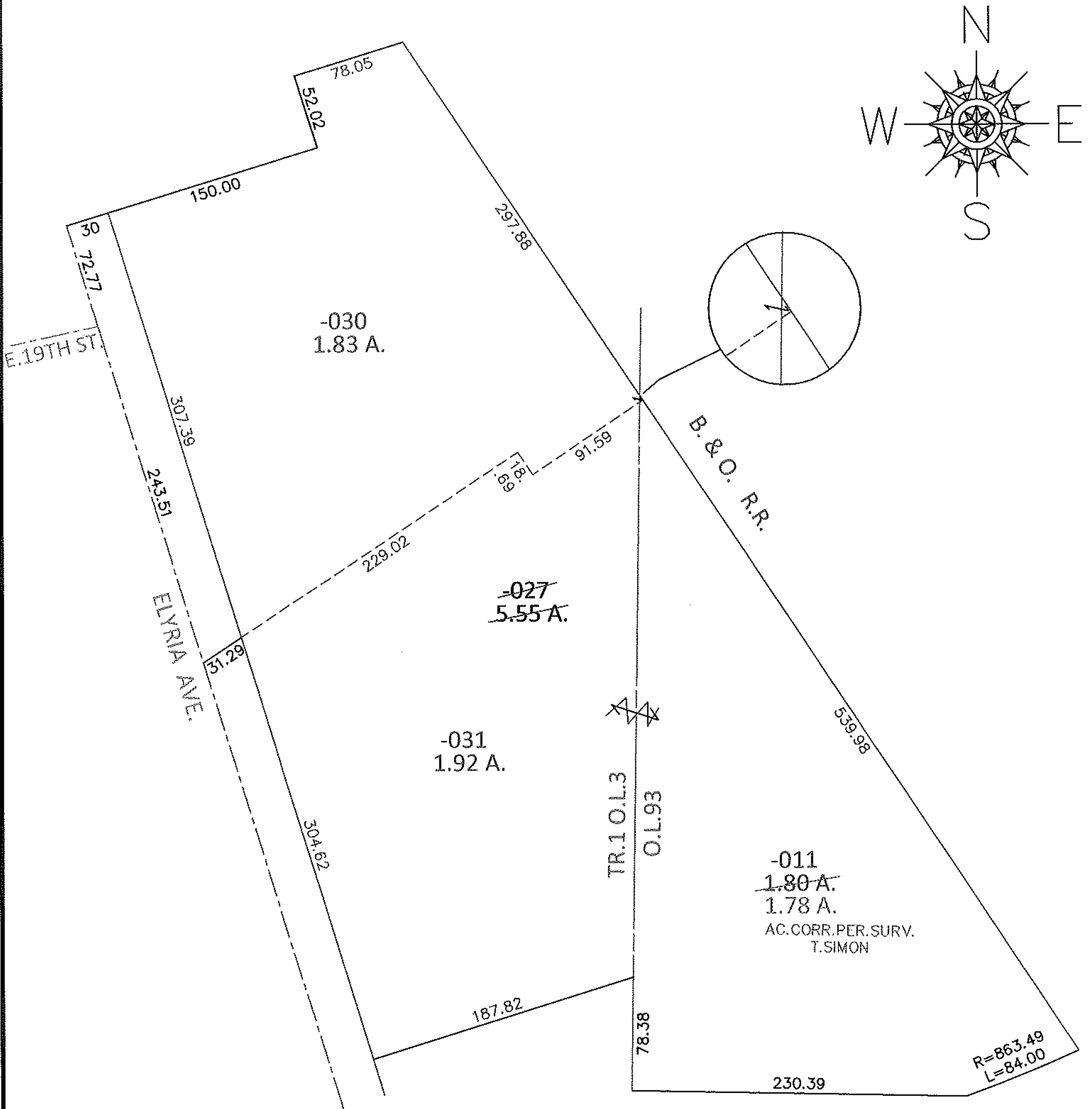


PARENT PARCEL: 02-01-003-159-027

CHILD PARCEL: 02-00-093-102-011, 02-01-003-159-030, -031

STARTING POINT: INTERSECTION OF C/L OF ELYRIA AVE. AND C/L OF E. 19TH ST.

14-03228



SPLITS/DEEDS PROCESSED

LORAIN COUNTY TAX MAP DEPARTMENT
226 MIDDLE AVE. ELYRIA, OHIO

SURVEYED BY: THOMAS A. SIMON

CLOSURE: .01:10,000

MAP PAGE(S): 2-01-003-H, 2-00-093-B

APPROVED BY: RRM DATE: 2-19-14

SCALE: 1"= 100 PRIOR INST.: 19980532442