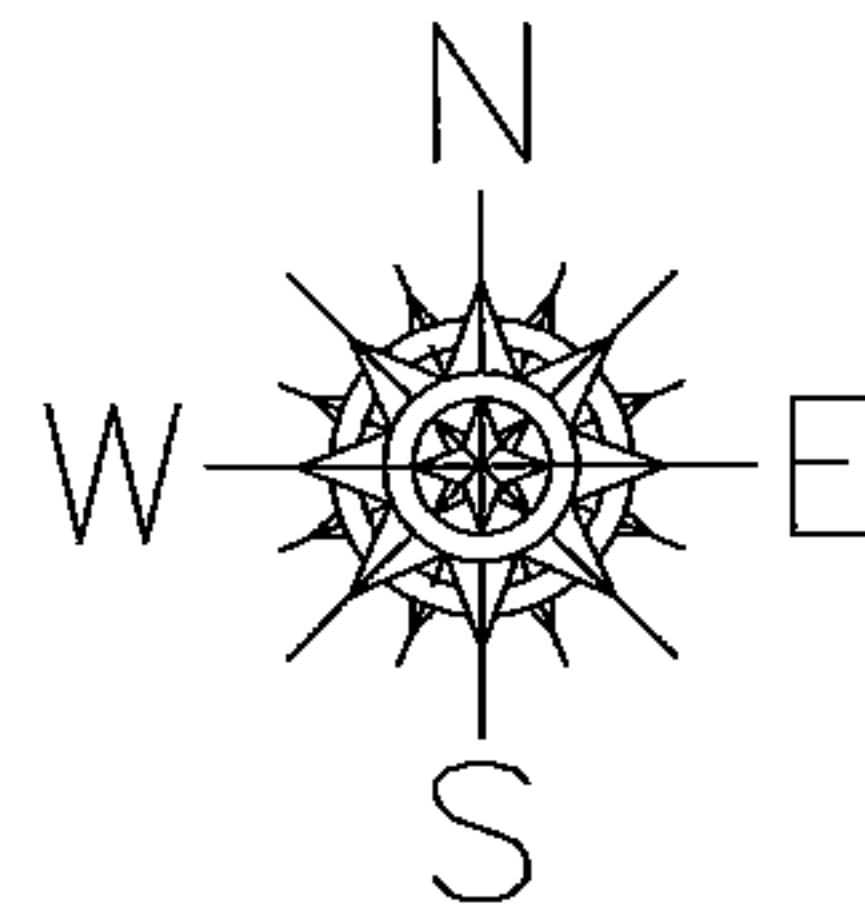


PARENT PARCEL: 03-00-107-101-057

CHILD PARCEL:

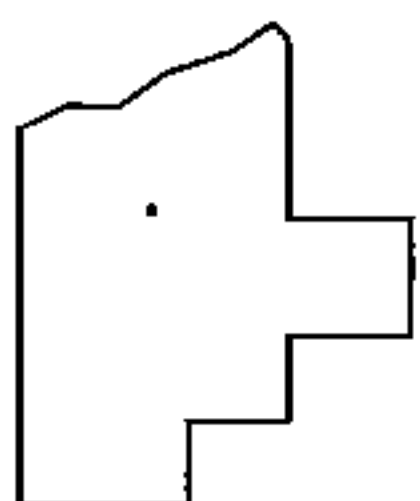
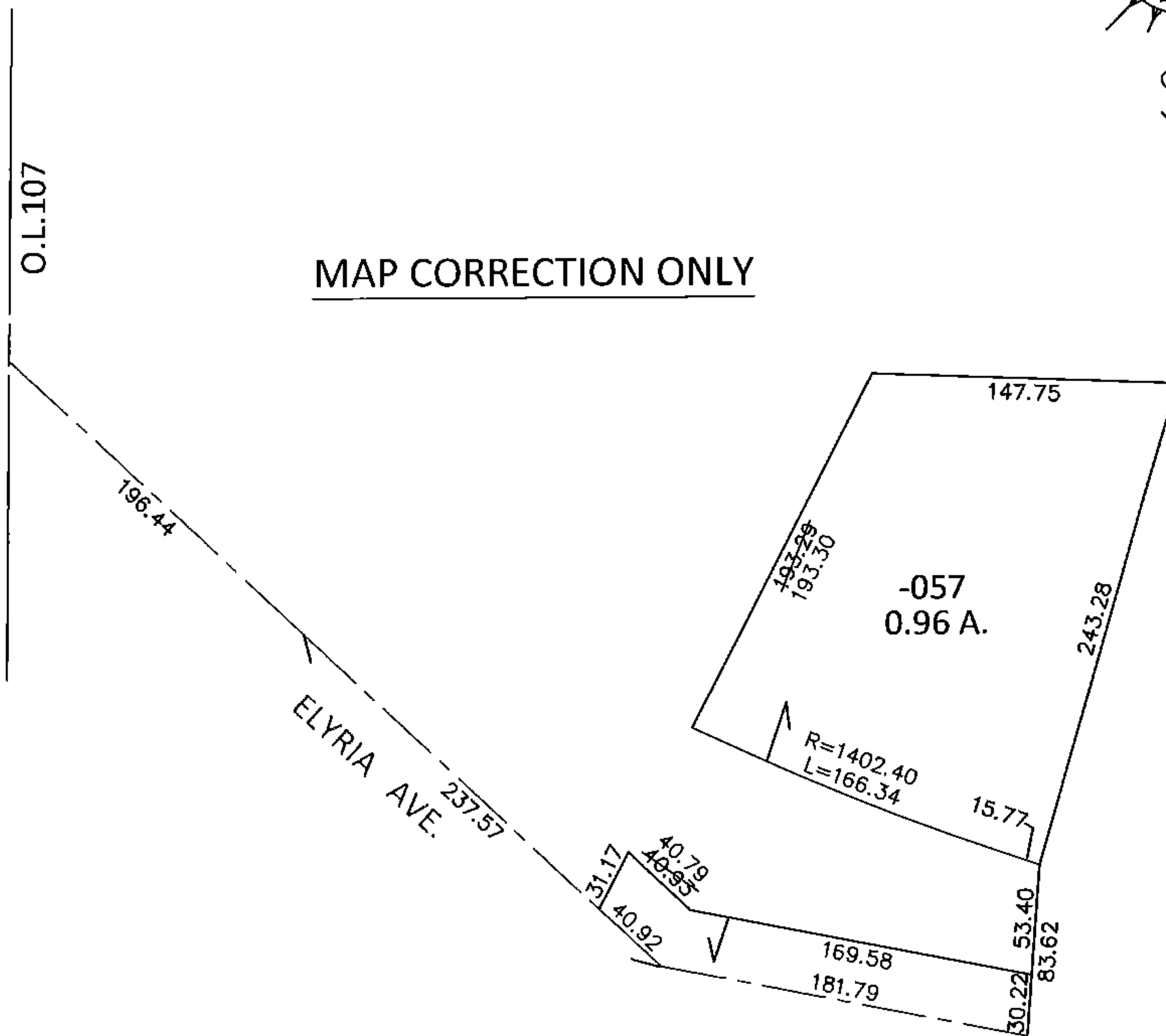
STARTING POINT: INTERSECTION OF C/L OF ELYRIA AVE. AND WEST LINE OF O.L.107

15-03228-D



O.L.108
O.L.107

MAP CORRECTION ONLY



SPLITS/DEEDS PROCESSED

LORAIN COUNTY TAX MAP DEPARTMENT
226 MIDDLE AVE. ELYRIA, OHIO

SURVEYED BY: PHILLIP A. ROSEBECK

CLOSURE: .01:10,000

MAP PAGE(S): 3-00-107-A

APPROVED BY: RRM DATE: 6-10-15

SCALE: 1"= 100 PRIOR INST.: OR 144/934