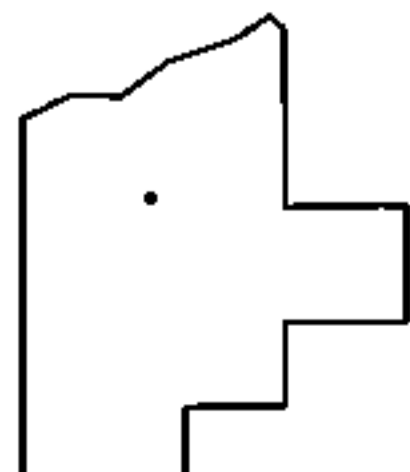
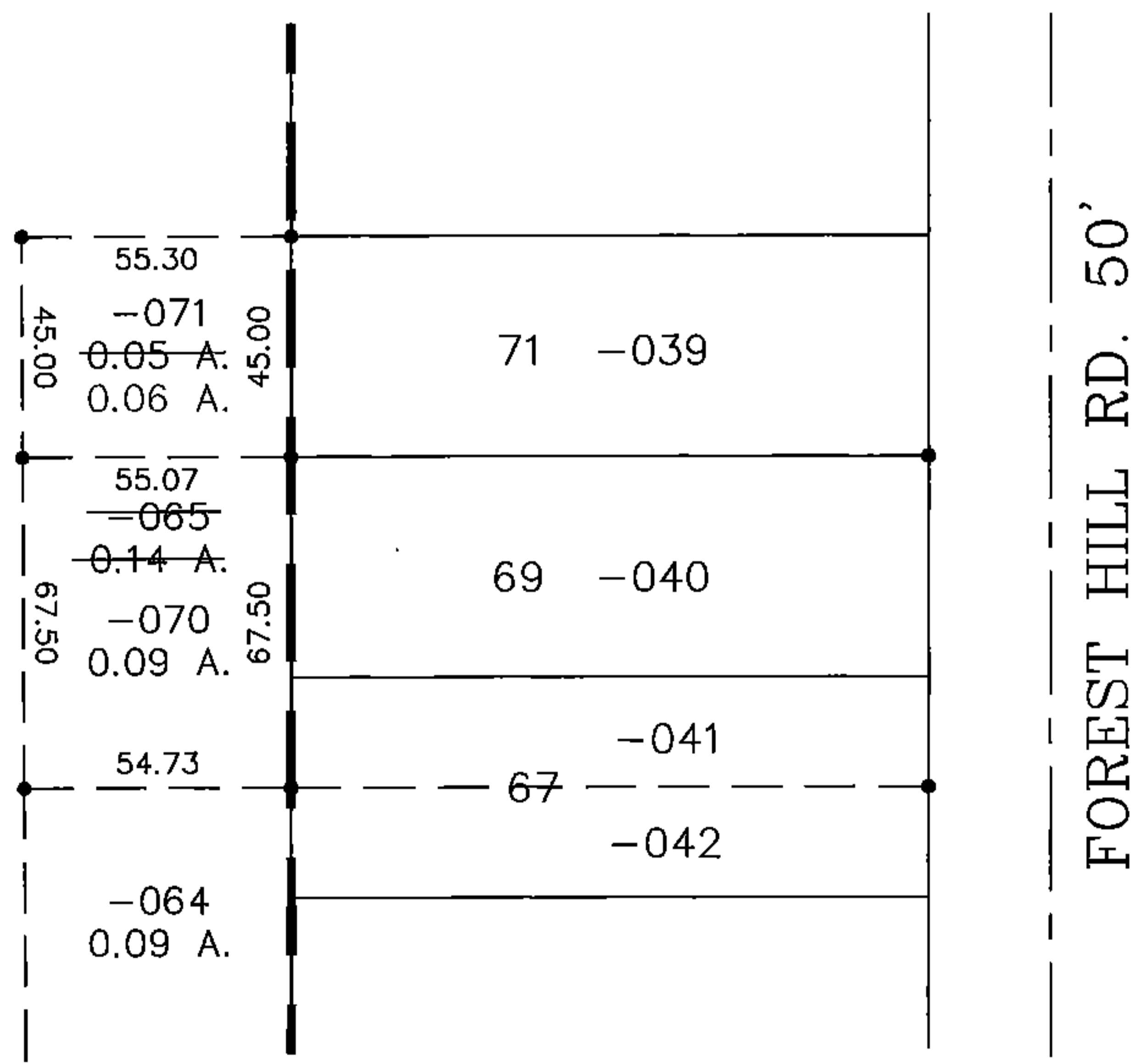
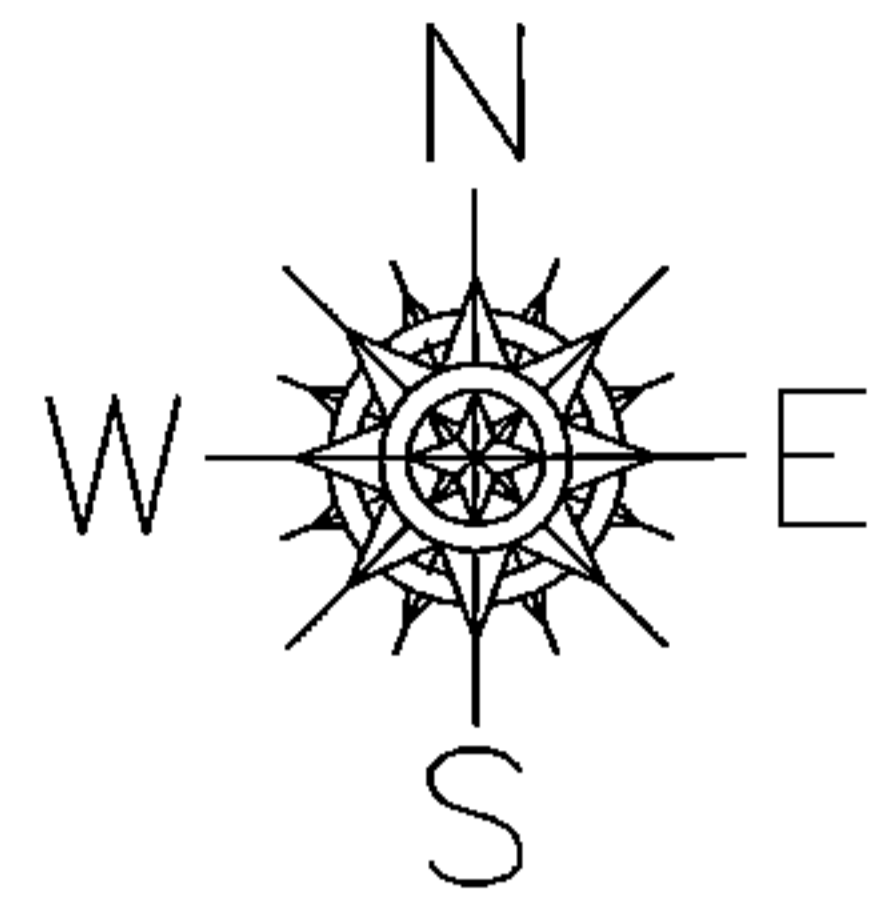


PARENT PARCEL: 04-00-018-138-065
 CHILD PARCEL: 04-00-018-138-070 & -071
 STARTING POINT: 3/4" I.P. FD., N.W. CORNER OF S/L 69 &
3/4" I.P. FD., N.W. CORNER OF S/L 71

13-03213



SPLITS/DEEDS PROCESSED
 LORAIN COUNTY TAX MAP DEPARTMENT
 226 MIDDLE AVE. ELYRIA, OHIO

SURVEYED BY: PETER ZWICK
 CLOSURE: 0.01 : 10,000
 MAP PAGE(S): 4-00-018-D
 APPROVED BY: TJS DATE: 12/23/13
 SCALE: 1" = 50' PRIOR INST.: 20090312024