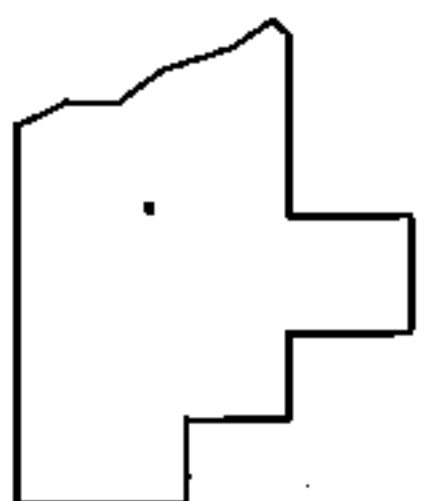
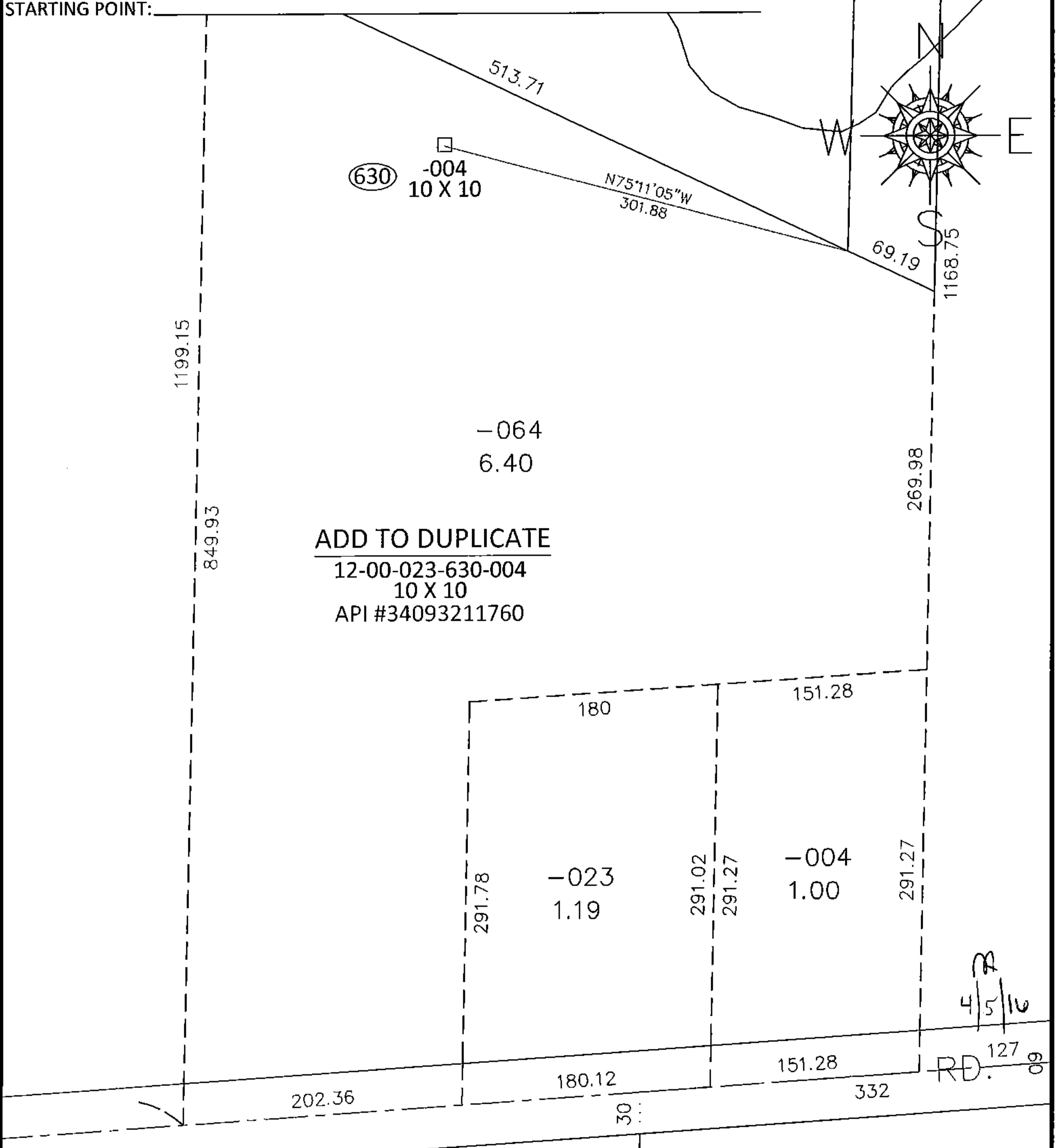


PARENT PARCEL: 12-00-023-000-064

CHILD PARCEL: 12-00-023-630-004

15-03209-A

STARTING POINT:



**SPLITS/DEEDS PROCESSED**

LORAIN COUNTY TAX MAP DEPARTMENT  
 226 MIDDLE AVE. ELYRIA, OHIO

SURVEYED BY: N/A  
 CLOSURE: N/A  
 MAP PAGE(S): 12-00-023-B  
 APPROVED BY: RRM DATE: 5-14-15  
 SCALE: 1"= 100 PRIOR INST.:

4/5/16