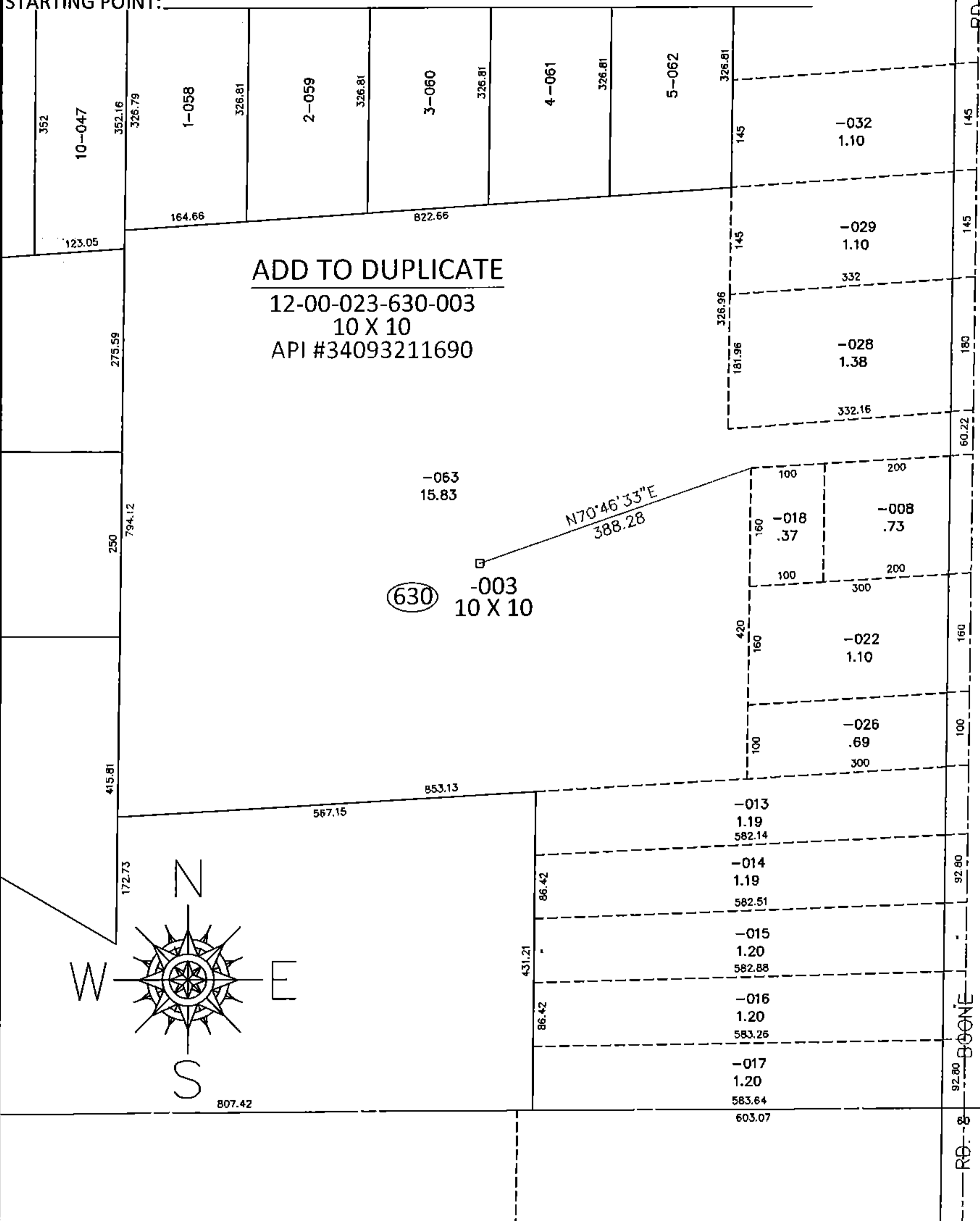


PARENT PARCEL: 12-00-023-000-063

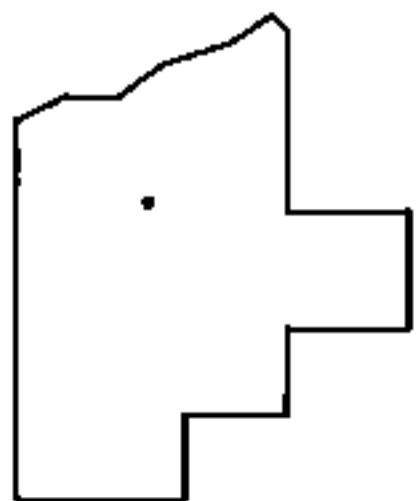
CHILD PARCEL: 12-00-023-630-003

15-03207-A

STARTING POINT:



4/5/16



SPLITS/DEEDS PROCESSED

LORAIN COUNTY TAX MAP DEPARTMENT
226 MIDDLE AVE. ELYRIA, OHIO

SURVEYED BY: N/A
 CLOSURE: N/A
 MAP PAGE(S): 12-00-023-B
 APPROVED BY: RRM DATE: 5-14-15
 SCALE: 1" = 200 PRIOR INST.: _____