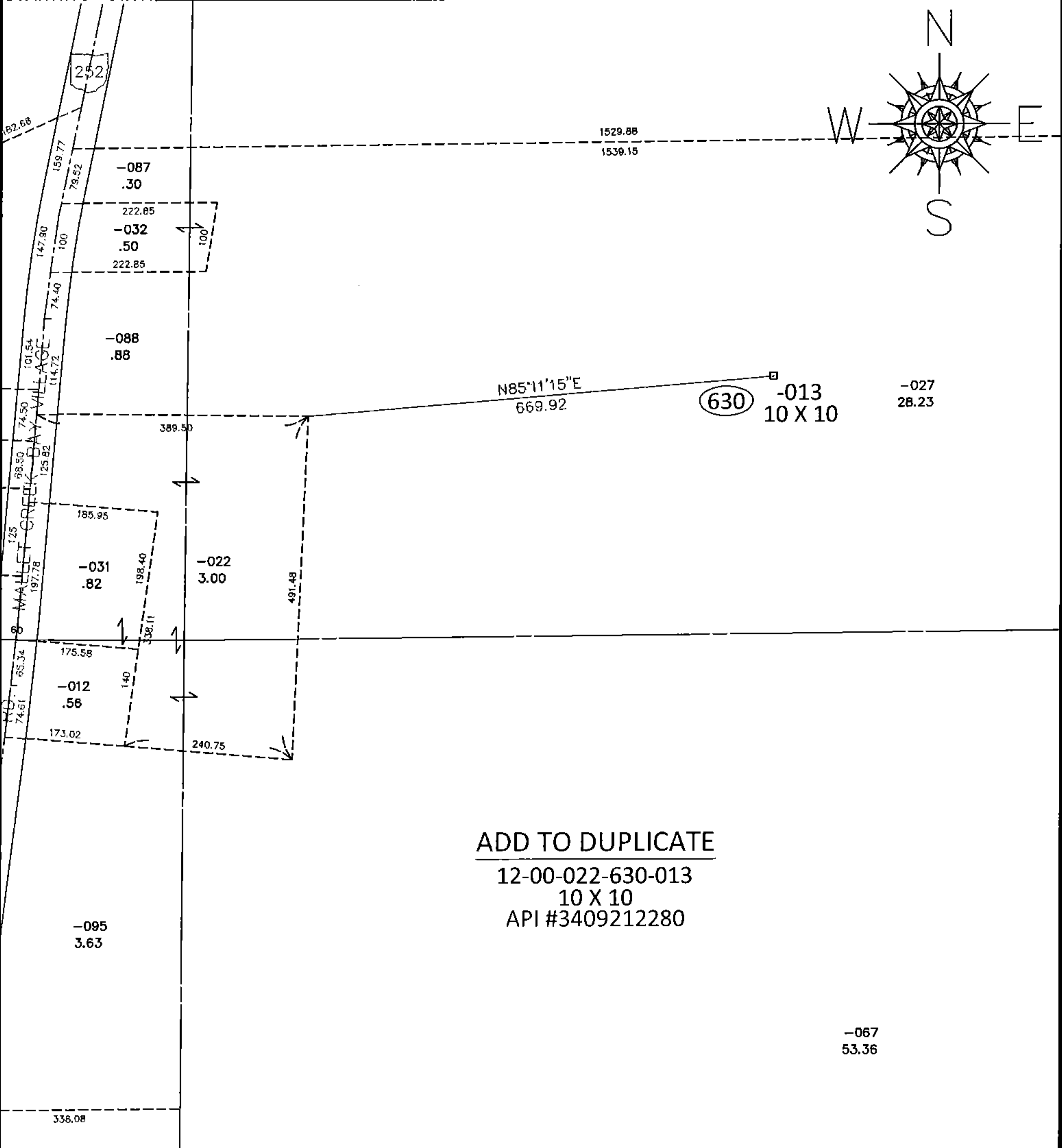


PARENT PARCEL: 12-00-022-000-027

CHILD PARCEL: 12-00-022-630-013

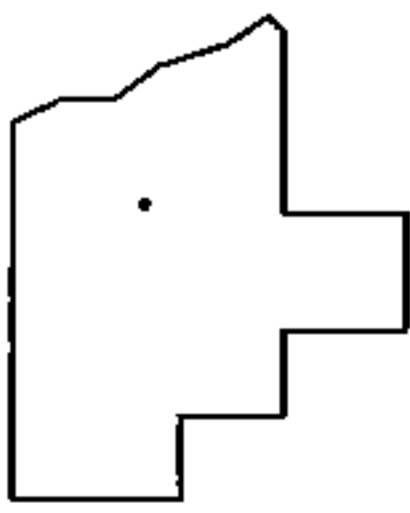
15-03206-A

STARTING POINT:



ADD TO DUPLICATE

12-00-022-630-013
10 X 10
API #3409212280



SPLITS/DEEDS PROCESSED

LORAIN COUNTY TAX MAP DEPARTMENT
226 MIDDLE AVE. ELYRIA, OHIO

SURVEYED BY: N/A
 CLOSURE: N/A
 MAP PAGE(S): 12-00-022-A
 APPROVED BY: RRM DATE: 5-14-15
 SCALE: 1"= 200 PRIOR INST.: _____