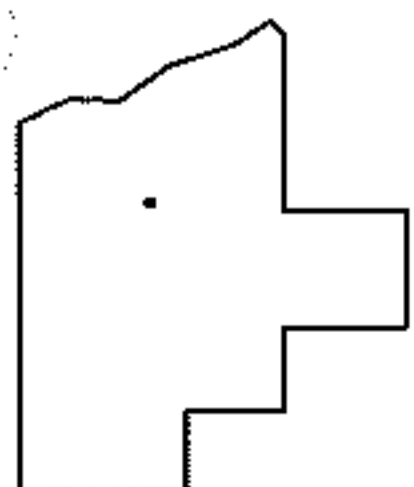
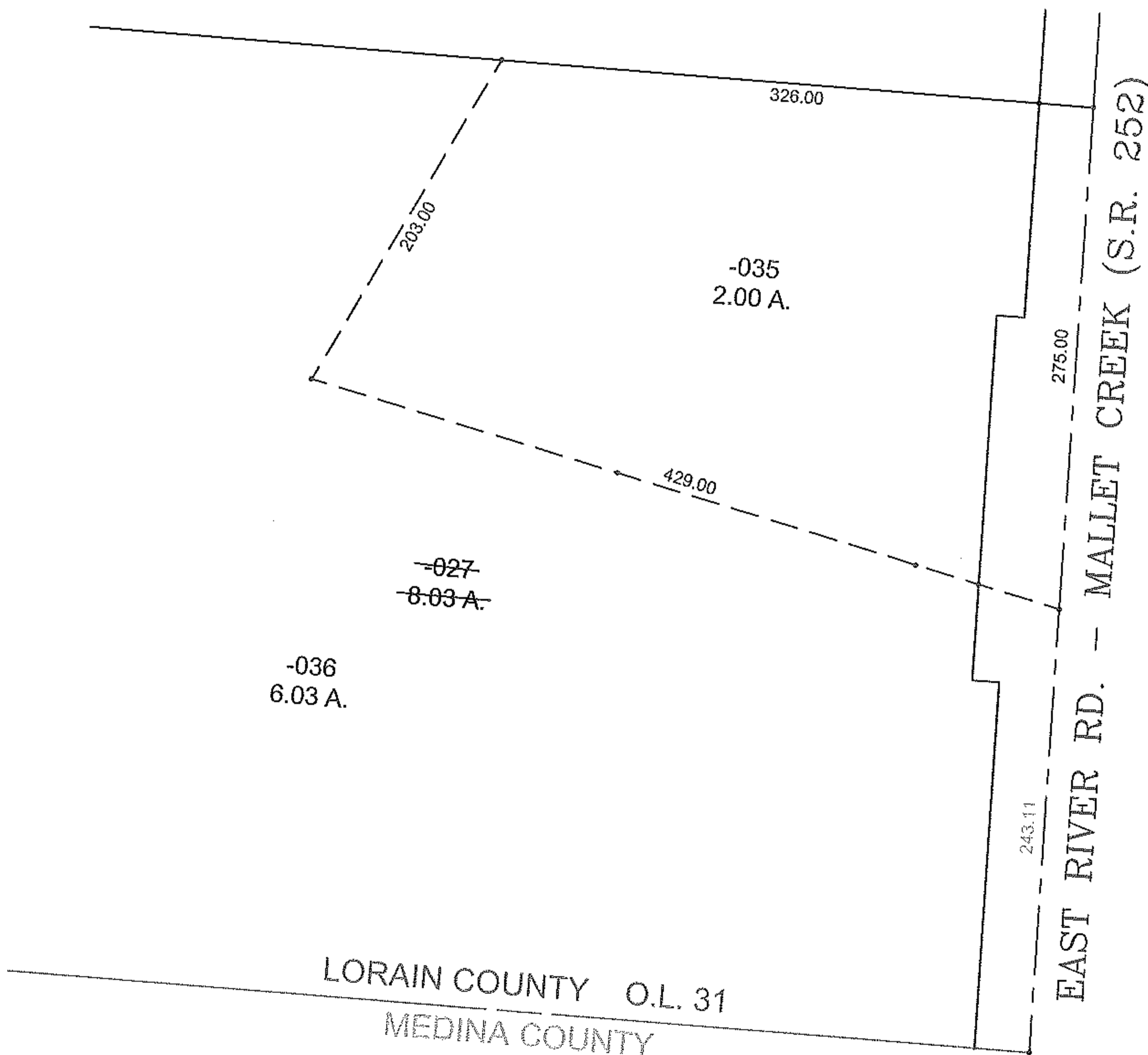
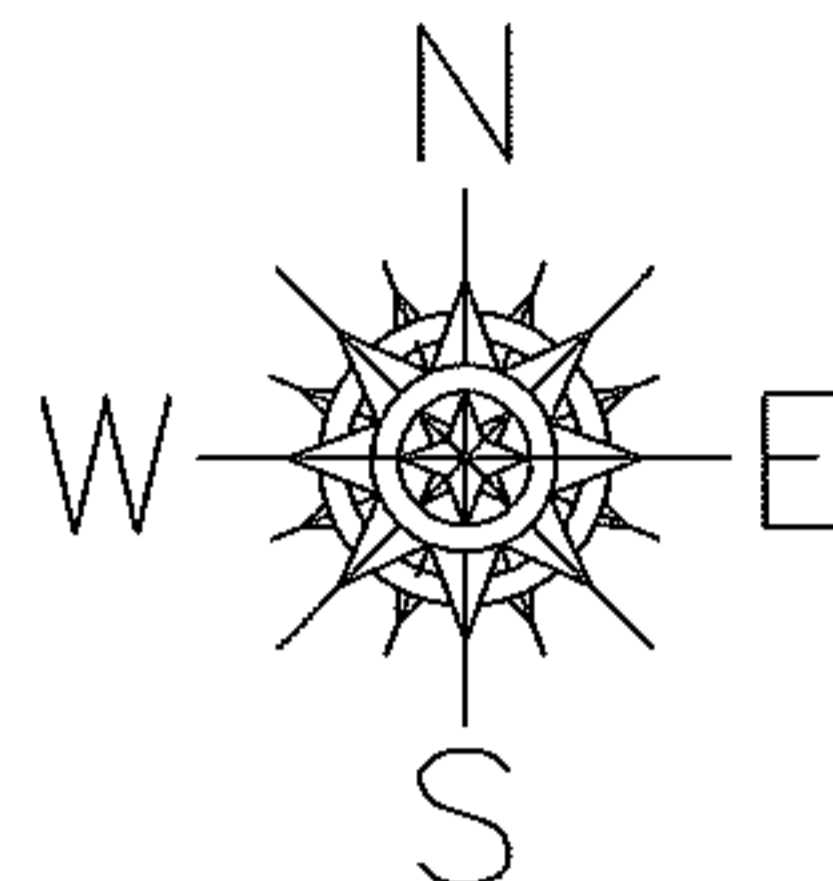


PARENT PARCEL: 12-00-031-000-027

CHILD PARCEL: 12-00-031-000-035 & -036

STARTING POINT: MAG. NAIL SET, CL OF EAST RIVER RD. - MALLET CREEK (S.R. 252) &
SOUTH LINE OF O.L. 31

13-03205



SPLITS/DEEDS PROCESSED

LORAIN COUNTY TAX MAP DEPARTMENT
226 MIDDLE AVE. ELYRIA, OHIO

SURVEYED BY: RICHARD A. FREDRICKSON

CLOSURE: 0.01 : 10,000

MAP PAGE(S): 12-G

APPROVED BY: TJS DATE: 12/2/13

SCALE: 1" = 100 PRIOR INSTRUMENT: 20120411033