

PARENT PARCEL: 12-00-002-000-001

CHILD PARCEL: 12-00-002-630-007

15-03203-A

STARTING POINT:



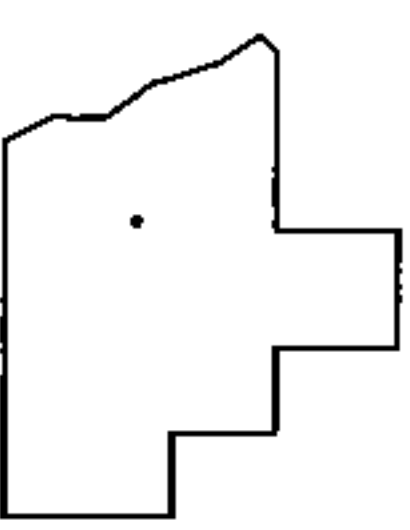
(630)
-007
10 X 10
S78°37'57"E
378.40

-001
60.48

ADD TO DUPLICATE
12-00-002-630-007
10 X 10
API #34093211830

(630)
-001
10 X 10

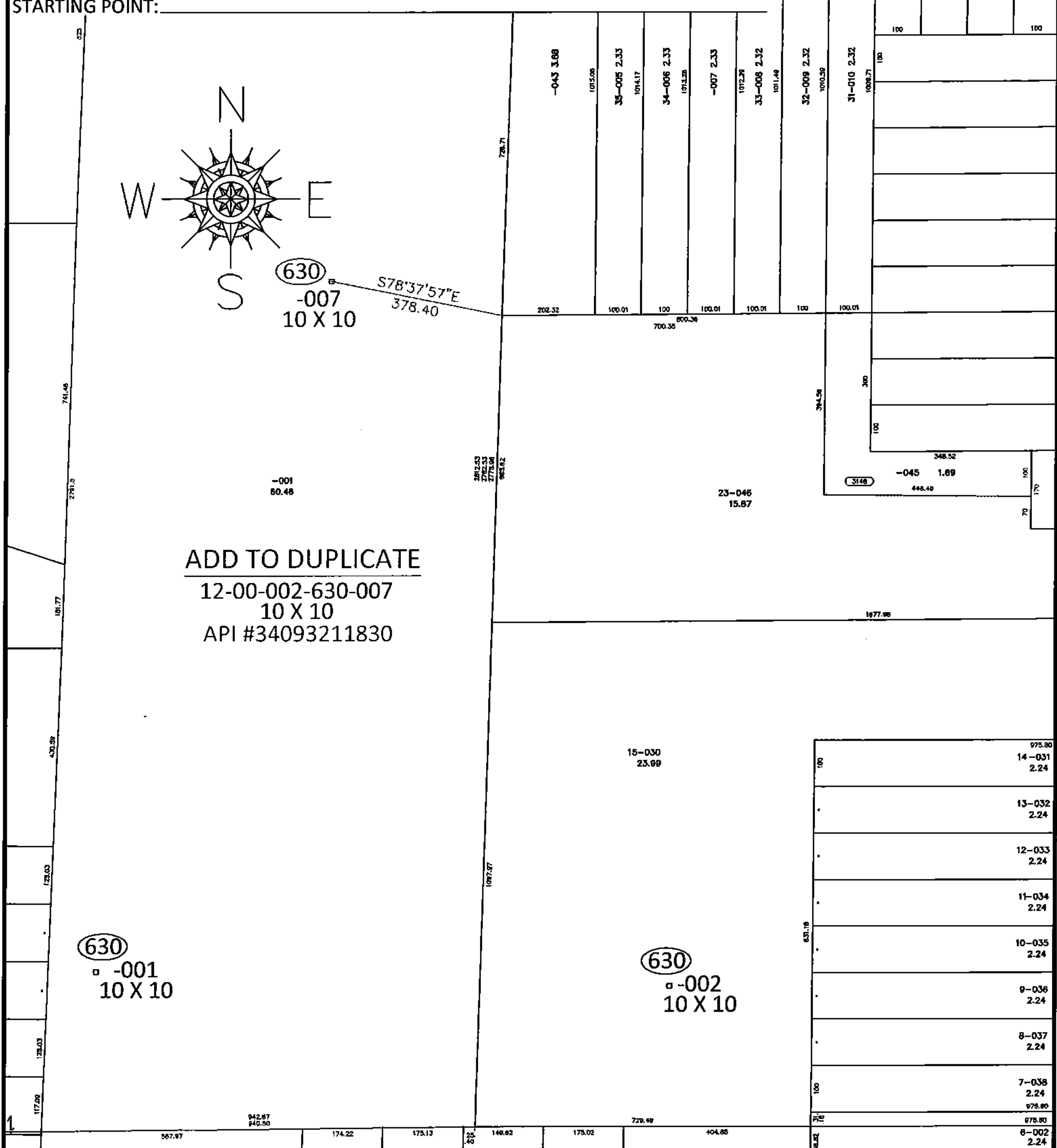
(630)
-002
10 X 10



SPLITS/DEEDS PROCESSED

LORAIN COUNTY TAX MAP DEPARTMENT
226 MIDDLE AVE. ELYRIA, OHIO

SURVEYED BY: N/A
CLOSURE: N/A
MAP PAGE(S): 12-00-002-A
APPROVED BY: RRM DATE: 5-13-15
SCALE: 1"= 300 PRIOR INST.:



975.80
14-031
2.24
13-032
2.24
12-033
2.24
11-034
2.24
10-035
2.24
9-036
2.24
8-037
2.24
7-038
2.24
975.80
975.80
8-002
2.24