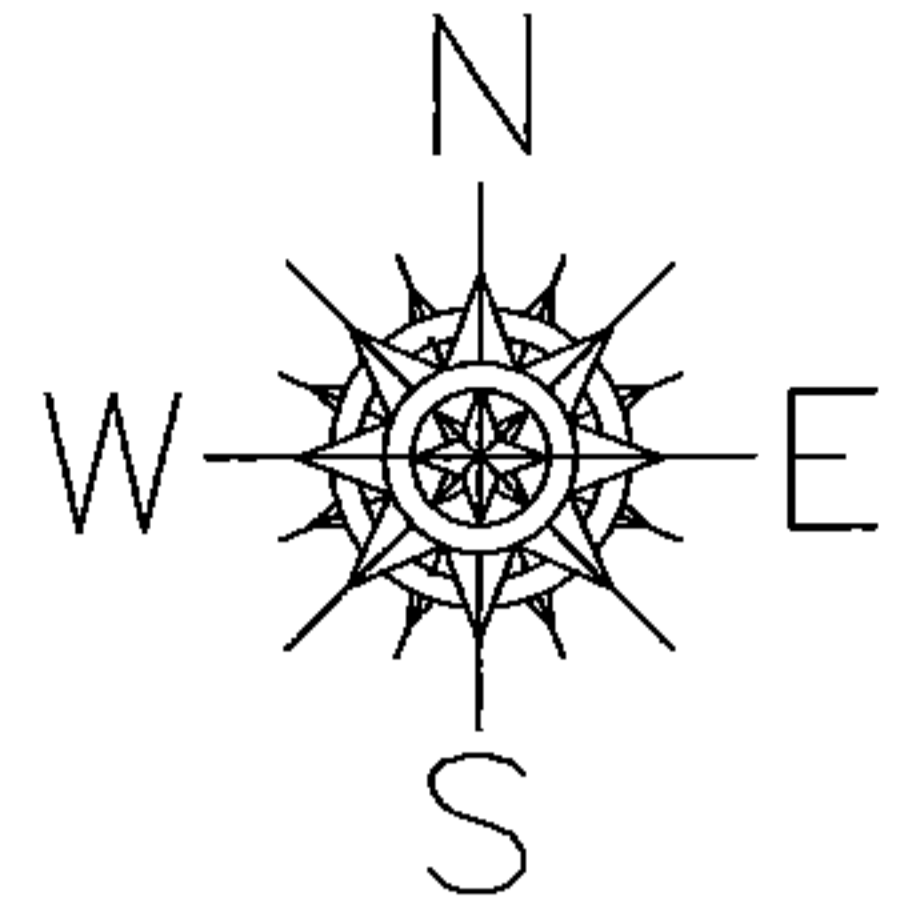
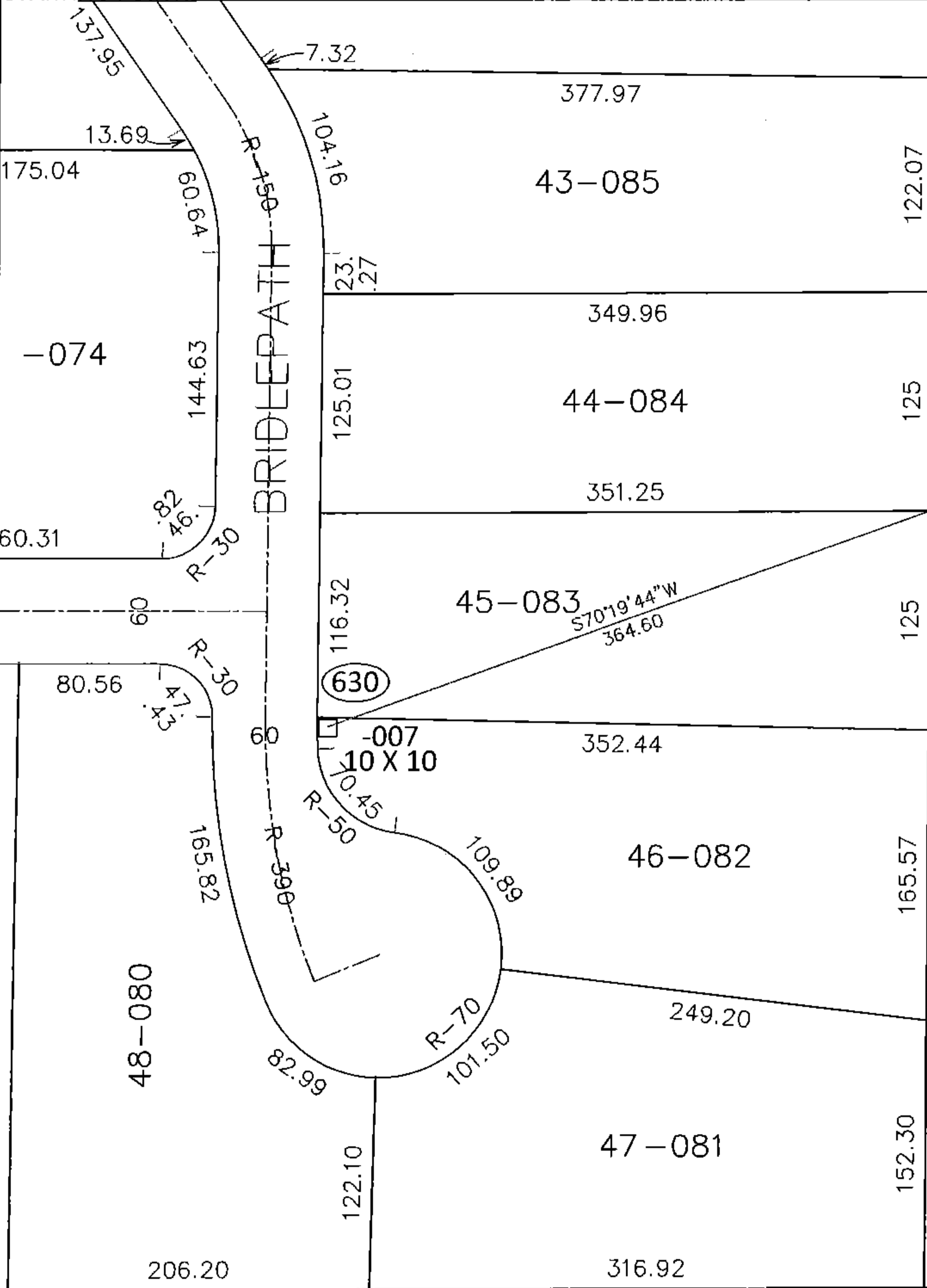


PARENT PARCEL: 12-00-019-000-082

CHILD PARCEL: 12-00-019-630-007

15-03201-A

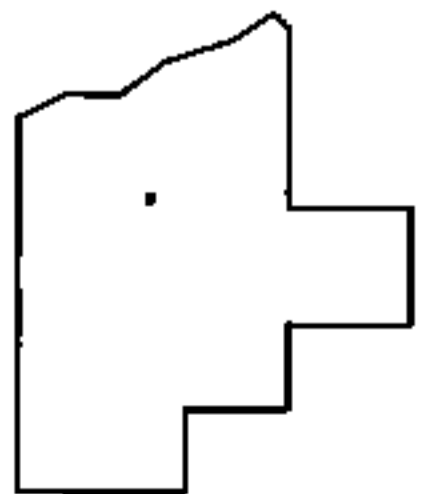
STARTING POINT:



ADD TO DUPLICATE

12-00-019-630-007
10 X 10
API #34093211870

RA
4/5/14



SPLITS/DEEDS PROCESSED

LORAIN COUNTY TAX MAP DEPARTMENT
226 MIDDLE AVE. ELYRIA, OHIO

SURVEYED BY: N/A
 CLOSURE: N/A
 MAP PAGE(S): 12-00-019-A
 APPROVED BY: RRM DATE: 5-13-15
 SCALE: 1"=100 PRIOR INST.: _____