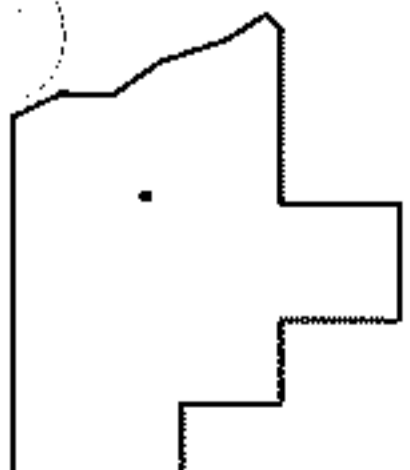
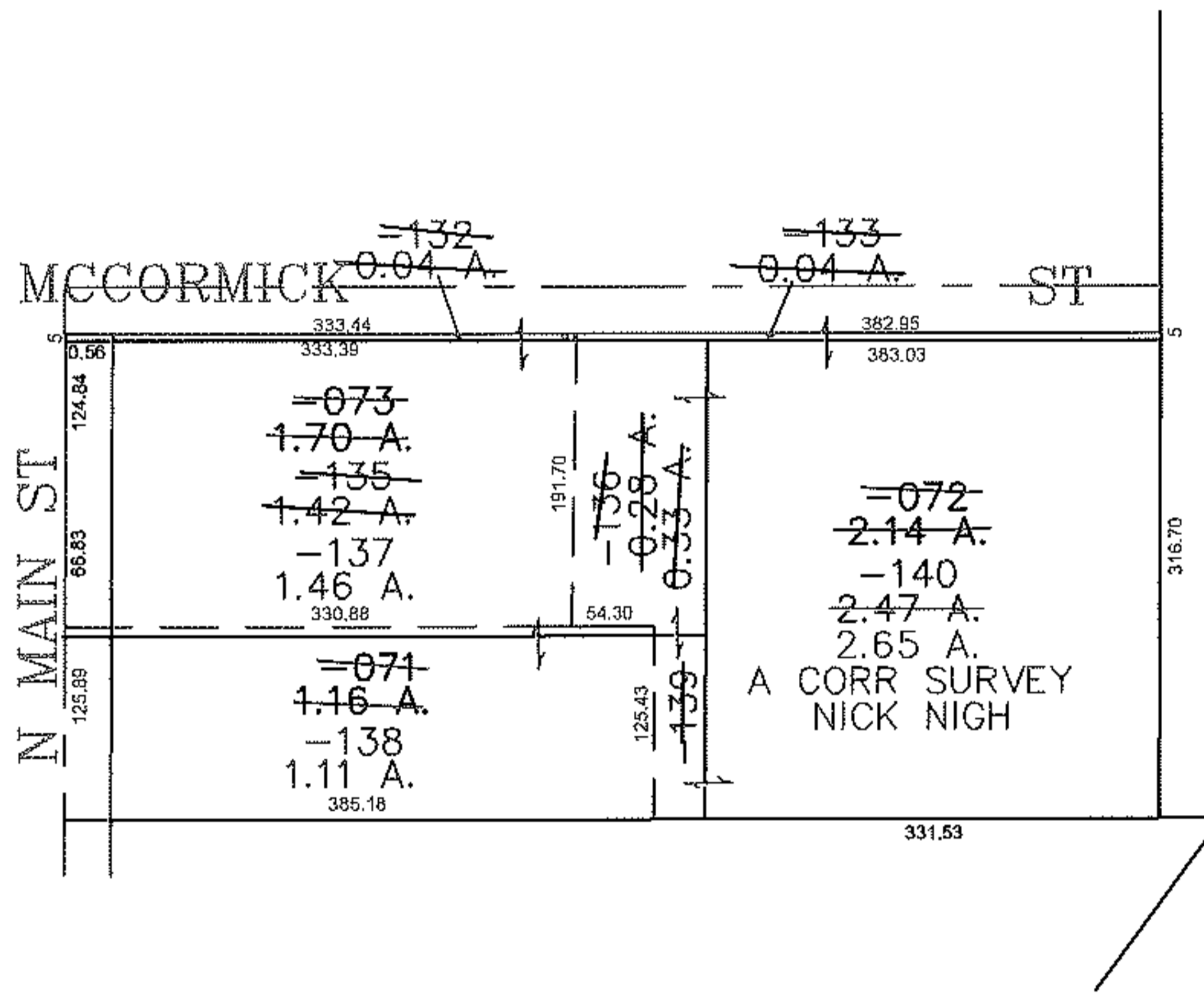
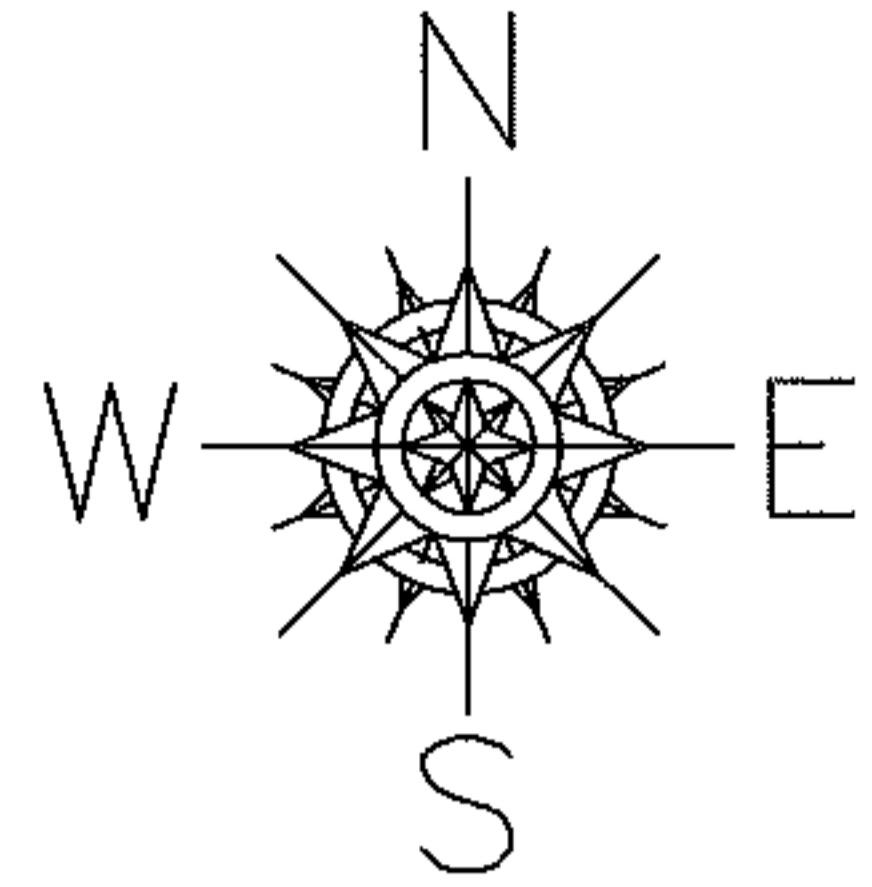


PARENT PARCEL: 18-00-020-000-083, -073, -071, -072

CHILD PARCEL: 18-00-020-000-132 THRU -140

STARTING POINT: CENTERLINE OF MCCORMICK ST & N MAIN ST

13-03195



**SPLITS/DEEDS PROCESSED**  
**LORAIN COUNTY TAX MAP DEPARTMENT**  
 226 MIDDLE AVE. ELYRIA, OHIO

SURVEYED BY: NICK NIGH  
 CLOSURE: 0.00 : 10,000  
 MAP PAGE(S): 18-00-020  
 APPROVED BY: JAH DATE: 10-16-2013  
 SCALE: 1" = 200 PRIOR INSTRUMENT: OR 204/488