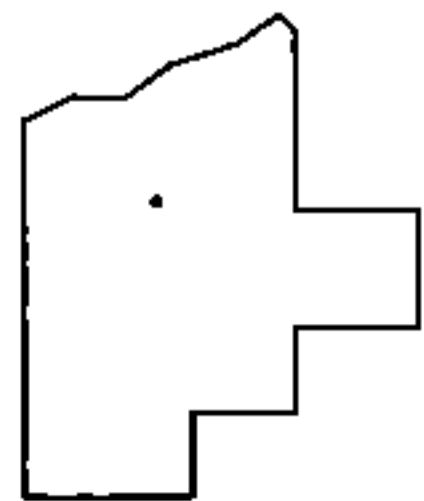
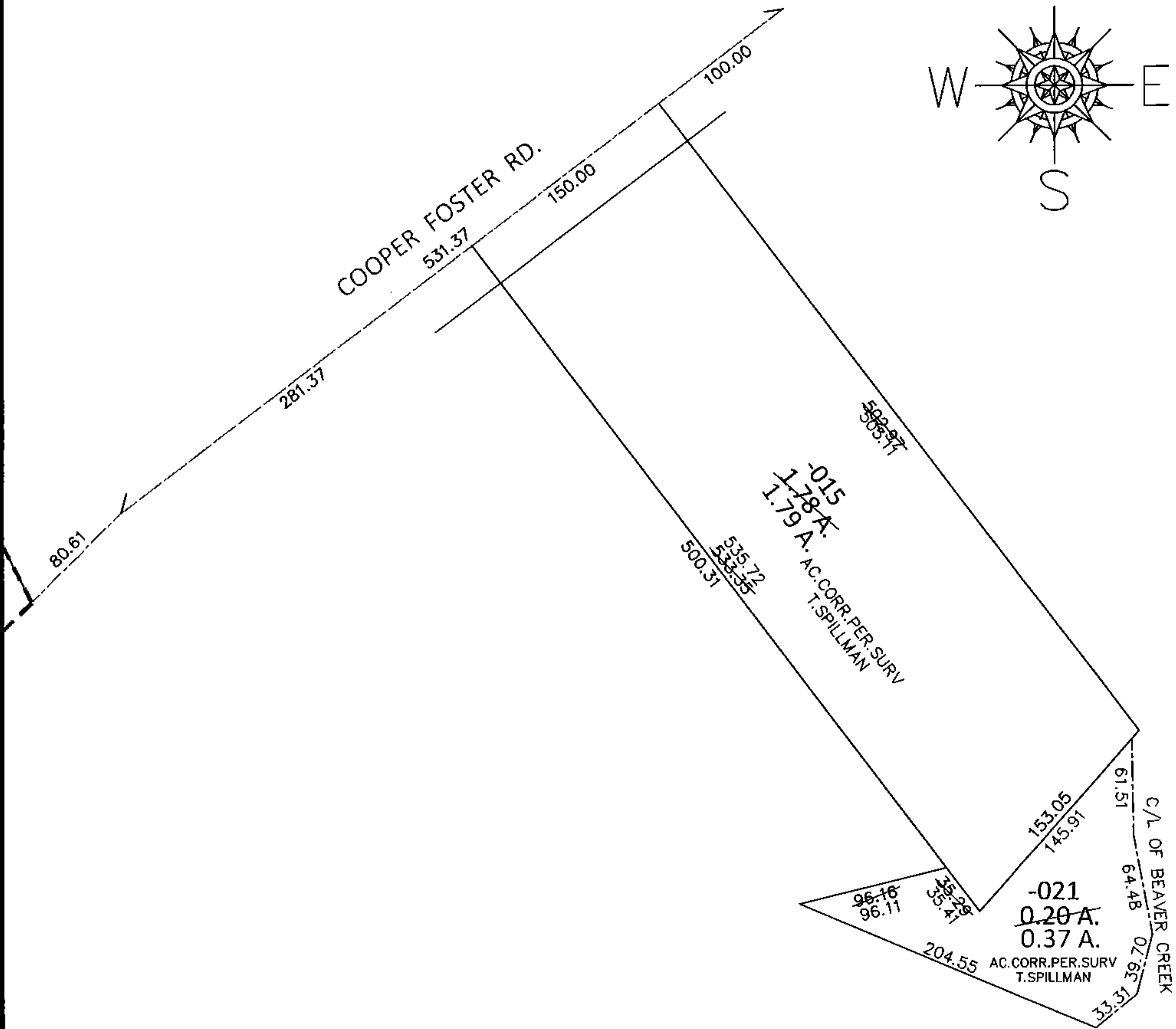
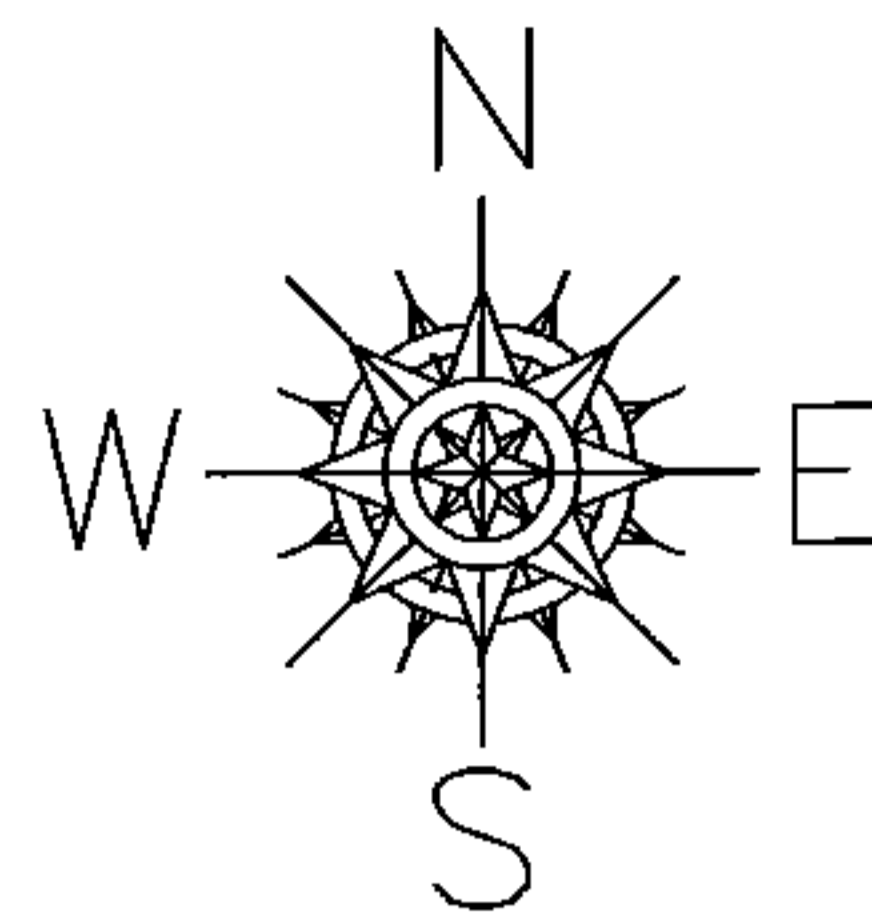


PARENT PARCEL: 05-00-021-102-015, -021

CHILD PARCEL:

STARTING POINT: C/L OF COOPER FOSTER RD. AT THE SOUTHEAST CORNER OF BRECKENRIDGE SUB. (VOL.24 PG.99)

15-03194-A



SPLITS/DEEDS PROCESSED

LORAIN COUNTY TAX MAP DEPARTMENT
226 MIDDLE AVE. ELYRIA, OHIO

SURVEYED BY: THEODORE J. SPILLMAN

CLOSURE: .01:10,000

MAP PAGE(S): 5-00-021-A

APPROVED BY: RRM DATE: 5-12-15

SCALE: 1"= 100 PRIOR INST.: 20110394033