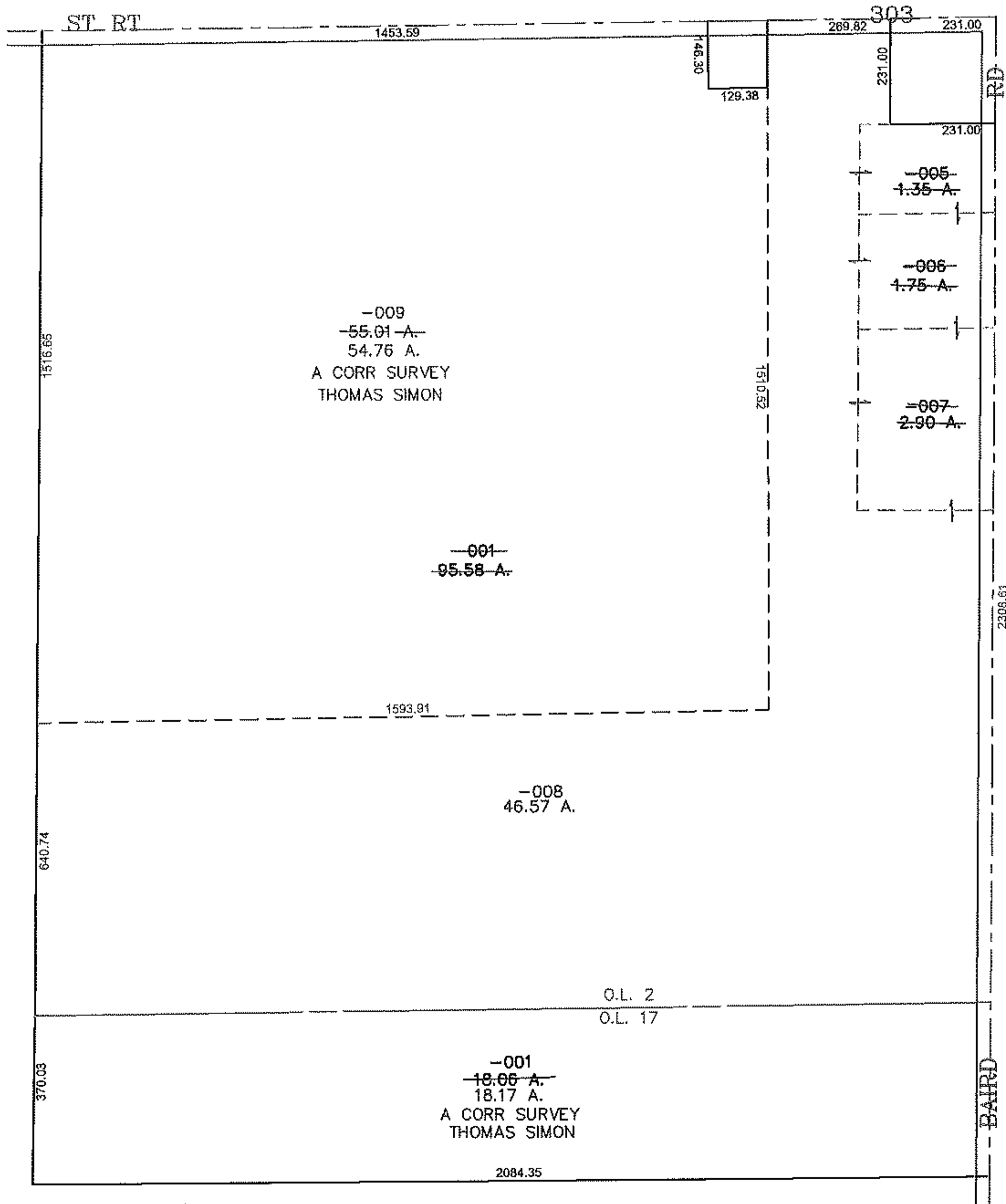
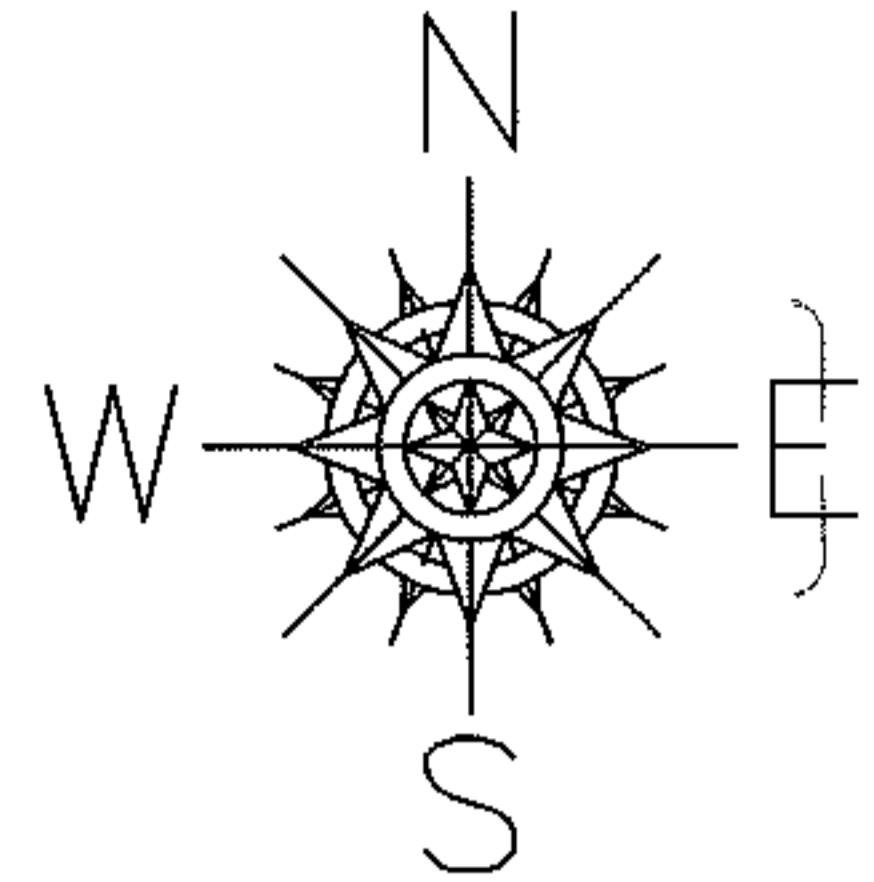


PARENT PARCEL: 13-09-002-000-001, 005, -006, -007 13-09-017-000-001

CHILD PARCEL: 13-09-002-000-008, -009 13-09-017-000-001

STARTING POINT: CENTERLINE OF BAIRD RD & ST RT 303

13-03186



SPLITS/DEEDS PROCESSED

LORAIN COUNTY TAX MAP DEPARTMENT
226 MIDDLE AVE. ELYRIA, OHIO

SURVEYED BY: THOMAS SIMON

CLOSURE: 0.00 : 10,000

MAP PAGE(S): 13-E

APPROVED BY: JAH DATE: 9/23/2013

SCALE: 1" = 400 PRIOR INST.: 20040997957