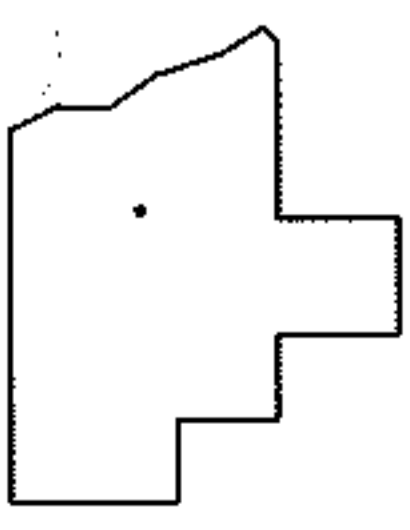
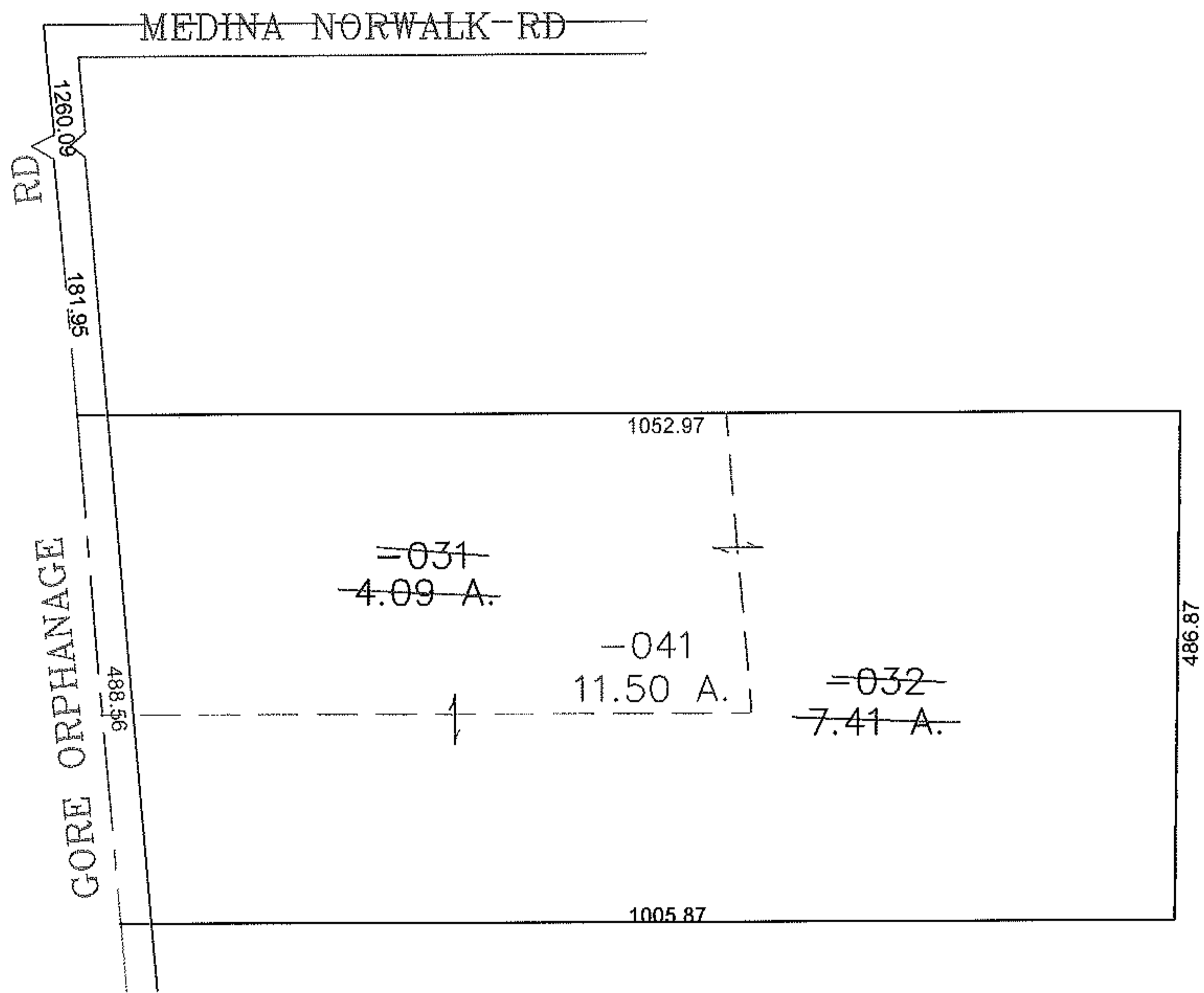
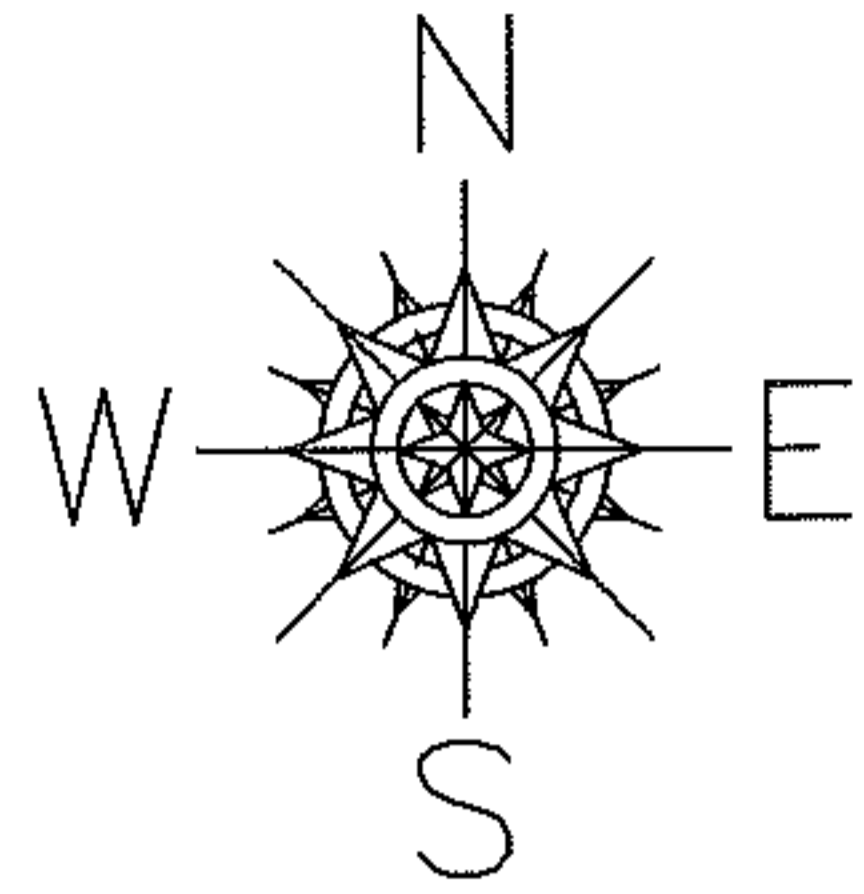


PARENT PARCEL: 17-07-020-000-031, -032

CHILD PARCEL: 17-07-020-000-041

STARTING POINT: CENTERLINE OF GORE ORPHANAGE RD & MEDINA NORWALK RD

13-03184



SPLITS/DEEDS PROCESSED
LORAIN COUNTY TAX MAP DEPARTMENT
 226 MIDDLE AVE. ELYRIA, OHIO

SURVEYED BY: THOMAS SNEZEK
 CLOSURE: 0.00 : 10.000
 MAP PAGE(S): 17-E
 APPROVED BY: JAH DATE: 9-18-2013
 SCALE: 1" = 200' PRIOR INSTRUMENT: 20120437003