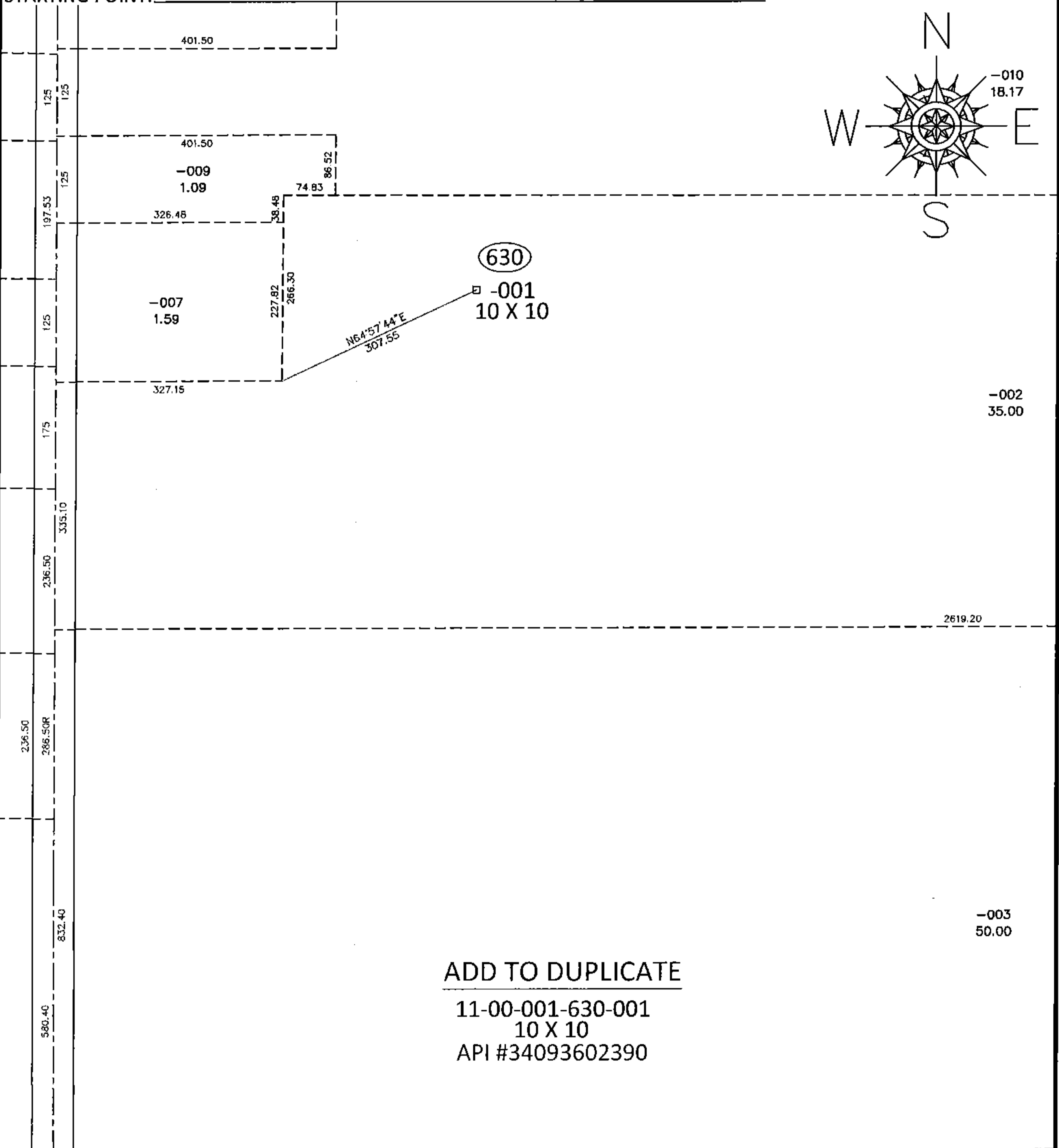
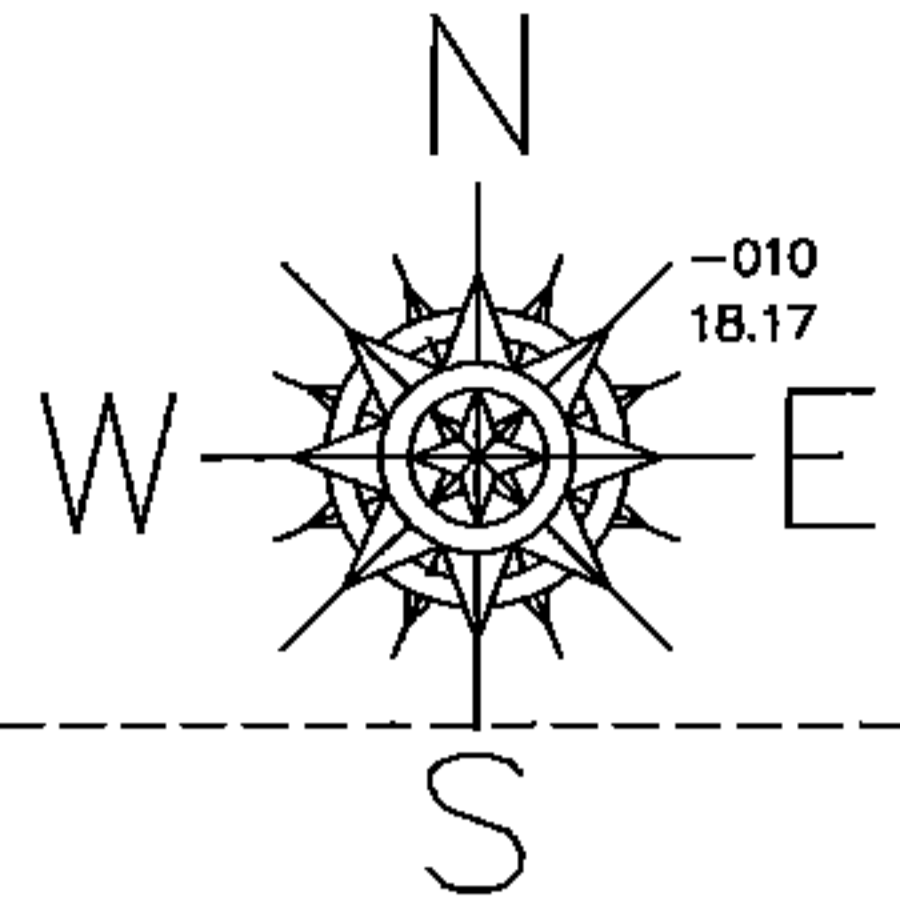


PARENT PARCEL: 11-00-001-000-002

CHILD PARCEL: 11-00-001-630-001

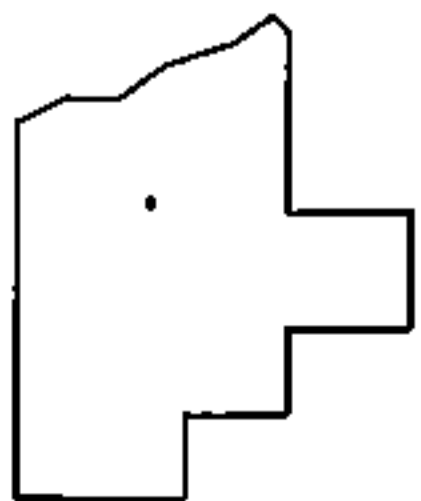
15-03183-A

STARTING POINT:



ADD TO DUPLICATE

11-00-001-630-001  
10 X 10  
API #34093602390



**SPLITS/DEEDS PROCESSED**

LORAIN COUNTY TAX MAP DEPARTMENT  
226 MIDDLE AVE. ELYRIA, OHIO

SURVEYED BY: N/A  
CLOSURE: N/A  
MAP PAGE(S): 11-00-001-A  
APPROVED BY: RRM DATE: 5-7-15  
SCALE: 1"=200 PRIOR INST.: \_\_\_\_\_