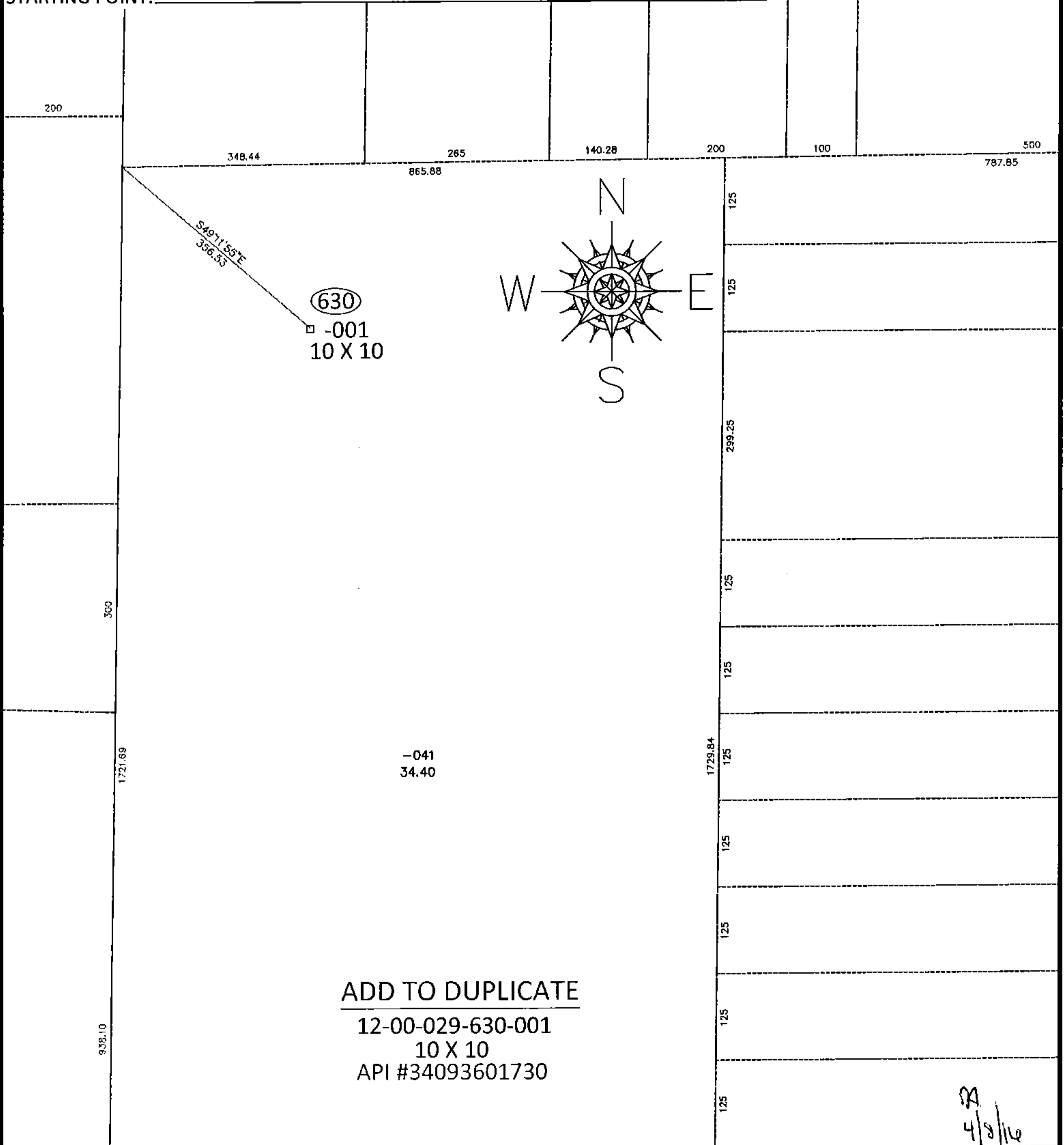


PARENT PARCEL: 12-00-029-000-041

CHILD PARCEL: 12-00-029-630-001

15-03180-A

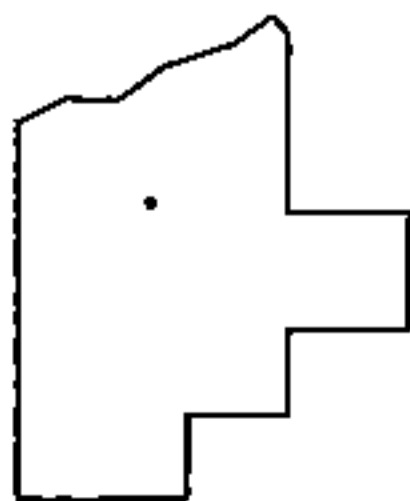
STARTING POINT:



ADD TO DUPLICATE

12-00-029-630-001
10 X 10
API #34093601730

RR
4/8/16



SPLITS/DEEDS PROCESSED

LORAIN COUNTY TAX MAP DEPARTMENT
226 MIDDLE AVE. ELYRIA, OHIO

SURVEYED BY: N/A

CLOSURE: N/A

MAP PAGE(S): 12-G

APPROVED BY: RRM DATE: 5-6-15

SCALE: 1" = 200

PRIOR INST.: