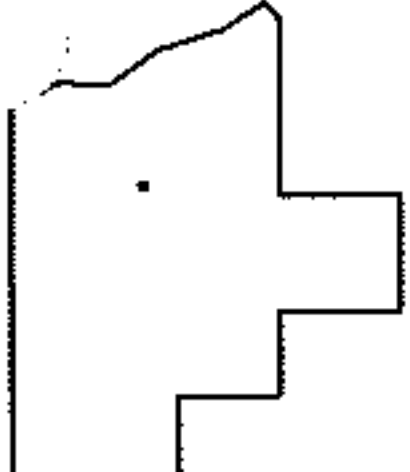
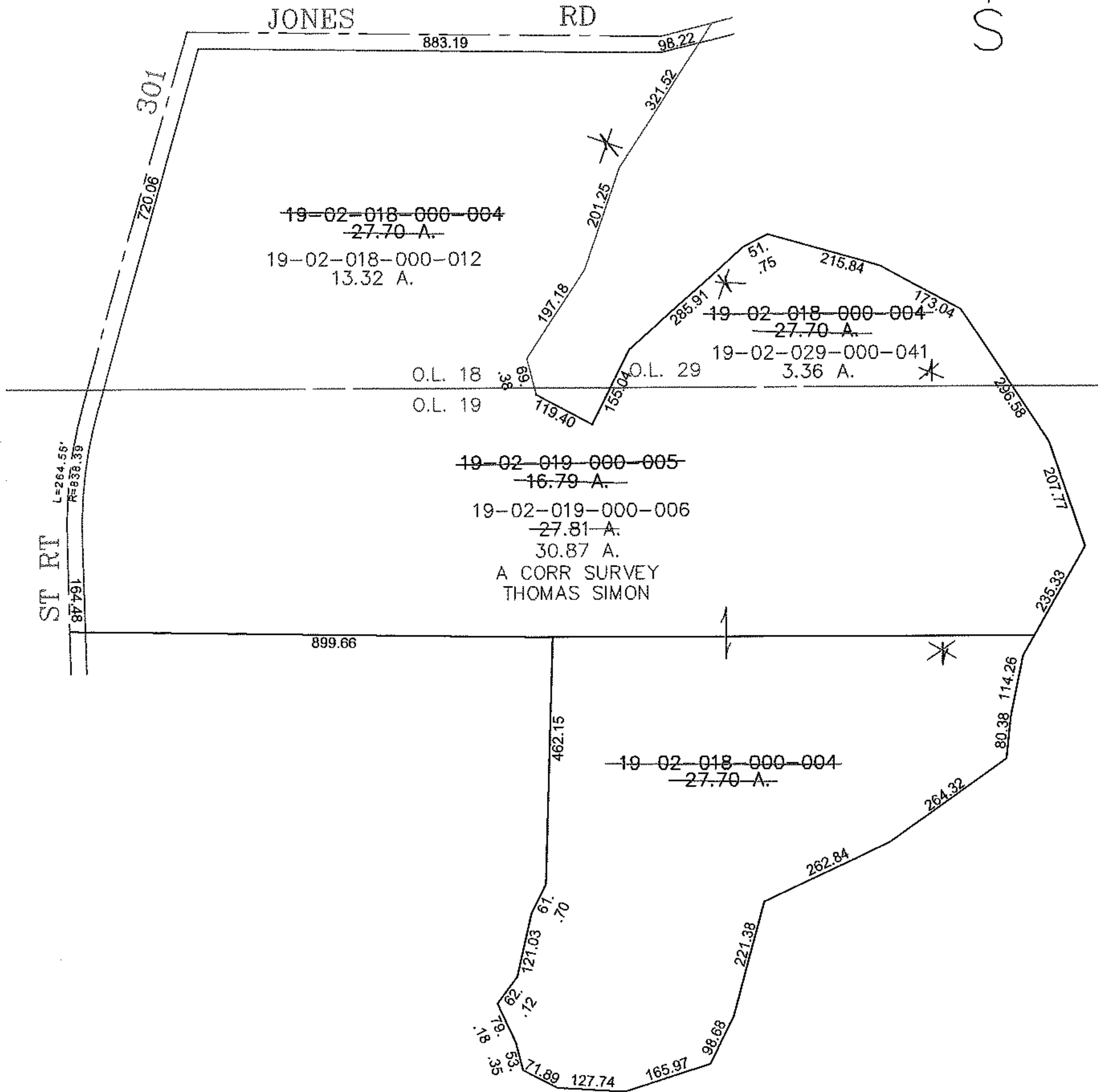
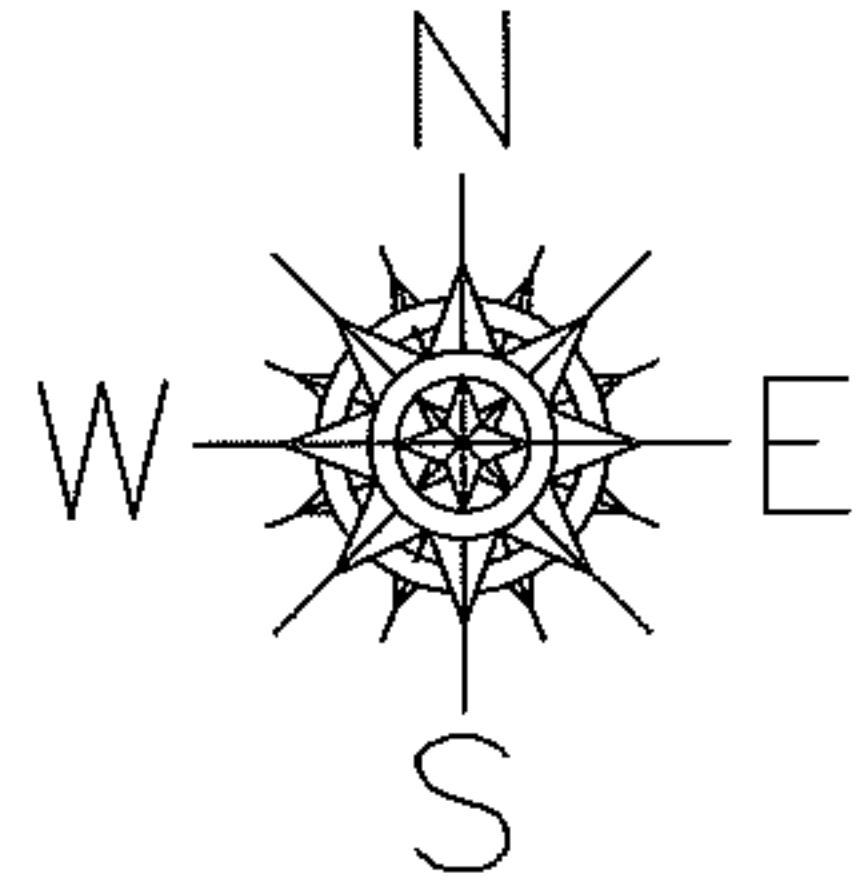


PARENT PARCEL: 19-02-018-000-004, 19-02-019-000-005, A1  
 CHILD PARCEL: 19-02-018-000-012, 19-02-029-000-040, 19-02-019-000-006  
 STARTING POINT: CENTERLINE OF ST RT 301 & JONES RD

13-03171



**SPLITS/DEEDS PROCESSED**  
 LORAIN COUNTY TAX MAP DEPARTMENT  
 226 MIDDLE AVE. ELYRIA, OHIO

SURVEYED BY: THOMAS SIMON  
 CLOSURE: 0.00 : 10.000  
 MAP PAGE(S): 19-F  
 APPROVED BY: JAH DATE: 7-29-2013  
 SCALE: 1" = 300 PRIOR INSTRUMENT: DV 1283/470