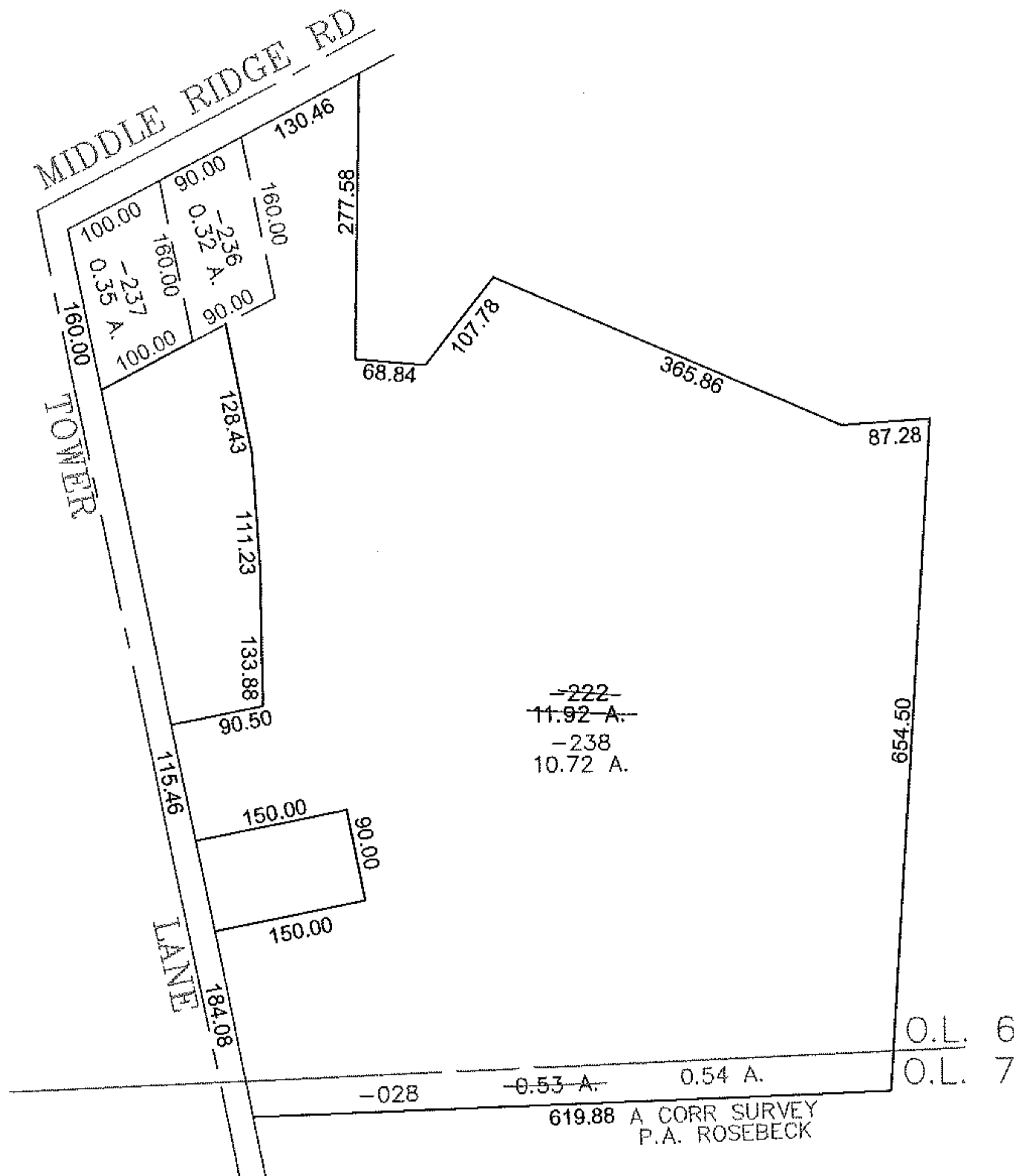
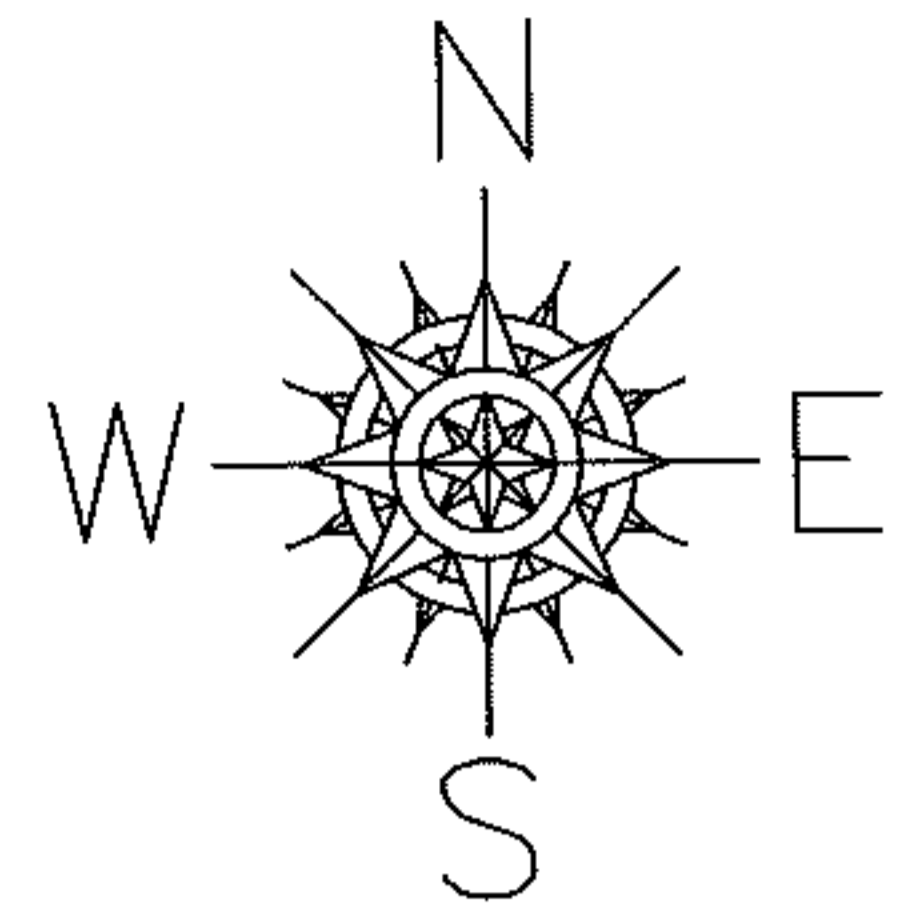


PARENT PARCEL: 05-00-006-000-222

CHILD PARCEL: 05-00-006-000-236, -238, 238 05-00-007-000-028

STARTING POINT: NORTHWESTERLY CORNER OF S/L 4 IN MIDDLE RIDGE SUBD

13-03170



**SPLITS/DEEDS PROCESSED**

LORAIN COUNTY TAX MAP DEPARTMENT  
226 MIDDLE AVE. ELYRIA, OHIO

SURVEYED BY: PHIL A ROSEBECK

CLOSURE: 0.00 : 10.000

MAP PAGE(S): 05-00-006-A

APPROVED BY: JAH DATE: 7-30-2013

SCALE: 1" = 200 PRIOR INSTRUMENT: OR 438/424