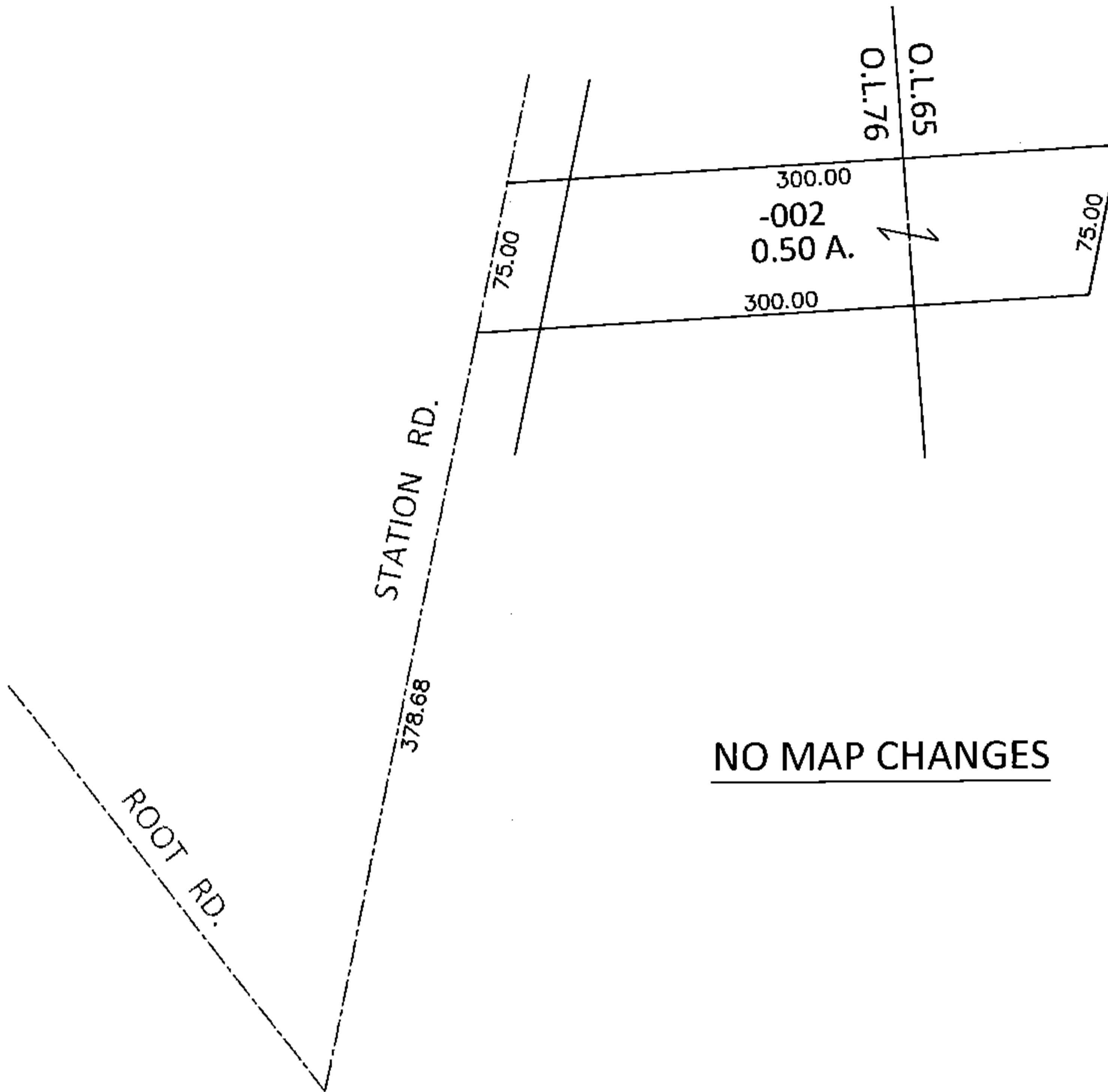
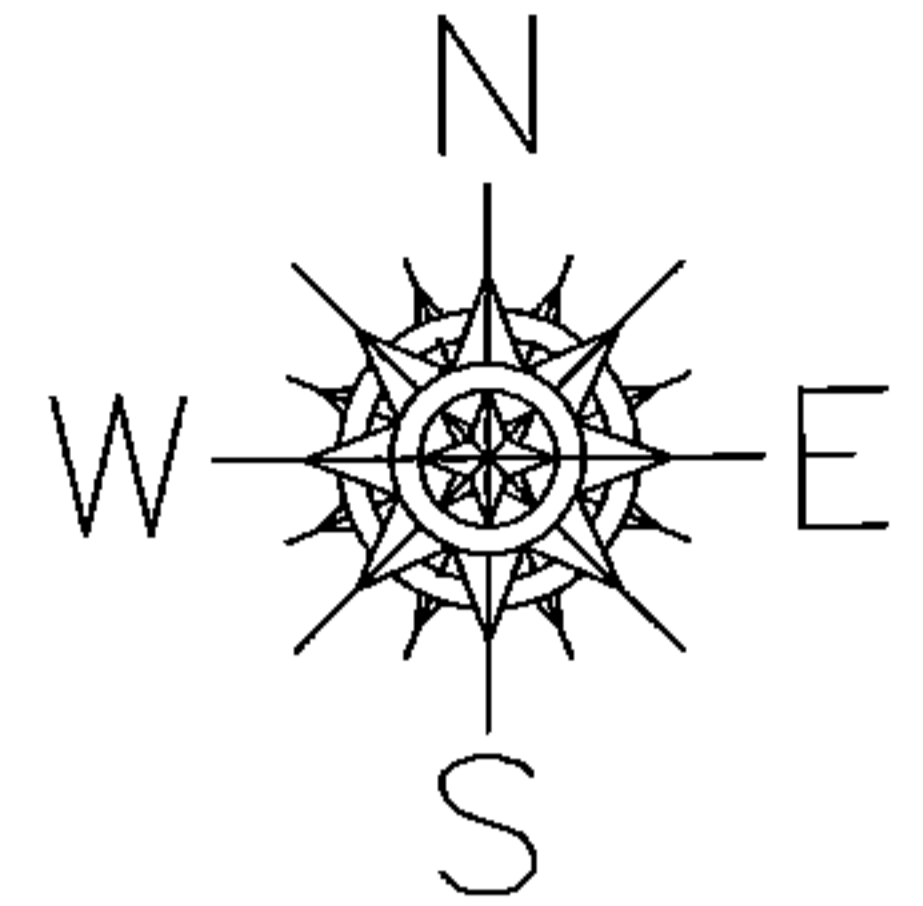


PARENT PARCEL: 12-00-076-103-002

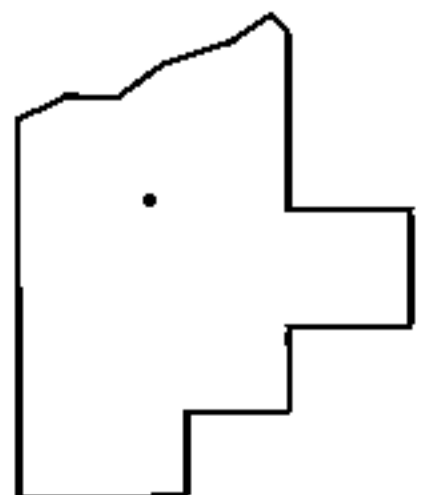
CHILD PARCEL:

STARTING POINT: INTERSECTION OF C/L OF ROOT RD. AND C/L OF STATION RD.

15-03167-X



NO MAP CHANGES



SPLITS/DEEDS PROCESSED

LORAIN COUNTY TAX MAP DEPARTMENT
226 MIDDLE AVE. ELYRIA, OHIO

SURVEYED BY: THOMAS A. SIMON

CLOSURE: .00:10,000

MAP PAGE(S): 12-00-065-A

APPROVED BY: RRM DATE: 5-5-15

SCALE: 1" = 100 PRIOR INST.: 20020804181