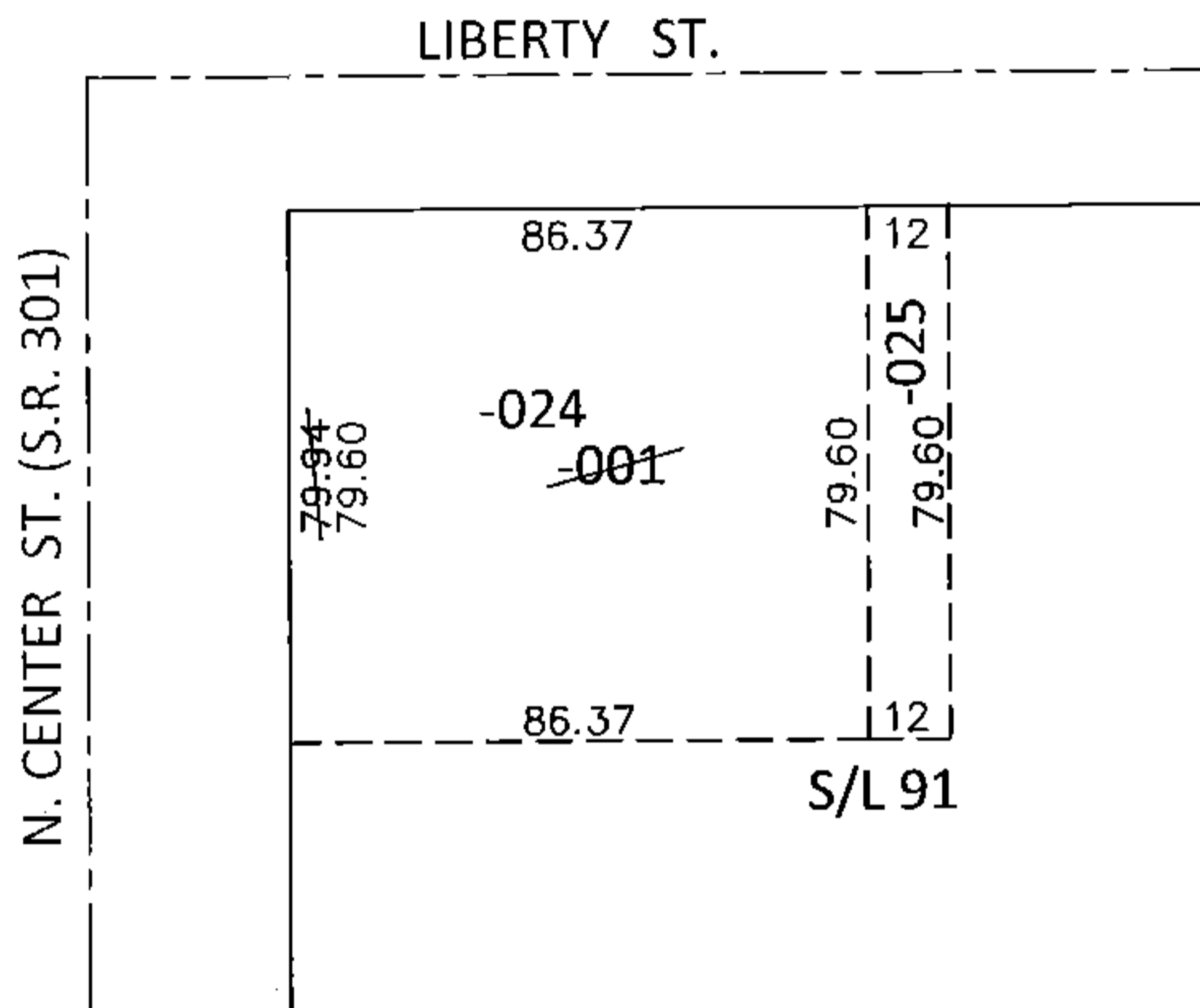
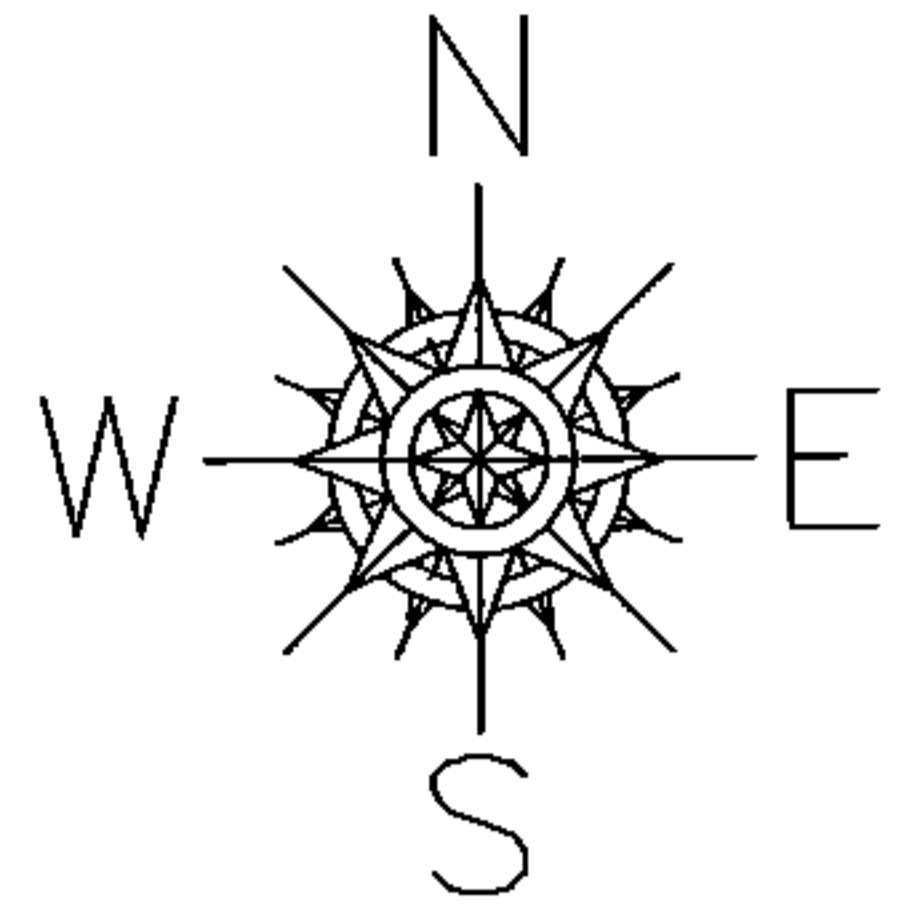


PARENT PARCEL: 15-00-046-104-001
CHILD PARCEL: 15-00-046-104-024, -025
STARTING POINT: INTERSECTION OF SOUTH LINE OF LIBERTY ST. AND EAST LINE OF S.R.301

15-03165-X



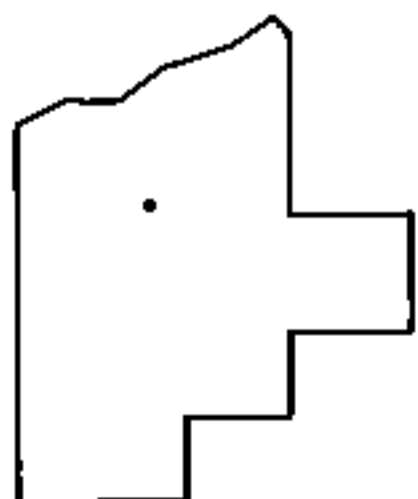
UNCOMBINATION

~~15-00-046-104-001~~
~~79.60 X 98.37~~

15-00-046-104-024
79.60 X 86.37

15-00-046-104-025
12 X 79.60

PER PRIOR DEEDS



SPLITS/DEEDS PROCESSED

LORAIN COUNTY TAX MAP DEPARTMENT
226 MIDDLE AVE. ELYRIA, OHIO

SURVEYED BY: N/A
CLOSURE: N/A
MAP PAGE(S): 15-00-046-A
APPROVED BY: RRM DATE: 5-5-15
SCALE: 1"= 50' PRIOR INST.: DV 1394/80