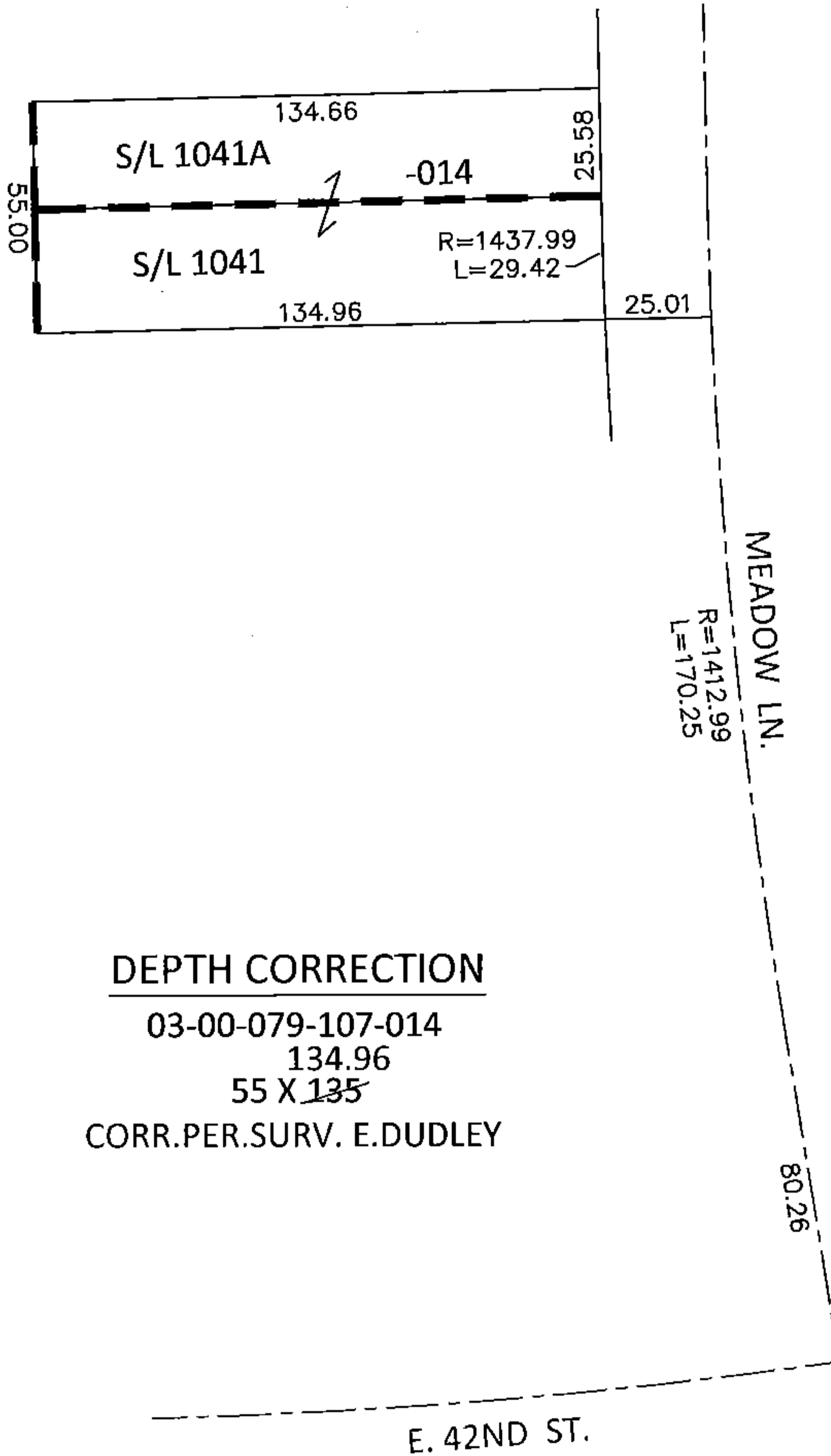
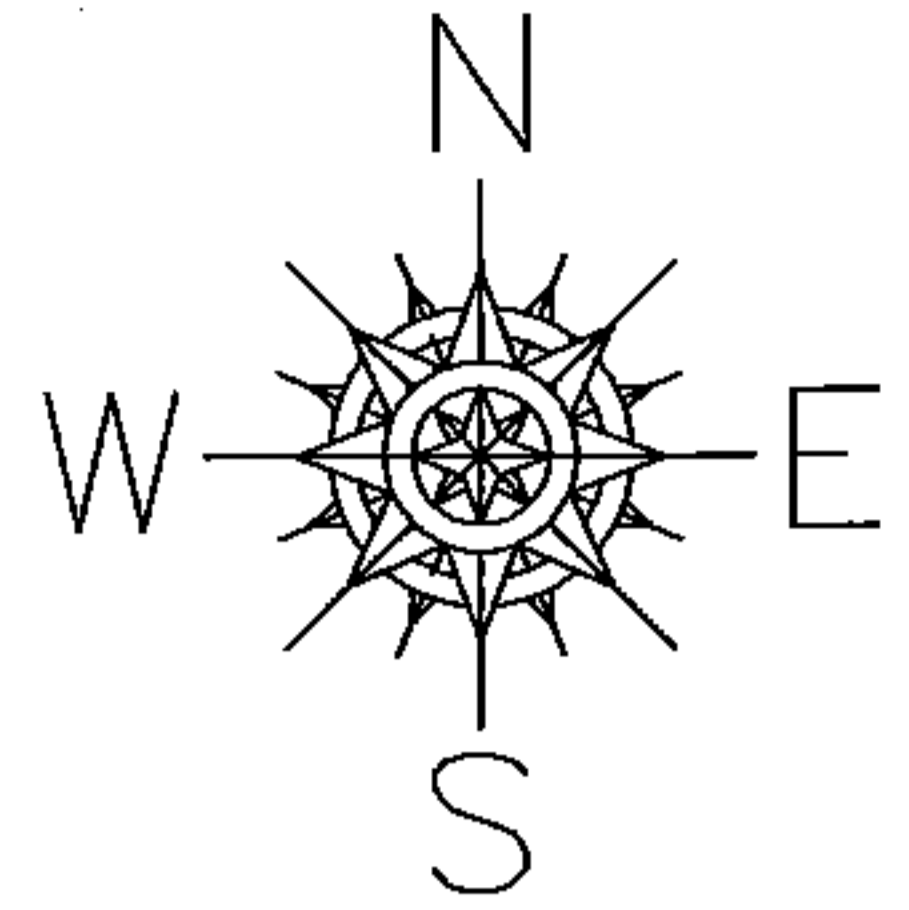


PARENT PARCEL: 03-00-079-107-014

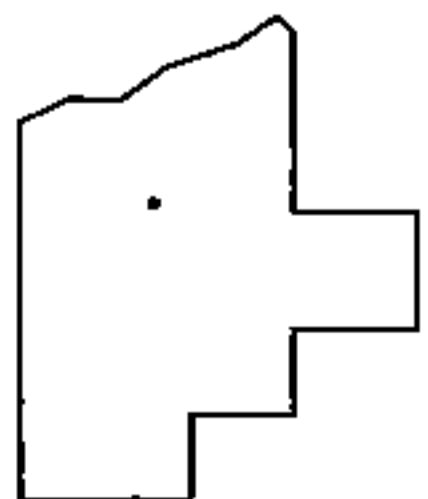
CHILD PARCEL:

STARTING POINT: INTERSECTION OF C/L OF 42ND ST. AND C/L OF MEADOW LN.

15-03160-A



DEPTH CORRECTION
 03-00-079-107-014
 134.96
 55 X ~~135~~
 CORR.PER.SURV. E.DUDLEY



SPLITS/DEEDS PROCESSED
 LORAIN COUNTY TAX MAP DEPARTMENT
 226 MIDDLE AVE. ELYRIA, OHIO

SURVEYED BY: EDWARD B. DUDLEY III
 CLOSURE: .01:10,000
 MAP PAGE(S): 3-00-079
 APPROVED BY: RRM DATE: 4-30-15
 SCALE: 1"= 50' PRIOR INST.: DV XXXX/XXX