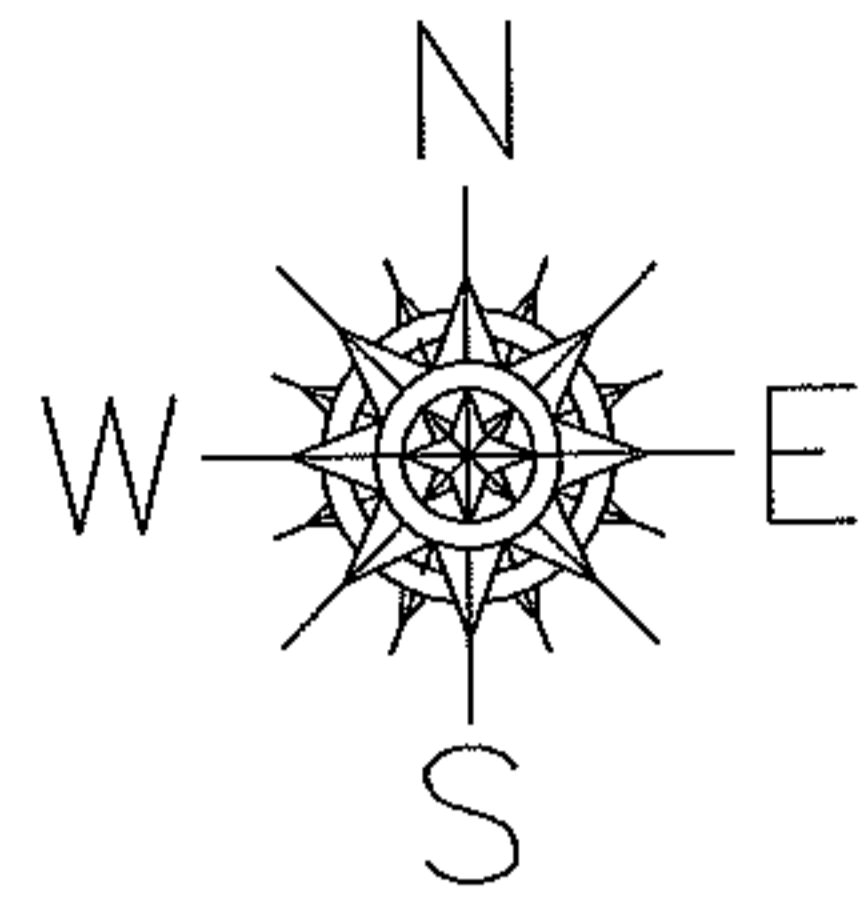


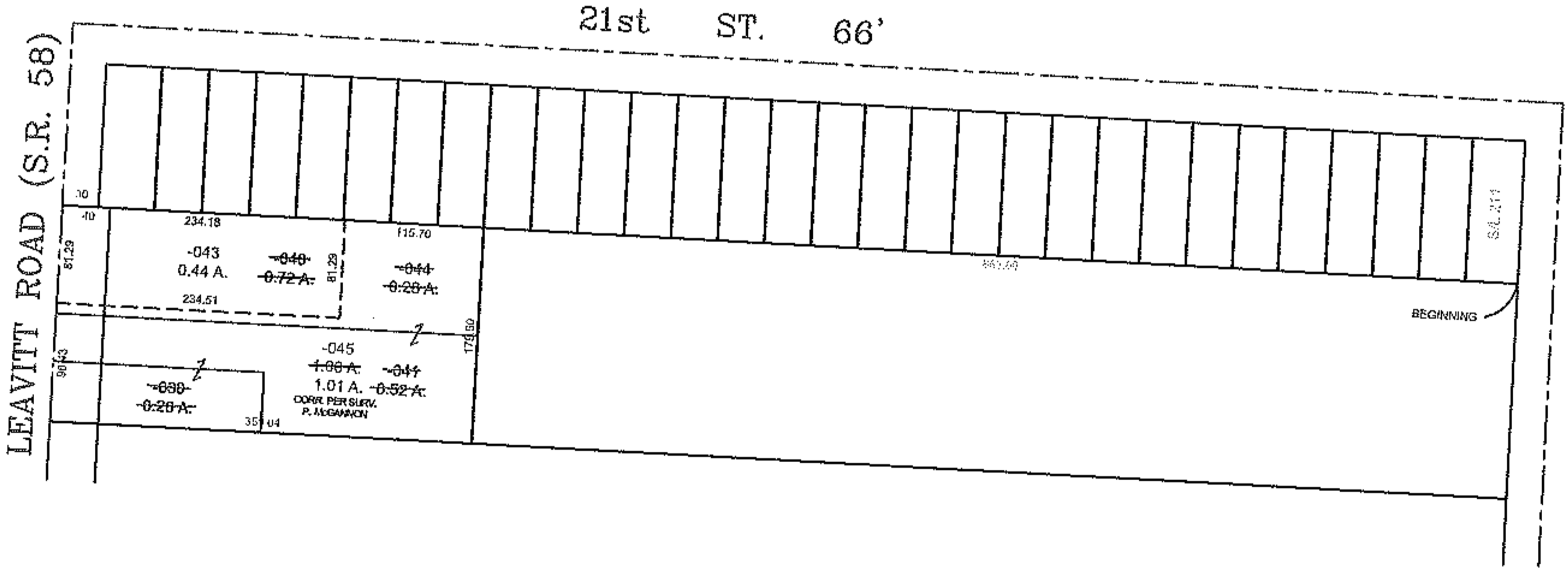
PARENT PARCEL: 02-02-024-113-030, -040, & -041
 CHILD PARCEL: 02-02-024-113-043 THRU -045
 STARTING POINT: S.E. CORNER OF S/L 211 IN POLE & REEVES CITY ACRES

13-03155

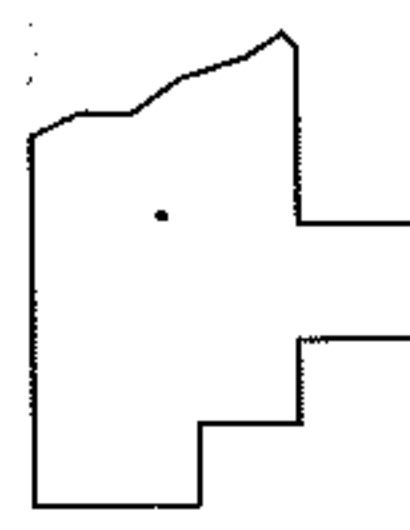


SPLIT
~~02-02-024-113-040~~
~~0.72 A.~~
 02-02-024-113-043
 0.44 A.
REMAINDER
 02-02-024-113-044
 0.28 A.

COMBINATION
~~02-02-024-113-030~~
~~0.20 A.~~
~~02-02-024-113-041~~
~~0.52 A.~~
~~02-02-024-113-044~~
~~0.28 A.~~
 02-02-024-113-045
 1.00 A.
 1.01 A.
 CORR. PER SURV.
 P. McGANNON



PRIOR INST.: ?????
 PRIOR INST.: 20090293077



SPLITS/DEEDS PROCESSED
 LORAIN COUNTY TAX MAP DEPARTMENT
 226 MIDDLE AVE. ELYRIA, OHIO

SURVEYED BY: PATRICK A. McGANNON
 CLOSURE: 0.01 : 10,000
 MAP PAGE(S): 2-02-024-A
 APPROVED BY: TJS DATE: 6/10/13
 SCALE: 1"= 200